

THE STELLAR CONTENT OF THE SOUTHERN TAIL OF NGC 4038/4039 AND A REVISED DISTANCE¹

IVO SAVIANE

European Southern Observatory, 3107 Alonso de Cordova, Vitacura, Casilla 19001, Santiago 19, Chile; and Department of Physics and Astronomy, Math-Sciences 8979, UCLA, Los Angeles, CA 90095-1562; isaviane@eso.org

J. E. HIBBARD

National Radio Astronomy Observatory, 520 Edgemont Road, Charlottesville, VA 22903; jhibbard@nrao.edu

AND

R. MICHAEL RICH

Department of Physics and Astronomy, UCLA, Math-Sciences 8979, Los Angeles, CA 90095-1562; rmr@astro.ucla.edu

Received 2002 August 12; accepted 2003 October 29

ABSTRACT

We have used the *Hubble Space Telescope* and Wide Field Planetary Camera 2 to image the putative tidal dwarf galaxy located at the tip of the Southern tidal tail of NGC 4038/4039, the Antennae. We resolve individual stars and identify two stellar populations. Hundreds of massive stars are present, concentrated into tight OB associations on scales of 200 pc, with ages ranging from 2 to 100 Myr. An older stellar population is distributed roughly following the outer contours of the neutral hydrogen in the tidal tail; we associate these stars with material ejected from the outer disks of the two spirals. The older stellar population has a red giant branch tip at $I = 26.5 \pm 0.2$ from which we derive a distance modulus $(m - M)_0 = 30.7 \pm 0.25$. The implied distance of 13.8 ± 1.7 Mpc is significantly smaller than commonly quoted distances for NGC 4038/4039. In contrast to the previously studied core of the merger, we find no super-star clusters (SSCs). One might conclude that SSCs require the higher pressures found in the central regions in order to form, while spontaneous star formation in the tail produces the kind of OB star associations seen in dwarf irregular galaxies. The youngest population in the putative tidal dwarf has a total stellar mass of $\approx 2 \times 10^5 M_\odot$, while the old population has a stellar mass of $\approx 7 \times 10^7 M_\odot$. If our smaller distance modulus is correct, it has far-reaching consequences for this prototypical merger. Specifically, the luminous to dynamical mass limits for the tidal dwarf candidates are significantly less than 1, the central SSCs have sizes typical of Galactic globular clusters, rather than being 1.5 times as large, and the unusually luminous X-ray population becomes both less luminous and less populous.

Key words: galaxies: distances and redshifts — galaxies: individual (NGC 4038, NGC 4039) — galaxies: interactions — galaxies: peculiar — galaxies: stellar content

On-line material: machine-readable table

1. INTRODUCTION

Interactions and mergers of galaxies are becoming increasingly recognized as representing perhaps the most important physical process affecting galaxy evolution. In the context of hierarchical clustering models of galaxy formation, luminous galaxies such as the Milky Way could have been formed as the product of early mergers of less massive galaxies (Kauffmann & White 1993). Considering the crucial role that galaxy merging plays in the evolution of massive galaxies in cold dark matter (CDM) cosmology, it is important to consider also the derivative effects that this merger activity has on the evolution of galaxy populations.

Since the pioneering work of Toomre & Toomre (1972) it has been known that dramatic tidal tails are among the most striking signs of a merger in progress. It has been suggested that the material in tidal tails might detach from the parent galaxies and collapse into gravitationally bound clumps, leading to independent objects (so-called tidal dwarf galaxies, or TDGs) that might form new stars and be later recognized as

dwarf galaxies (Zwicky 1956; Schweizer 1978, hereafter S78; Barnes & Hernquist 1992; Duc et al. 1997; Duc & Mirabel 1998). This process could be more significant at high redshift, where the merger rate is dramatically higher.

One of the best cases for a TDG actually in the process of formation is near the end of the long, curving southern tidal tail of the well-known nearby merging system NGC 4038/4039, “the Antennae.” Schweizer (1978) was the first to discuss the tip of the southern tail in some detail. Making use of stacked photographic images obtained using the Cerro Tololo Inter-American Observatory (CTIO) 4 m telescope (reproduced in Fig. 1), Schweizer noted the presence of a low surface brightness object ($V > 25$ mag arcsec⁻²) slightly *beyond* the end of the tail (*indicated by an arrow*, Fig. 1, *right*). He noted that at the adopted distance of ~ 28 Mpc, this feature would have an absolute magnitude $M_V \simeq -16.5$ making it roughly twice as luminous as the local group dwarf irregular galaxy IC 1613. Furthermore, the then-current WSRT H I maps of this system by van der Hulst (1979) showed a strong concentration of atomic gas coincident with this extension, and Schweizer hypothesized that it was a distinct dwarf stellar system, possibly created during the interaction as envisioned by Zwicky (1956).

Besides this possible TDG, S78 observed star formation taking place *within* the tip of the tail (*indicated by an arrow*, Fig. 1, *left*). This region of the tail was subsequently studied

¹ Based on observations with the NASA/ESA *Hubble Space Telescope*, obtained at the Space Telescope Science Institute, which is operated by the Association of Universities for Research in Astronomy, Inc., under NASA contract NAS 5-26555. These observations were made in connection with proposal GO-6669.

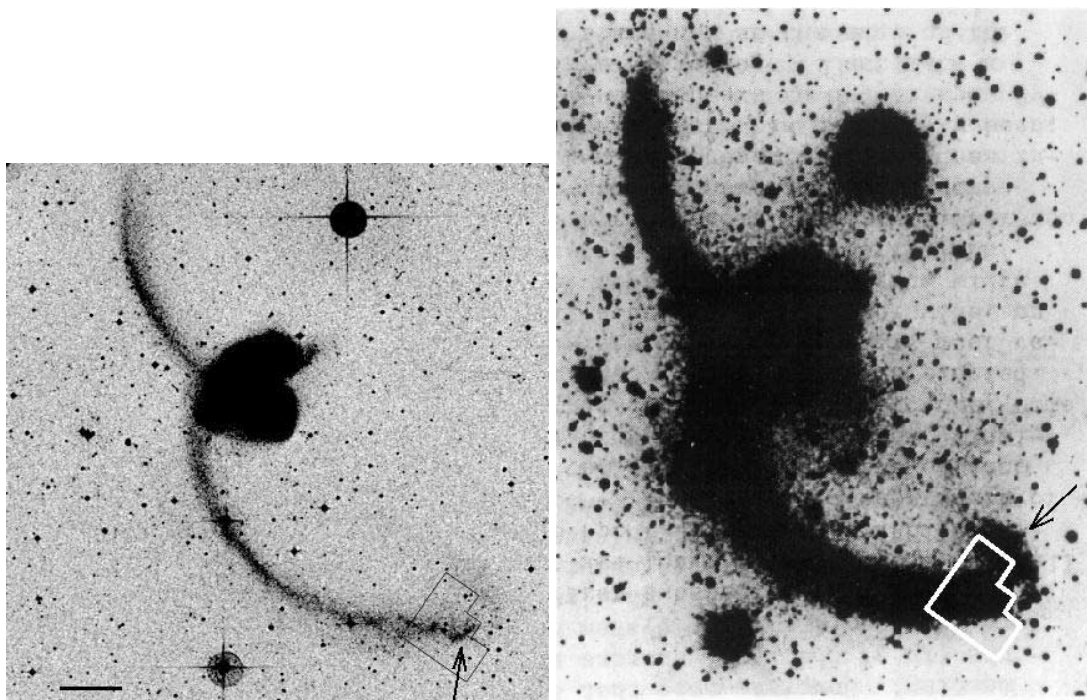


FIG. 1.—*Left*: Position of the WFPC2 field represented by the black outline over a reproduction from the DSS field (north is up, and east to the left). The bar at the lower left of the figure is $2'$, and the WFPC2 field is $\sim 10'$ southwest from the nuclei of the two galaxies. NGC 4038 is the northern object (plus the southern tidal tail), and NGC 4039 is the southern one (plus the northern tidal tail). The arrow points to the object identified by MDL92 as a TDG. *Right*: Reproduction of the CTIO plate in Schweizer (1978), where the arrow points to the low surface brightness object he identified as a candidate TDG beyond the tip of the tail. The white outline represents the WFPC2 field.

by Mirabel et al. (1992; hereafter MDL92). MDL92 described a chain of H II regions delineating a twisting stellar bar embedded in an envelope of diffuse optical emission. Optical spectroscopy of three of the H II regions (denoted as regions I, II, and III by MDL92) showed them to be ionized by stars as young as 2 Myr (region I) and 6 Myr (regions II and III) and to have an oxygen abundance of $12 + \log(\text{O}/\text{H}) = 8.4$ (i.e., $\simeq \frac{1}{3}$ solar). The total luminosity of the three H II regions was found to be $\sum L(\text{H}\alpha) = 3.9 \times 10^{39}$ ergs s^{-1} , and the apparent magnitude of the entire region is $V = 17.3 \pm 0.3$, corresponding to $M_V = -15.5$ (all values referenced to their assumed distance of 33.2 Mpc, i.e., $m - M = 32.6$). These properties, along with the atomic gas mass of $M(\text{H I}) = 10^9 M_\odot$ and derived dynamical mass of $8.3 \times 10^9 M_\odot$, are similar to those of dwarf irregular galaxies, and MDL92 concluded that this region was in fact a dwarf irregular galaxy forming out of the tidal debris.

More recent radio observations have mapped the total extent of the H I within the tidal tails (Gordon et al. 2001; Hibbard et al. 2001). These observations show that, while the density of the atomic gas is enhanced in the vicinity of the putative TDGs identified by S78 and MDL92, the entire tail is a continuous gas-rich structure. The gas kinematics suggest that the tail bends back along our line of sight just in the vicinity of the TDG candidates, giving rise to the appearance of a distinct clump of gas associated with the putative tidal dwarfs. No clear kinematic signature of a self-gravitating entity of the mass suggested by MDL92 was seen, but the geometric velocity gradients caused by the tail bending away from our line of sight may mask the kinematic signature of smaller self-gravitating condensations (Hibbard et al. 2001). Even though the dynamical nature of the TDG candidates is still in question, the H I observations show that the atomic gas

in the vicinity of star-forming regions I, II, and III of MDL92 is denser than anywhere else in the system.

To study further the star-forming regions identified by S78 and studied by MDL92 and to examine the distribution and ages of the underlying old and young stellar populations of the TDG candidate identified by MDL92, we targeted this region for broadband *UBVI* observations with Wide Field and Planetary Camera 2 (WFPC2) on board the *Hubble Space Telescope (HST)*. Figure 1 illustrates the location of our single WFPC2 field relative to NGC 4038/4039. In addition to investigating the population of a TDG candidate, these observations also afford us the chance to investigate star formation taking place in an environment relatively isolated from the large-scale structure of a disk in the far outskirts of a galactic potential well. We stress that a study of the S78 object with the recently installed ACS would be valuable as well, as the population of this object may well sample some of the original disk population of NGC 4038 and, in addition, give an improved red giant branch (RGB) tip distance test of our proposed short modulus.

A color image of the *HST* mosaic is shown in Figure 2, and a visual inspection of the image gives a clear impression of the population even without the formality of a color-magnitude diagram (CMD). The light of the tidal tail region imaged is dominated by bright blue stars indicative of a young stellar population (which contrast strongly with the reddish background galaxies). Fainter and redder stars indicative of an older population can also be seen. The youngest and brightest blue stars are located along a barlike structure that extends from the two bright foreground stars in the upper right corner of the WF3, crosses the upper left corner of the WF4, and ends in the lower right corner of the PC. These stars form groups that look like OB associations, and the three most prominent

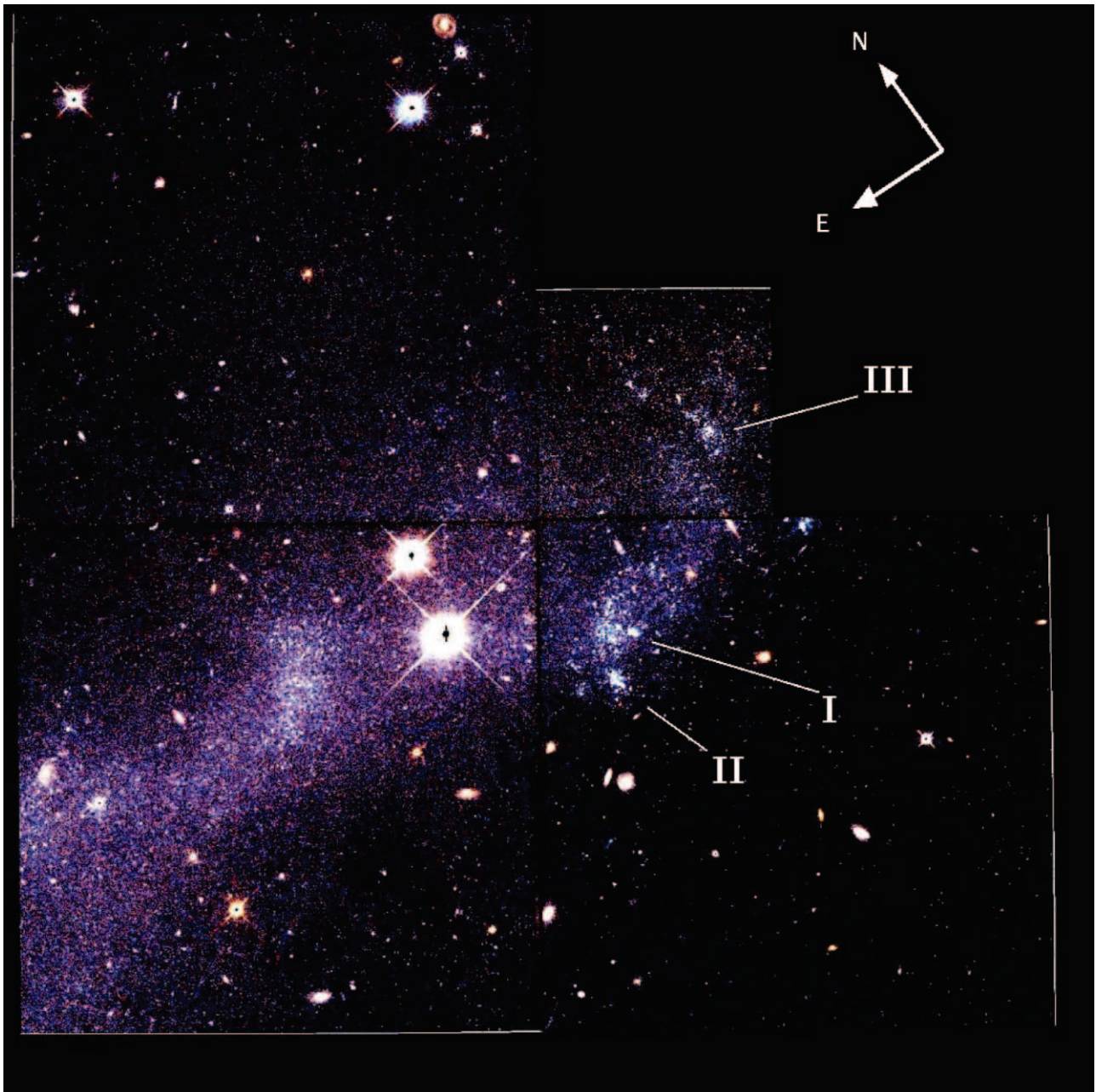


FIG. 2.—True-color image of our *HST* field, where red has been assigned to the F814W image, blue to the F555W, and green to an image made from a combination of both filters. The extent and orientation of the field is outlined in Fig. 1. The three star formation regions studied by Mirabel et al. (1992) are marked along the barlike structure that extends westward from the two bright stars.

ones coincide with the location of the three H II regions studied by MDL92. Following that study, we refer to these regions as regions I, II, III, and we have labeled them as such in Figure 2. Besides these active sites of star formation, another concentration of young stars can be seen in the WF3 chip, east of the two foreground stars.

The paper is organized as follows. The data reduction and calibration are presented in § 2, and the resulting CMD is used in § 3 to find the distance to the Antennae. We interpret the CMD with the aid of that of NGC 625 (a star-forming dwarf irregular galaxy) and theoretical isochrones, and the distance modulus is then found using the luminosity of the tip of the RGB of the old population. The stellar content of the NGC 4038 tail is discussed in § 4, and, in particular, we discuss the spatial distribution of populations as a function of age in

§ 4.1. A number of stellar associations are defined, and their morphology is compared with the central star clusters in § 4.2. Their CMD is interpreted in § 4.3, and an estimate of the mass in young and old stars is obtained in § 4.4 (plus Appendix B) and § 4.5, respectively. To interpret the luminosity function of the young population, a model of constant and continuous star formation is developed in Appendix B3, and the luminosity function of the old population is compared with that of a Virgo dwarf elliptical in Appendix A. Our conclusions are given in § 5.

2. OBSERVATIONS, REDUCTIONS, AND CALIBRATIONS

The field centered at $(\alpha, \delta, \text{epoch}) = (12^{\text{h}}01^{\text{m}}25^{\text{s}}.6, -19^{\circ}00'31''.9; \text{J2000.0})$ was imaged on 1998 November 23 and 24 and 1999

January 4 and 5. The outline of the *HST* WFPC2 field of view is indicated on a Digital Sky Survey (DSS) image of NGC 4038/4039 in Figure 1. Four filters were employed, for a total observing time of 1.4 hr in F336W, 0.7 hr in F450W, 2.1 hr in F555W, and 2.9 hr in F814W. The exposure times for the two shortest-wavelength filters were not long enough to allow the detection of stars, so our emphasis will be on the F555W and F814W frames.

2.1. Reductions

Our procedures for data reduction and calibration are based on the DAOPHOT II/ALLFRAME package (Stetson 1987, 1994). The procedures have been thoroughly described in Piotto et al. (2002) and Saviane et al. (2003), so only the general scheme is recalled here, which involves (1) image preprocessing, (2) profile-fitting photometry within a small radius, (3) correction for time-dependent charge-transfer efficiency (CTE), (4) growth-curve analysis and correction to total magnitudes, (5) calibration to the standard system, and, finally, (6) astrometry.

The images are prepared for the photometry by masking out vignetted pixels and bad pixels and columns. The coordinates of detected sources are measured from a master frame, combining all of the images in all filters. These positions are used by ALLFRAME, which performs the photometry by fitting a point-spread function (PSF) simultaneously to all stars of the individual frames. Since there are not sufficiently bright and isolated stars in any of the four chips, we are not able to construct the PSFs. Instead, we use the models extracted by P. B. Stetson (2003, private communication) from a large set of uncrowded and unsaturated *HST* WFPC2 images. The resulting F555W and F814W magnitude lists are combined to create a raw color-magnitude diagram (CMD).

2.2. Calibration

In the next step the photometry is calibrated to the standard system, following Dolphin (2000, hereafter D00) and assuming an average reddening in front of NGC 4038/4039 of $E_{B-V} = 0.046$ (Schlegel et al. 1998). This procedure accounts for both the time/counts dependence of the CTE and the variation of the effective pixel area across the WFPC2 field of view, and it yields final calibrated magnitudes in the Johnson-Kron-Cousins and the *HST* photometric systems.

The aperture corrections (to the reference aperture of $0''.5$ of Holtzman et al. 1995) could not be computed in the usual way since we lacked the necessary bright isolated objects. Thus, we followed an approach closely resembling that of Ibata et al. (1999). Artificial images were created using the IRAF/MKNOISE task, which reproduced the observed background+noise of our reference scientific frames (one frame per filter and per WFPC2 chip). On this background, the DAOPHOT/ADD routine was used to add a number of stars spanning an instrumental magnitude range from 14–20, making use of the available PSFs. For the details of this process, see Saviane et al. (2000). These artificial images were used, finally, to compute the aperture corrections, with uncertainties of ± 0.05 mag.

The J2000.0 positions of our objects were found through the METRIC task in the IRAF/STSDAS package. After processing, the world coordinates were appended to the photometry, and, finally, a single catalog was obtained by merging the four chip measurements. This catalog forms the basis of our discussion of the stellar content of this region of

NGC 4038. We estimate a total systematic error of ± 0.05 mag, dominated by the uncertainty on the aperture corrections.

2.3. Characterization of the Photometry

Figure 3 shows the resulting photometric errors as returned by ALLFRAME for both filters and for each of the WFPC2 chips. One can immediately see that most of the stars are fainter than the 24th magnitude and that below F555W = 28, or F814 = 27, the incompleteness of the data starts to be severe. The typical trend of rising errors with magnitude can be seen (with smaller scatter in the PC and WF4 CCDs), and most of the stars in the field are affected by errors of a few 0.1 mag. The solid lines represent the expected photometric error based on the signal-to-noise ratio (S/N) predicted by the WFPC2 exposure-time calculator for the WF chips and an A0 star, within our DAOPHOT fitting radius of 2 pixels. The observed errors are (on average) 10% smaller than expected for F555W and circa 20% larger than expected for F814W. A few lines of the final photometric catalog are reported in Table 1, where the columns contain, from left to right, an identifier (ID), the J2000.0 equatorial coordinates (R.A. and decl.), the true Johnson and ST magnitudes (V_0 and F555W₀), the ALLFRAME photometric error on the ST mag (ϵ_{F555W}), the true Johnson-Cousins and ST colors [$(V-I)_0$ and C_0^{HST}], the photometric error on the ST color (ϵ_{CHST}), and the WFPC2 chip number (No.).

2.4. Comparison with Ground-based Photometry

The zero point of our V photometry was checked against the ground-based imaging of Hibbard et al. (2001). There are only five stars that are not saturated in the WFPC2 frames and are bright enough to be measurable on the ground-based frames. Total magnitudes were then found within an aperture of $13''$, which was chosen after a growth-curve analysis (the seeing was $1''.8$ FWHM). The average difference is $\langle V_{HST} - V_{ground} \rangle = 0.09 \pm 0.15$ for the five stars. Using only the three stars with

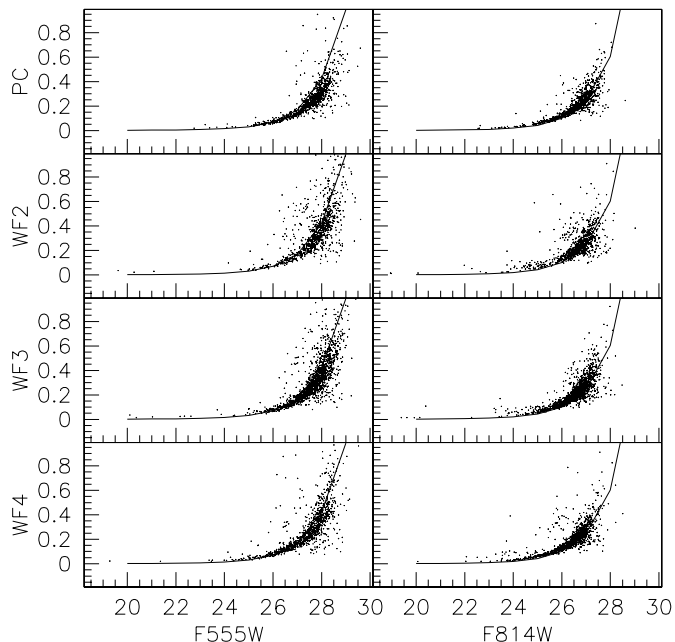


FIG. 3.—ALLFRAME internal photometric errors. Absolute errors (in magnitudes) for the two filters are plotted in the left (F555W filter) and right (F814W filter) columns vs. the apparent magnitude. The solid curves represent the expected error based on the WFPC2 exposure time calculator.

TABLE 1
PHOTOMETRY OF INDIVIDUAL STARS

ID	R.A.	Decl.	V_0	F555W ₀	ϵ_{F555W}	$(V-I)_0$	C_0^{HST}	$\epsilon_{C^{\text{HST}}}$	No.
1.....	12 01 28.625	-18 59 06.43	18.219	18.244	0.021	0.880	0.870	0.027	2
2.....	12 01 25.333	-19 01 34.86	19.277	19.302	0.023	1.102	1.089	0.027	4
3.....	12 01 25.106	-18 59 33.80	19.617	19.639	0.035	0.675	0.667	0.039	2
4.....	12 01 32.635	-19 00 32.12	20.102	20.126	0.035	0.717	0.709	0.037	3
5.....	12 01 25.439	-18 59 44.37	20.276	20.298	0.023	1.306	1.290	0.026	2
6.....	12 01 32.127	-19 00 56.46	20.372	20.298	0.015	2.875	2.830	0.141	3
7.....	12 01 28.752	-19 00 41.55	21.036	21.058	0.020	0.639	0.632	0.110	3
8.....	12 01 29.779	-19 00 08.29	21.092	21.117	0.029	1.017	1.004	0.034	2
9.....	12 01 27.784	-19 01 30.55	21.360	21.382	0.020	1.290	1.274	0.027	4
10.....	12 01 32.175	-19 00 46.49	22.170	22.151	0.023	2.248	2.215	0.027	3
11.....	12 01 30.112	-19 01 20.58	22.355	22.338	0.026	2.210	2.178	0.030	3
12.....	12 01 29.672	-19 00 53.06	22.617	22.530	0.026	3.000	2.953	0.030	3
13.....	12 01 25.546	-19 00 18.67	22.747	22.756	0.019	0.198	0.196	0.026	1
14.....	12 01 25.275	-19 00 39.61	23.209	23.230	0.048	0.569	0.563	0.063	1
15.....	12 01 25.086	-19 00 58.72	23.367	23.380	0.029	0.311	0.307	0.035	4
16.....	12 01 24.941	-19 00 41.77	23.392	23.416	0.021	0.797	0.788	0.028	1
17.....	12 01 27.231	-19 00 55.47	23.462	23.468	0.020	0.132	0.131	0.032	4
18.....	12 01 28.399	-19 01 23.96	23.505	23.529	0.029	0.832	0.823	0.035	4
19.....	12 01 25.583	-19 00 29.44	23.686	23.699	0.027	0.293	0.290	0.035	1

NOTES.—Table 1 is presented in its entirety in the electronic edition of the *Astronomical Journal*. A portion is shown here for guidance regarding its form and content. Units of right ascension are hours, minutes, and seconds, and units of declination are degrees, arcminutes, and arcseconds. The coordinates are J2000.0, $C_0^{\text{HST}} = (F555W - F814W)_0$, and “No.” is the WFPC2 chip number, with 1 = PC, 2 = WF2, etc.

more regular growth curves, we find $\langle V_{\text{HST}} - V_{\text{ground}} \rangle = 0.01 \pm 0.11$. The two magnitude scales are then consistent within the mutual errors (0.02 mag for the ground-based photometry, see Hibbard et al. 2001).

We cannot make a similar test in I band, since no suitable ground-based photometry exists. However, since the D00 recipe for the calibration has no free parameters, we believe that the HST zero point for the I band is as reliable as that for the V band. Note that the same methods have given a good calibration of WFPC2 I photometry for each of seven globular clusters of the Large Magellanic Cloud (Saviane et al. 2003).

2.5. NGC 625

To constrain the distance to our field in the Antennae, we compare our CMD with that of a well-understood nearby galaxy with a similar stellar population for which deeper photometry and a well-measured CMD are available (see § 3). Toward this end, we retrieved WFPC2 imaging of the dwarf irregular galaxy NGC 625 from the HST archive (Proposal ID: GO 8708; PI: E. Skillman), and V, I photometry was obtained following the methods described above and adopting $E_{B-V} = 0.016$ (Schlegel et al. 1998). The data consist of 4×1300 s exposures in F555W and 8×1300 s exposures in F814W and thus reach limiting magnitudes comparable to those reached for NGC 4038/4039.

3. THE DISTANCE TO NGC 4038/4039

To estimate the distance to NGC 4038/4039, we need to understand the CMD of the NGC 4038 tail in terms of stellar evolutionary phases and thus assign absolute luminosities to its stellar populations. As we see in Figure 3, the CMD is heavily affected by photometric errors, so its interpretation is not straightforward. For this reason, we decided to compare it with that of NGC 625. This is a star-forming dwarf irregular galaxy in the Sculptor group, whose members have distance moduli in the range 26–28 (e.g., Jerjen, Freeman, & Binggeli 1998). Thus, it should have a stellar population comparable to

our region, and we expect to see much better the various sequences, since its distance modulus is ~ 4 mag smaller and the exposure times are almost the same.

3.1. Interpreting the CMD of the NGC 4038 Tail

Figure 4 presents the color-magnitude diagrams constructed for each of the four WFPC2 chips. The bright blue and red stars seen in the CMDs belong to the tail’s youngest populations (see § 4.1 below and Fig. 7). There is also a rise in star counts below $I_0 \sim 26$, which could be due either to the RGB

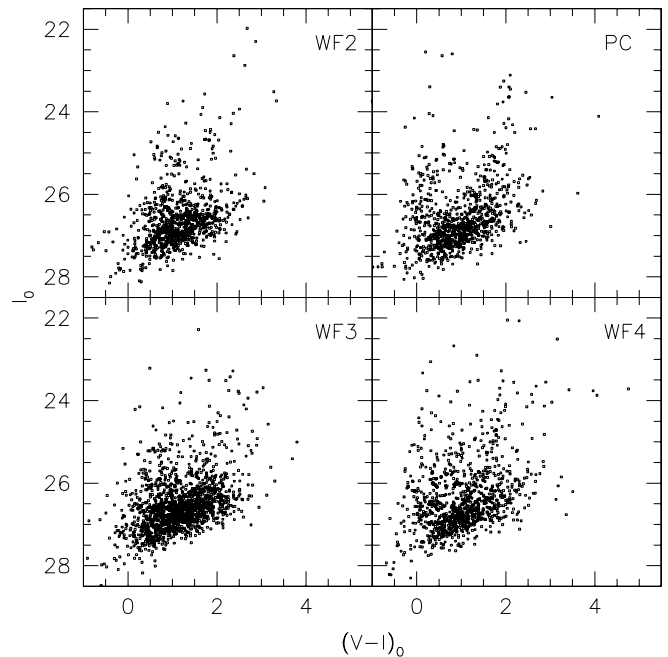


FIG. 4.—Color magnitude diagram of each of the four WFPC2 chips, according to the labels in the top right corners. True $V-I$ colors and I magnitudes are displayed along the abscissae and ordinates, respectively.

tip, or to the upper envelope of the asymptotic giant branch (AGB), almost 1 mag brighter. The RGB of the oldest populations is typically the most conspicuous bright red feature of the CMD of a dwarf irregular galaxy (see, e.g., Nikolaev & Weinberg 2000). The AGB shares the color location of the RGB, extending to brighter luminosities, but it is a shorter lived evolutionary phase and hence less populated. As is well known (e.g., Da Costa 1998), the luminosity of the RGB tip is almost independent of age and metallicity for ages greater than 2 Gyr and for metallicities $0.0004 \leq Z \leq 0.004$. This produces a characteristic discontinuity in the luminosity function that is used as a standard candle (see, e.g., Da Costa 1998 and Carretta et al. 2000). In the quoted metallicity range we can assume a tip luminosity $M_I^{\text{tip}} = -4.2 \pm 0.25$.

To understand whether the bright red stars of the NGC 4038 tail belong to the RGB or the AGB, we search for the best match between the luminosity function (LF) of the old population of our region and that of the old population of NGC 625. However, we cannot work with the original CMDs because (1) the RGB/AGB of the old population is polluted by the RGB of the young population, and (2) the photometric errors in our CMD are much larger than those in NGC 625 at

comparable *absolute* luminosities. Thus, even if the underlying theoretical LFs were the same, the RGB tip discontinuity for the NGC 4038 tail would be less pronounced than that of NGC 625, and a good match could never be made (see Madore & Freedman 1995 for a thorough discussion of the shape of the RGB LF versus photometric error and AGB contamination).

To overcome the first difficulty, we attempt to isolate the CMD of the old population by selecting stars far from star formation regions. In the case of NGC 625 this means selecting the southern 35'' of the WF2 chip. For the NGC 4038 tail we selected stars in areas away from the star-forming regions described in § 1. The resulting isolated CMD for the NGC 4038 tail is given in the leftmost panel of Figure 5.

To address the second difficulty, the errors of the NGC 625 photometry were increased to match those of the NGC 4038 tail photometry, and then the number of stars was reduced by a factor r to match the number of stars in the brightest part of the NGC 4038 tail CMD. Thus, we added random errors of $\sigma_V = 0.35$ to the V photometry and $\sigma_I = 0.25$ to the I photometry of NGC 625, to match the errors on the NGC 4038 photometry at $I_0 \approx 26$. The resulting degraded CMD for NGC

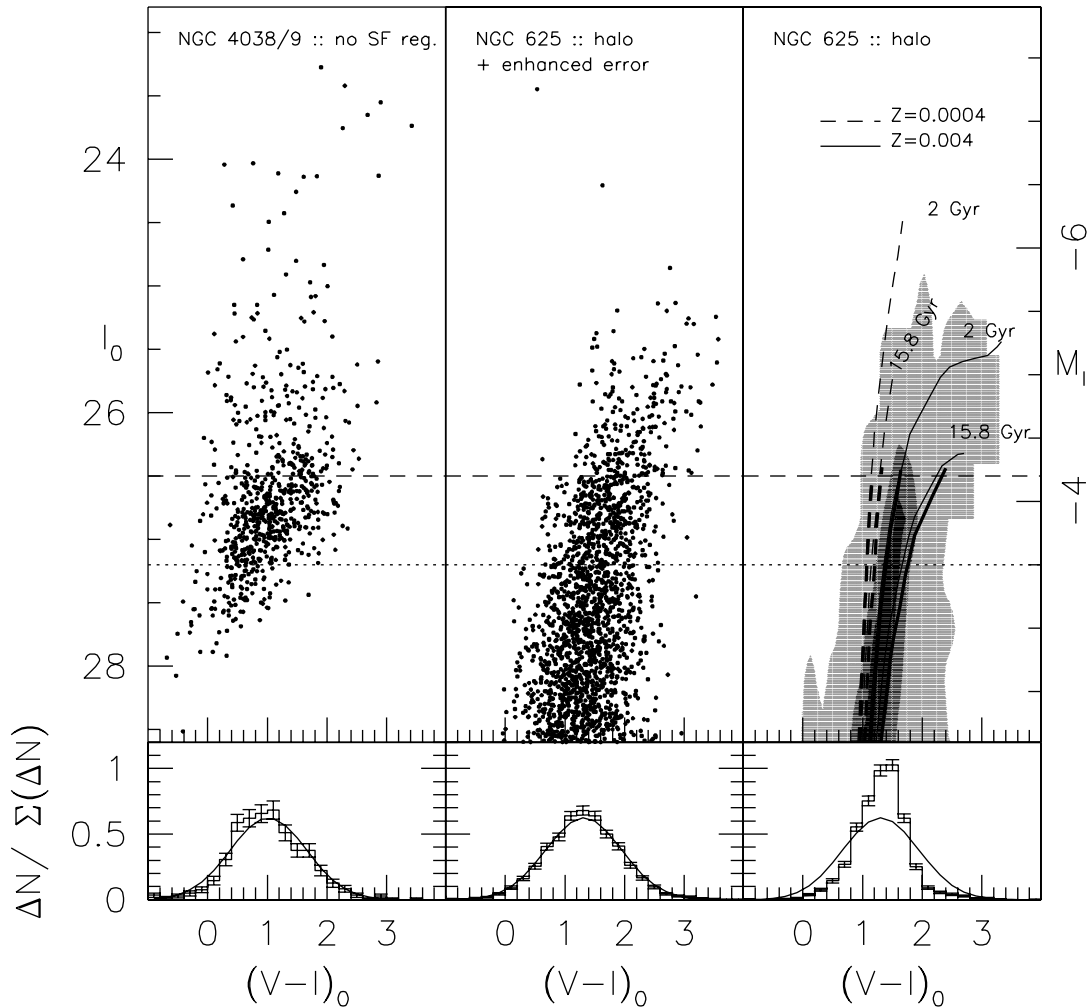


FIG. 5.—*Left and right*: CMDs of the NGC 4038 tail and NGC 625, after selecting stars far from the star formation regions and adopting the distance moduli described in the text [$(m - M)_0 = 28.1$ mag for NGC 625 and 30.7 mag for NGC 4038/4039]. *Middle*: CMD of NGC 625, after enhancing the photometric error. A set of isochrones from Girardi et al (2000) is overplotted to the NGC 625 diagram in the right panel, in order to illustrate the RGB (*heavy lines*) and AGB evolutionary phases. A gray-scale plot has been adopted for this CMD (three levels, from 1 to 130 in steps of 43 counts), to better visualize the theoretical loci. In each panel the dashed line marks the average luminosity of the RGB tip, $M_I = -4.2$. *Bottom*: For each CMD, the histogram of the color distribution, for stars brighter than $M_I = -3.5$ (*dotted line*). A Gaussian of $\sigma_{V-I} = 0.64$ is plotted over each histogram.

625 is given in the middle panel of Figure 5. The bottom panels of this figure show histograms of the color distribution for stars brighter than $M_I = -3.5$ (dotted line), to show that the photometrically degraded NGC 625 data have a similar spread in color as the NGC 4038 tail data.

Next, the two CMDs were compared for a range in the difference of distance moduli and for a range in r , until the best match was found. The match was decided on the basis of a Kolmogorov-Smirnov (K-S) test on the two cumulated M_I vectors, in the range $-5.0 \leq M_I \leq -4.0$. For the comparison, the Whitmore et al. (1999; hereafter W99) distance modulus was adopted as a first guess for the distance of the Antennae. With this procedure, we derive a best fit of $r = 2.4$ and a distance modulus difference of 2.6 mag. More importantly, the best fit is achieved when the discontinuity in the NGC 4038 tail LF coincides with the RGB tip of the NGC 625 old population. From the absolute magnitude of the RGB tip we then find a distance modulus $(m - M)_0 = 30.7 \pm 0.25$ for the Antennae, and in turn $(m - M)_0 = 28.1 \pm 0.25$ for NGC 625. The error is dominated by the uncertainty on the RGB tip luminosity (which could be reduced if we knew the metallicity of the old populations of the two galaxies). Instead, if we changed the difference in the two distance moduli by only ± 0.08 mag, the probability of the coincidence as measured by the K-S test would drop already below 90%.

Figure 5 shows the isolated CMD of NGC 625 shifted so as to produce the best match to that of NGC 4038. The rightmost panel shows a gray-scale representation of the original CMD of NGC 625 halo plus some representative isochrones from Girardi et al. (2000).

The loci of the evolved RGB for two ages and two metallicities are drawn with heavy lines, while those for the AGB are drawn with thin lines. Furthermore, dashed and solid lines distinguish the two metallicities. The isochrones illustrate several evolutionary features mentioned above: specifically, that the luminosity of the RGB tip is almost independent of age and metallicity for ages greater than 2 Gyr and for metallicities $0.0004 \leq Z \leq 0.004$; that the AGB shares the color location of the RGB but has a brighter termination and extends more to the red for more metal-rich populations; and most importantly that there is a sharp rise in star counts below $M_I \sim -4.2$ due to the more densely populated RGB.

The close match between the two CMDs is confirmed in Figure 6, where we display the two LFs and the result obtained with the convolution with a Sobel edge detector (see Lee, Freedman, & Madore 1993). We see the coincidence of both the main and secondary peaks of the two curves, where the higher maximum corresponds to the RGB tip, and the lower maximum corresponds to the upper envelope of the AGB. The bottom panel of the figure confirms the coincidence in a quantitative way: the probability that the two distributions in M_I share a common parent is 91.8%. Based on this experiment, we thus conclude that NGC 4038/4039 is at a distance of 13.8 ± 1.7 Mpc.

The Antennae is not the most distant system for which a distance based on the RGB tip has been attempted. Harris et al. (1998) used this method to find the distance of a dwarf elliptical galaxy of the Virgo cluster (at ~ 16 Mpc). To obtain the deepest possible LF, Harris et al. imaged the galaxy with the *HST* only in the *I* filter. Thus, it is not possible to carry out a detailed comparison of the CMDs, as we did for NGC 625. On the other hand, the photometry of Harris et al. has photometric errors comparable to ours, permitting us to compare the two without any photometric manipulation. In Appendix A

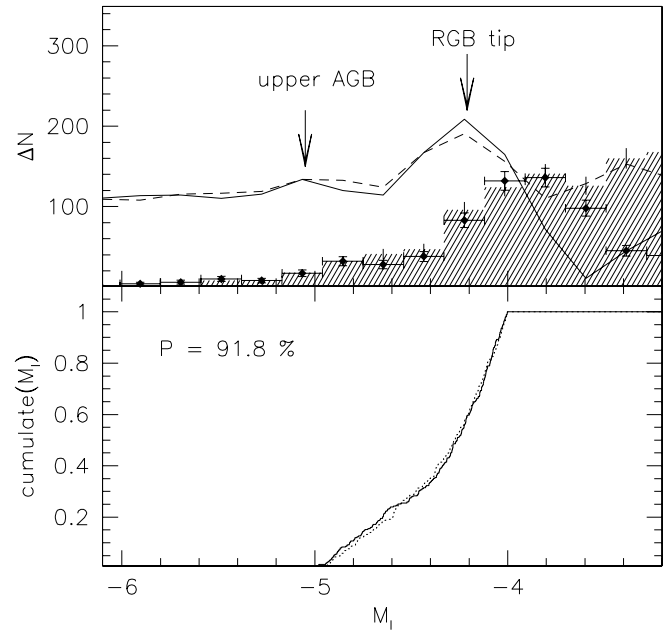


Fig. 6.—Comparison of the LFs of NGC 4038 (filled diamonds and error bars) and NGC 625 (shaded histogram and error bars) for stars selected far from star-forming regions. The solid and dashed curves represent the results of applying a Sobel filter to the luminosity function of NGC 4048 and NGC 625, respectively. *Bottom*: Cumulates of the NGC 4048 M_I (solid line), and that of the NGC 625 M_I , in the range $-5 \leq M_I \leq -4$. The result of the K-S test is also displayed.

we show that the close similarity of the two LFs adds further support to our distance modulus.

3.2. Comparison with Previous Distance Determinations

All recent studies of the Antennae adopt a distance based on its redshift, but the results are not unique, even if the adopted heliocentric velocity is almost the same ($v_{\text{hel}} \approx 1650$ km s $^{-1}$): variations of almost a factor of 2 are found in the literature (from, e.g., 19 Mpc in Wilson et al. 2000 to 33 Mpc in MDL92). In fact, different authors can adopt different values for the Hubble constant, and they can decide to correct for the solar motion in different ways (i.e., with respect to the Galactic center, to the Local Group, or no correction at all).

Therefore, a distance based on a standard candle is in dire need for this object, which is considered to be of great interest by a diverse community. In the past this was attempted by Rubin, Ford, & D’Odorico (1970), who were among the first to measure the radial velocity of the system ($v_{\text{hel}} = 1636$ km s $^{-1}$). They corrected the velocity to a Galactocentric value $v_{\text{rad}} = 1464$ km s $^{-1}$ and computed a distance of 19.5 Mpc (for $H_0 = 75$ km s $^{-1}$ Mpc $^{-1}$). However, they disregarded it, since “for such a low value of the redshift, the effects of anisotropy in the velocity field make the determination of distance by means of the Hubble constant unreliable.” Instead, they used as their primary distance indicator the size of the disk H II regions, which gave $D = 6$ Mpc. Other distance indicators (the brightest stars and the 1921 supernova) gave distances ranging from 6 to 13 Mpc, because of the unknown amount of internal absorption. The authors also pointed out that NGC 4027 is likely physically linked to the pair, and the distance of the latter galaxy at the time was estimated 12.5 ± 2.5 Mpc (de Vaucouleurs et al. 1968). In conclusion, although an accurate determination was not possible, there were indications of a distance shorter than that predicted by the redshift.

If, based on the Rubin et al. argument, we do not put much confidence in the redshift distance, then our new distance determination is within the range of values discussed above. This means that the velocity of the galaxy is enhanced with respect to a pure Hubble flow, and we can see if this large peculiar velocity is compatible with modern flow models.

A recent, detailed model predicting the velocities of galaxies in the nearby universe can be found in Tonry et al. (2000), who also provide the software to make one's own calculations.² The input of the model is the supergalactic position of the object. If we assume our short distance, then the position of the Antennae is $(x, y, z)_{\text{SGB}} = (-8.78, 9.83, -4.09)$ Mpc. At that position the model predicts a radial velocity $v_{\text{rad}}^{\text{mod}} = 1496 \text{ km s}^{-1}$ in the cosmic microwave background (CMB) reference frame (and actually the total predicted velocity is almost aligned with the line of sight). The velocity of the Antennae in the same reference frame is obtained by adding the velocity of the Sun with respect to the CMB, which is 369 km s^{-1} in the direction $(\text{SGL}, \text{SGB}) = (116.72, -26.69)$ (Lineweaver et al. 1996). Its projection along the line of sight is 353.21 km s^{-1} , so, finally, we obtain a velocity of the Antennae in the CMB reference frame of $v_{\text{rad}}^{\text{obs}} = 1995.21 \text{ km s}^{-1}$. The observed velocity is thus 500 km s^{-1} larger than the predicted one. The Tonry et al. model predicts a peculiar velocity dispersion of 187 km s^{-1} with respect to the local flow, so at our shorter distance the velocity of NGC 4038/4039 is 2.7σ larger than predicted by the model. While this is not an extreme discrepancy, one would still like to understand its origin. The discrepancy would be $+330 \text{ km s}^{-1}$ at the W99 position and -660 km s^{-1} at the MDL92 position.

We can recall that the short distance found by Rubin et al. was in agreement with simple flow models of the time. In particular, using the kinematic model of the local supercluster of galaxies by de Vaucouleurs (1958), Rubin et al. predicted a distance $D = (1 \pm 0.1)D_V = 10 \pm 1 \text{ Mpc}$, where D_V is the distance of the Virgo Cluster. In the de Vaucouleurs (1958) model the local supercluster had both a differential rotation and a recession velocity from its center, located in Virgo. The high velocity of the Antennae was then explained by its rotational velocity around the Virgo Cluster center. Note that the distance to the Virgo Cluster is now estimated $D_V = 16.4 \text{ Mpc}$ (Ferrarese et al. 2000), so the model would now give a distance to the Antennae of $D \simeq 15\text{--}18 \text{ Mpc}$, and a revision of the model parameters might bring D into agreement with our smaller value.

Another aspect of the problem is that flow models are valid in a statistical sense and for relatively large portions of the universe, so they can break down for individual objects. Indeed, the same discrepancy seen for the Antennae is present for one of the Tonry et al. galaxies near the position of the Antennae. Looking at their Figure 11, one notes an object near $(x, y)_{\text{SGB}} = (-10, 10) \text{ Mpc}$, whose radial velocity is, again, $\sim 300 \text{ km s}^{-1}$ larger than that predicted by the model. Objects near the Antennae region start to feel the pull of the Great Attractor (GA), toward SGL $\sim 160^\circ$, and Figure 11 of Tonry et al. shows several other objects with residual velocities pointing toward the GA.

A final indication of a short distance is given by the distance to NGC 4027, if we still accept the physical association of the two objects. The value is still uncertain, but Pence &

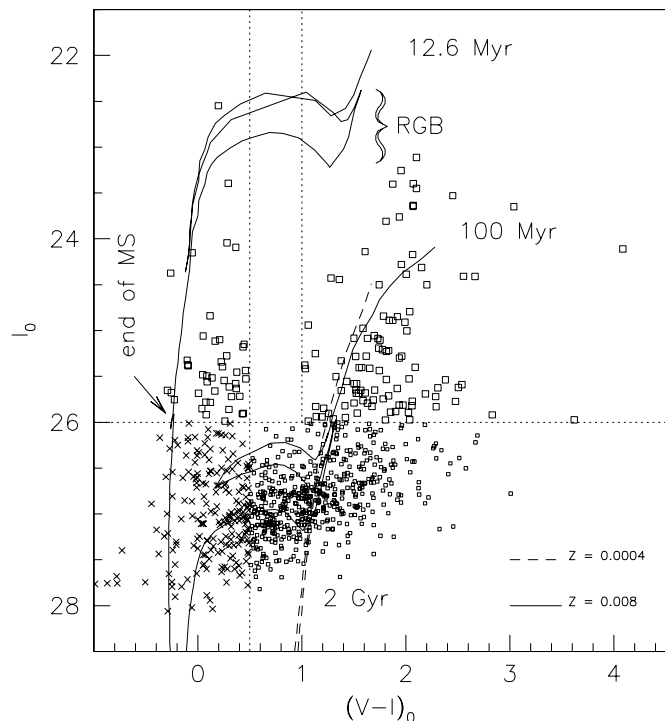


FIG. 7.—CMD of the PC field with three representative isochrones, assuming $(m - M)_0 = 30.7$. This diagram is used to define four subpopulations of stars: bright and faint blue MS stars younger and older than $\sim 12 \text{ Myr}$ (crosses and the large squares in the upper left region), bright red RGB and core helium-burning stars younger than $\sim 100 \text{ Myr}$ (large squares in the upper right region), and faint red RGB and AGB stars older than $\sim 2 \text{ Gyr}$ (small squares). The dotted lines separate these four populations. Note that the vertical extent of the bright red region is larger than that of a single RGB (identified by the curly bracket), a sign of extended star formation.

de Vaucouleurs (1985) adopt $10 \pm 1.5 \text{ Mpc}$ from several distance indicators. Again, this value is smaller than that based on the recession velocity ($D \approx 14 \text{ Mpc}$).

We note that the Tully Nearby Galaxies Catalog (Tully 1988) places NGC 4038/4039 in group 22-1 at a distance of 21 Mpc (based on distances to five members of the group). The same value has been found for NGC 4033 in that group by Tonry et al. (2001). There are regions of the sky where structures with similar redshifts but different distances can overlap, but this is not the case for the Antennae, which are closer than the Great Attractor and away from the Virgo cluster [look at Fig. 20 of Tonry et al., at position $(x, y)_{\text{SGB}} \approx (-10, 10) \text{ Mpc}$]. If our distance is confirmed, we must conclude that the association of the Antennae with group 22-1 is an optical superposition, as the Antennae are a factor 1.5 closer.

4. THE STELLAR CONTENT OF THE SOUTHERN TIDAL TAIL

Insight into the star formation history of the tidal tail can be obtained from both the spatial distribution of stars selected from different regions of the CMD and from direct analysis of the CMD. In the following sections we first analyze the spatial distribution of several subpopulations of stars and then perform a more detailed comparison of the CMD of the young population with the theoretical isochrones. We then estimate the mass in young stars by several methods using the main-sequence luminosity functions of the star-forming associations. Finally, we estimate the mass in old stars by comparing

² See <http://www.ifa.hawaii.edu/jt/SBF/sbf2flow.f>.

the luminosity function of stars located far from star-forming regions with that of a dwarf spheroidal galaxy of the Local Group.

4.1. Spatial Distribution of Populations as a Function of Age

Figure 7 shows the CMD from the PC chip and three isochrones from Girardi et al. (2000), which have been placed at the distance of the Antennae for $(m - M)_0 = 30.7$. The $Z = 0.0004$ isochrone (*dashed line*) represents the metal-poor, intermediate and old population. The two $Z = 0.008$ isochrones show the CMD morphology of the younger populations. For these isochrones, we use the nebular oxygen abundance of $\approx \frac{1}{3}$ solar measured by MDL92, which likely applies to all of the recently formed stars. Older stars likely have lower metallicities, so in the following we let Z vary within a wide range (from 0.004 to 0.02).

Using Figure 7, we define four regions of the CMD: bright blue, faint blue, bright red, and faint red stars. The limit between bright and faint is set at $I_0 = 26$. Blue stars are stars bluer than $(V - I)_0 = 0.5$. Faint red stars are those redder than $(V - I)_0 = 0.5$, while bright red stars are those redder than $(V - I)_0 = 1$. These regions are delineated by dotted lines in Figure 7. For the quoted distance modulus, and letting the metallicity Z vary between $Z = 0.0004$ and $Z = 0.02$, we find that the regions delineating the bright and faint blue stars will

contain mostly MS stars of ages less than or greater than ≈ 10 to ≈ 13 Myr, depending on Z . In Figure 7 we see that the “hook” marking the end of the MS is right at $I_0 = 26$ for a 12.6 Myr, $Z = 0.008$ population. The region of bright red stars will contain mostly RGB and core helium-burning stars younger than ≈ 80 to ≈ 100 Myr, again depending on Z . The limit $I_0 = 26$ is reached by the RGB tip of a 100 Myr, $Z = 0.008$ isochrone; the isochrone also shows that the progenitors of bright red stars were located inside the faint blue region. Finally, the faint red stars region will contain mostly RGB and AGB stars older than ≈ 2 Gyr.

The spatial distribution of each of these populations is shown in Figures 8 and 9. Figure 9 also shows the distribution of the starlight (*gray scales*) and the neutral atomic gas (*contours*; from the VLA³ data of Hibbard et al. 2001). With respect to the gas distribution, we see that the stars are well embedded within the ISM, with no signs of a relative displacement. Interestingly, a higher $H\text{ I}$ density is observed in coincidence with the eastern barlike structure, where the most active star formation is observed (see § 4.2) and which contains

³ The VLA is operated by the National Radio Astronomy Observatory, which is a facility of the National Science Foundation, operated under cooperative agreement by Associated Universities, Inc.

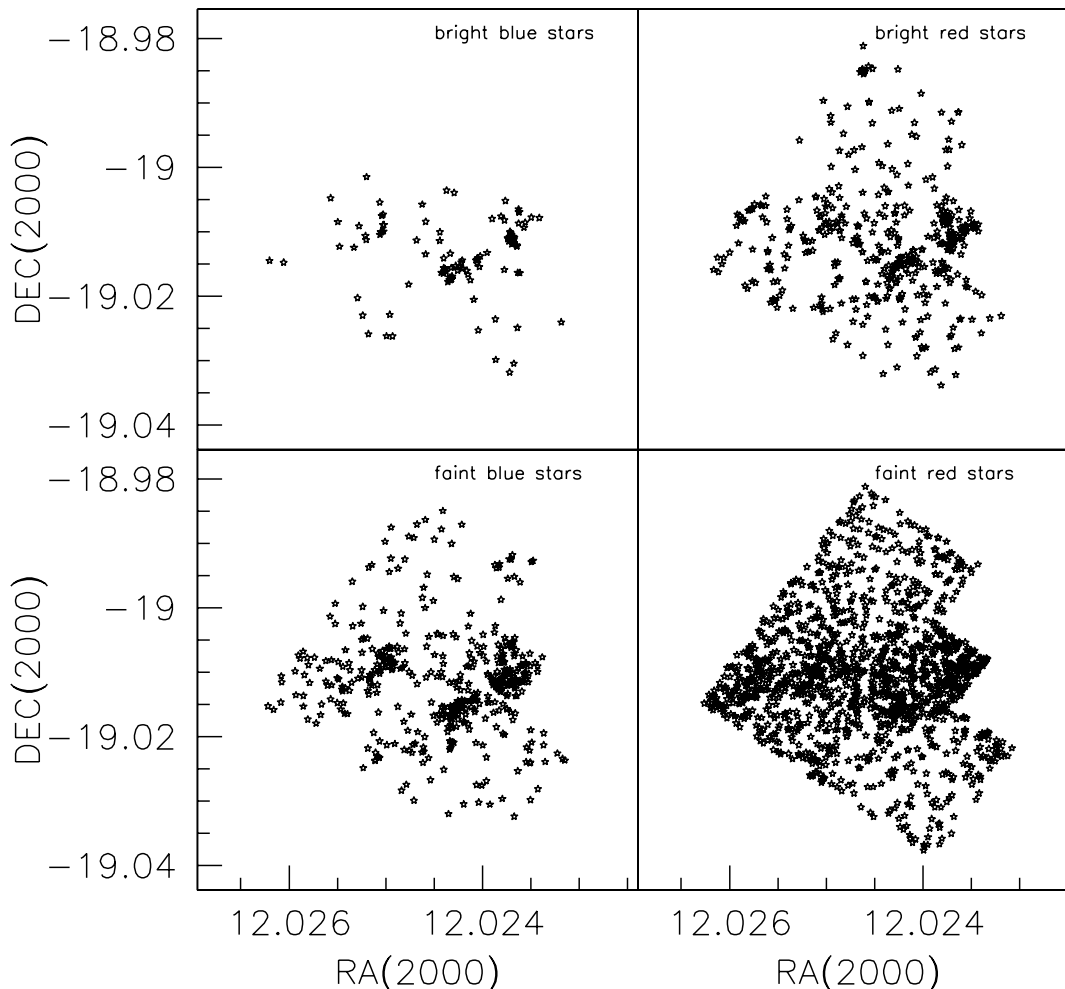


FIG. 8.— J2000.0 positions of several subpopulations, identified by the labels in the top right corner. These populations are those delineated in Fig. 7. The faint red stars, which we identify with old stars originally in the outer disk of NGC 4038, show a broader and uniform spatial distribution.

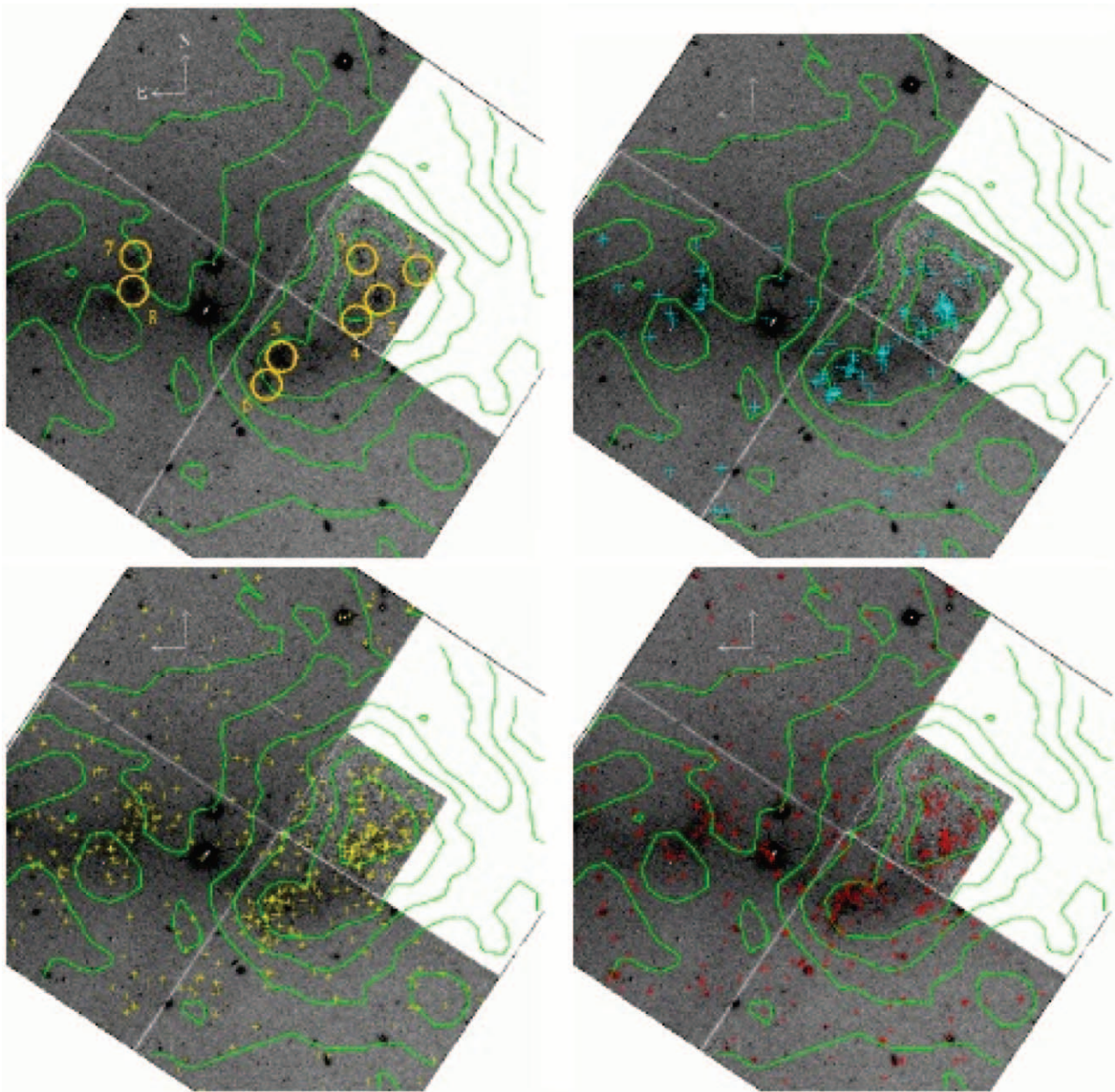


FIG. 9.—Gray-scale representation of the F555W frame with H I column densities from the intermediate-resolution data cube of Hibbard et al. (2001) and the location of various stellar populations (see Fig. 7) superposed. The H I density runs from $5 \times 10^{19} \text{ cm}^{-2}$ to $1.05 \times 10^{21} \text{ cm}^{-2}$, in steps of $2 \times 10^{20} \text{ cm}^{-2}$. *Top left*: Location of the eight blue stellar associations identified in Table 2 and discussed in § 4.2 indicated by the numbered circles with a radius of $4''$. *Top right*: As in top left, but with the location of the bright blue stars indicated by cyan crosses. *Bottom left*: As in top left, but with the location of the faint blue stars indicated by yellow crosses. *Bottom right*: As in top left, but with the location of the bright red stars indicated by red crosses.

the three H II regions studied by MDL92. The youngest (bright blue) stars are clearly also concentrated along this structure. Moreover, the most active sites of star formation are located at the two extremes of the elongated structure, as is often observed in dwarf irregulars. Not surprisingly, both luminous and fainter main-sequence stars follow a similar spatial distribution, with the youngest stars being the most tightly concentrated.

Bright red stars follow the distribution of main-sequence stars, which indicates that the star formation started at least 100 Myr ago. The faint red stars, which we identify with old stars originally in the outer disk of NGC 4038, show a broader and more uniform spatial distribution (Fig. 8), which gives an idea of the underlying structure of the tail. Note also an ap-

parent increase in surface density toward the north, probably connected with the low surface brightness extension of the tail first discussed by S78 (see also Fig. 1).

4.2. Young Star-forming Associations

To characterize the recent star formation, we have selected those stellar associations that show an overdensity of stars within a few arcseconds and that contain stars brighter than $I_0 = 27.5 \text{ mag}$ (i.e., younger than 32 Myr for $Z = 0.008$ and our choice of distance modulus). Magnitudes and star counts were measured within a radius of $4''$, which corresponds to $\simeq 268 \text{ pc}$ for a distance modulus $(m - M)_0 = 30.7$, or $\simeq 370 \text{ pc}$ for the more commonly accepted distance modulus of $(m - M)_0 = 31.41$ (e.g., W99). The result is eight associations,

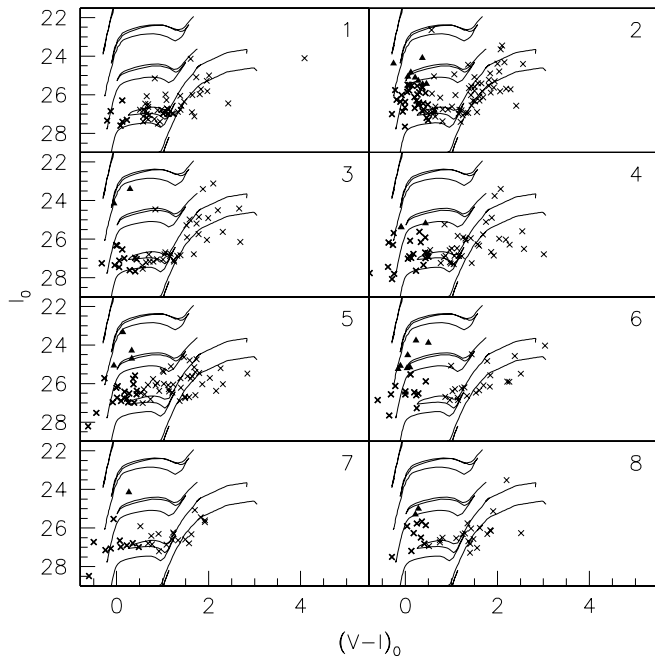


FIG. 10.—Color-magnitude diagrams of eight associations of blue stars. The solid curves represent post-MS isochrones taken from Girardi et al. (2000), for ages of 4, 12.6, 39.8, 126, and 398 Myr (corresponding to masses at the termination of the MS of about 42.6, 15.8, 8, 4.5, and $2.7 M_{\odot}$), and a metallicity ca. $\frac{1}{2}$ solar ($Z = 0.008$). Here we adopt $(m - M)_0 = 30.7$. The groups of stars have been selected from within a radius of $4''$ around sites of more active star formation. The plots are arranged in order of increasing R.A., from left to right and top to bottom. Thus the top four panels show CMDs from the PC chip star formation regions. They are followed by two regions taken from the WF4 chip, and finally the bottom two come from the WF3 chip. The stars bluer than $(V - I)_0 = 0.5$ (*heavier crosses*) have been used to construct the LFs, and among these potential ionizing stars (i.e., $M_I \leq -5.23$) are plotted as filled triangles.

whose locations are indicated in the top left panel of Figure 9 and whose CMDs are shown in Figure 10.

The CMDs of these eight associations are used to compute their integrated properties, which are summarized in Table 2. The table presents, from left to right, our identification number (and that of MDL92 when appropriate), the equatorial coordinates of the center of each region, the number of blue and total number of stars, then separately for the blue $(V - I)_0 \leq 0.5$ and total populations: the absolute integrated I and V magnitudes

and true color. Not surprisingly, the three associations with the highest flux in V (i.e., those having $M_V \leq -9.4$) coincide with the three H II regions studied by MDL92.

We now address the question of whether these regions contain enough ionizing stars to account for the H α fluxes observed by MDL92. To produce a significant ionizing flux, stars must be earlier than O5 V, i.e., brighter than $M_I = -5.23$ (Cox 1999). We therefore select stars bluer than $(V - I)_0 = 0.5$ and brighter than $I_0 = 25.47$ in our CMD (*black triangles*, Fig. 10). We estimate the expected Lyman continuum luminosity ($L_{\text{Ly}\alpha}$) of these stars from Table 3 of Vacca et al. (1996). Given the Lyman continuum luminosities of each region, we calculate the expected H α luminosities using Table 2 of Rozas et al. (1999). The expected H α luminosities are 9×10^{38} ergs s $^{-1}$, 1.1×10^{39} ergs s $^{-1}$, and 6.8×10^{38} ergs s $^{-1}$ for regions I, II, and III, respectively. Comparing these with the H α luminosities measured by MDL92, converted to our smaller distance (5×10^{38} , 1.4×10^{38} , and 2.8×10^{37} ergs s $^{-1}$ for regions I, II, and III, respectively), we find that there is more than enough ionizing radiation expected in these regions.

Another clue to the nature of the recent star formation is provided by a comparison of our modest sample of clusters with the so-called super-star clusters (SSCs) observed throughout central regions of the merging disks by Whitmore et al. (1999). Figure 11 shows such a side-by-side comparison, where the left column includes two examples of the W99 superclusters, and the right column includes two instances taken from our frames, where the three brightest knots are displayed (regions I–III of MDL92). To compare the star formation regions at different resolutions, the top two images have been extracted from the PC chip ($0''.05$ pixels), whereas the bottom two come from the WF4 chip ($0''.10$ pixels).

Within the central regions, there are dozens of roughly spherical SSCs, which contain more than $10^5 M_{\odot}$ of stars (W99). In contrast, the associations observed in the tidal tail are irregular in shape and contain less than 100 stars brighter than $I_0 = 28$. Indeed, we see from Table 2 that even the brightest associations have V luminosities falling in the faint bin of the W99 cluster LF, and most are close to their $M_V = -9$ faintest limit. It is then clear that within the tail we do not observe the kind of SSCs that have been produced in the “violent” central regions. The linear sizes look comparable to those of the central clusters, implying that the tail associations are in a much less dense environment. One might conclude that SSCs require the higher pressures found in the central

TABLE 2
PHOTOMETRIC PROPERTIES OF THE EIGHT ASSOCIATIONS

No.	R.A.	DECL.	N_b	N_T	BLUE			TOTAL		
					M_I	M_V	$(V - I)_0$	M_I	M_V	$(V - I)_0$
1.....	12 01 24.53	-19 00 32.40	7	54	-6.4	-6.6	-0.1	-9.6	-8.3	1.2
2 \equiv III.....	12 01 25.30	-19 00 40.32	39	96	-9.7	-9.5	0.1	-10.9	-10.1	0.8
3.....	12 01 25.63	-19 00 28.80	15	47	-8.8	-8.6	0.1	-10.2	-9.2	1.0
4.....	12 01 25.78	-19 00 45.37	24	60	-8.5	-8.5	0.1	-9.9	-9.0	0.9
5 \equiv I.....	12 01 27.29	-19 00 54.72	23	64	-9.3	-9.1	0.2	-10.2	-9.5	0.7
6 \equiv II.....	12 01 27.57	-19 01 01.56	19	41	-9.3	-9.2	0.1	-10.0	-9.4	0.6
7.....	12 01 30.13	-19 00 26.28	11	29	-8.0	-7.9	0.1	-9.0	-8.3	0.7
8.....	12 01 30.19	-19 00 35.28	11	32	-8.1	-7.8	0.2	-9.3	-8.3	1.0

NOTES.—The absolute magnitudes have been computed assuming the W99 distance modulus ($m - M_0 = 31.4$). The columns headed “R.A.” and “Decl.” are the equatorial J2000.0 coordinates, N_b is the number of blue stars, and N_T is the total number of stars. Magnitudes and colors have been corrected only for foreground absorption and reddening. The associations number is given in the first column, and the labels I, II, and III identify the three star-forming regions studied by MDL92.

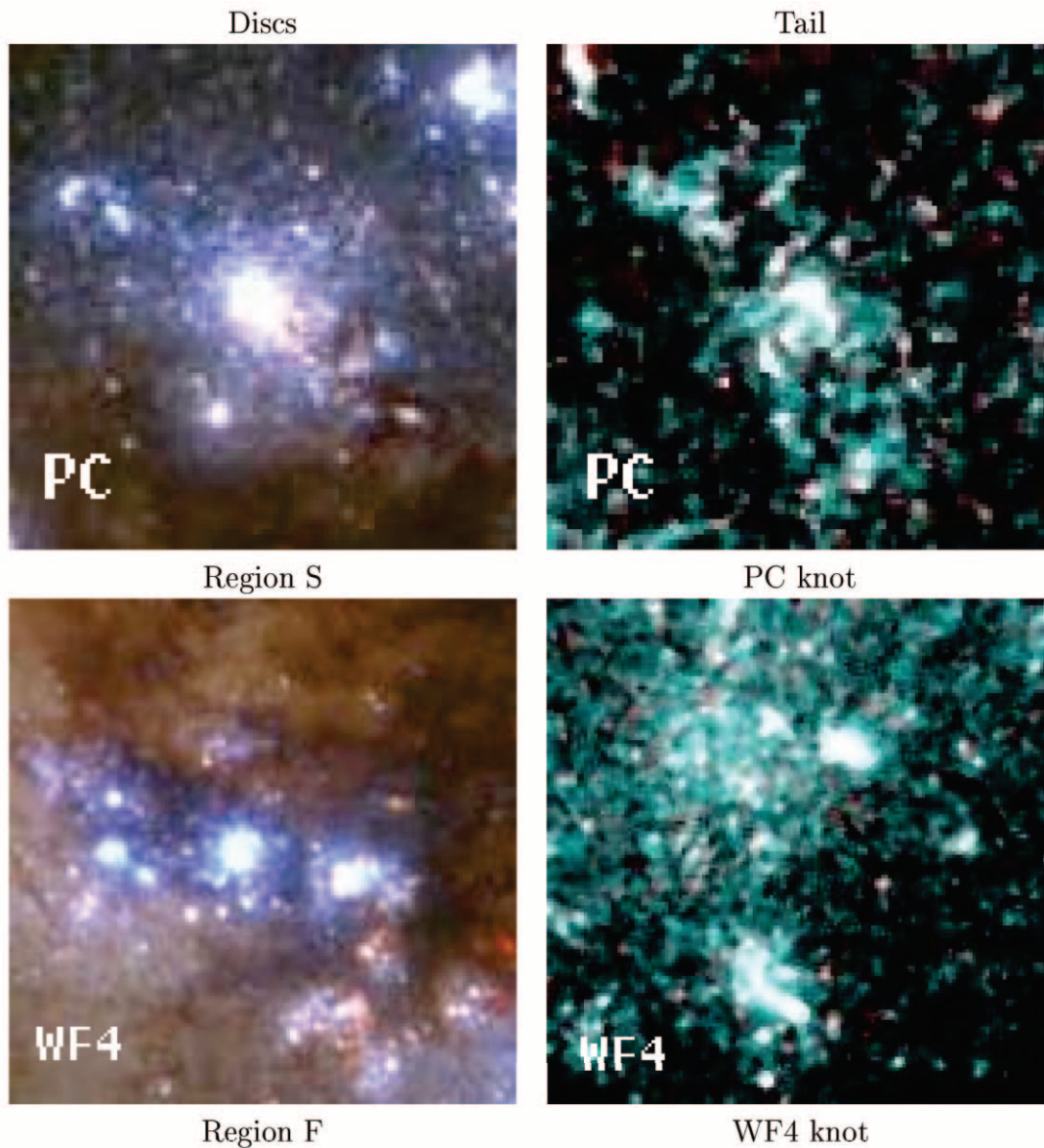


FIG. 11.—Here we compare the visual appearance of two OB associations of the tidal tail to that of two “super” clusters extracted from Whitmore et al. (1999). The size of the fields are $15'' \times 15''$ and $10'' \times 10''$ for the WF4 and PC images, respectively.

regions in order to form (e.g., Jog & Das 1992, 1996; Elmegreen & Efremov 1997), while spontaneous star formation in the tail produces the kind of OB star associations seen in dwarf irregular galaxies.

4.3. Comparison to Theoretical Isochrones

The CMDs for each of the associations are presented in Figure 10, with post-MS isochrones taken from Girardi et al. (2000) drawn for ages between 4 and 400 Myr (for a distance modulus of 30.7), and a metallicity $Z = 0.008$. Figure 12 shows the luminosity functions for each association, with the luminosity of the termination of the MS (TMS) indicated by vertical dashed lines, for a range of ages and the same metallicity. Note that adopting the larger W99 distance modulus would shift all ages to younger values. For example, most stars of association No. 2 would be older than 6 Myr, instead of 8 Myr.

The CMDs show a distinct blue MS up to ~ 40 Myr, but also a population of red supergiants, which are stars in either the RGB or the core helium-burning phase. Since the bright

red stars follow the spatial distribution of the blue stars (Figs. 8 and 9), we believe that the red populations belong to the same associations defined by the blue stars. If these associations represented single star formation episodes, then the RGB stars would be confined in an almost vertical CMD region with a relatively short extent in luminosity (~ 1 mag), as shown in Figure 7. Instead, the red vertical sequence extends for several magnitudes, as one can see in the most populated associations such as No. 2. Thus, it seems like stars have been forming for a few hundred megayears, possibly at a continuous rate.

The most populous association is No. 2 (region III from MDL92; also shown in Fig. 11, *top right*), with 39 stars on the MS, and its CMD shows that most of its stars were formed more than ~ 8 Myr ago (see also Fig. 12, *top right*). Both the CMDs and LFs seem to indicate that there are few stars younger than 8 Myr in any of the eight associations. However, it is interesting to note that the youngest stars are observed in associations Nos. 2, 3, 5, and 6, and that three of these

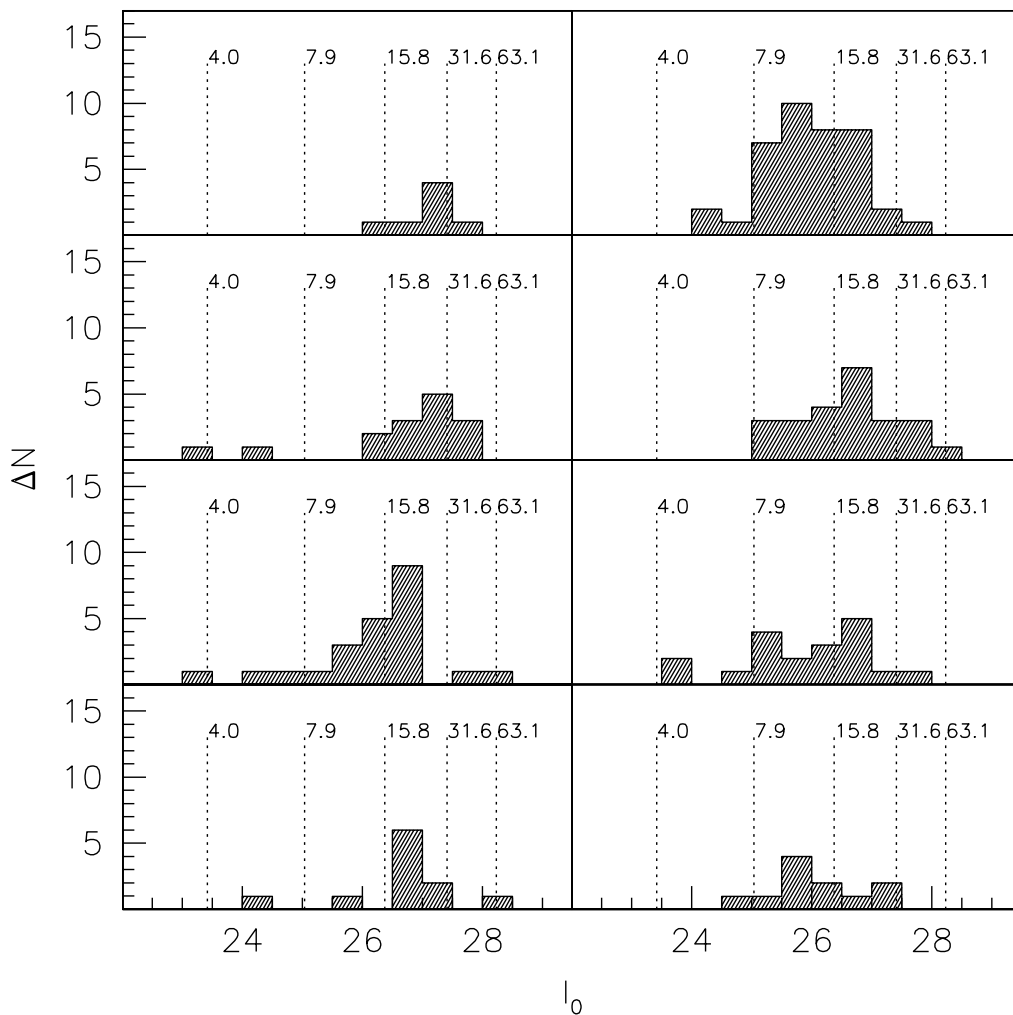


FIG. 12.—Luminosity function of the blue stars identified in Fig. 10. The vertical dotted lines mark the end of the MS phase for several choices of the age, in megayears, and a metallicity $Z = 0.008$. The arrangement of the panels is the same as that of the CMDs.

coincide with the star formation regions studied by MDL92. In particular, the youngest stars are seen in association 5, which coincides with association I of MDL92, who indeed found that this association is younger than the other two, containing stars whose age they estimated as ≤ 2 Myr. We find stars as young as 3 Myr in that association, and using an isochrone with slightly lower metallicity would reconcile our estimate with that of MDL92. For the other two associations, MDL92 estimated ages ≤ 6 Myr, and indeed stars younger than that age are observed in associations 2 and 6.

4.4. The Mass in Young Stars

To characterize the star formation and to compare it with what is observed in dwarf galaxies, we estimate the stellar mass in the young and old populations. We start by computing the mass in young stars in the eight associations, based on their main-sequence LF. Since all associations show extended star formation, we will treat star formation in the tail as a global process and thus consider an integrated LF over all associations (see Fig. 13). The LF must be complete down to $M_V = -4.2$ (i.e., $V_0 = 26.5$), since our limiting magnitude is $V_0 = 28.5$ and completeness runs from 1 to 0 in ≈ 2 mag for WFC2 imaging in crowding conditions similar to ours (see, e.g., Brocato, Di Carlo, & Menna 2001 and Harris et al. 1998).

A realistic estimation of the mass in young stars needs a model of star formation, and a simple approach is developed in Appendix B3. However, to guess the order of magnitude of the mass and as a check of our model predictions, we start by computing this quantity under the hypothesis of a simple stellar population (SSP). After computing the mass in the eight associations, we extrapolate it to our whole region. The details of the process are left to Appendix B, while here we summarize the main results.

To estimate the mass of a SSP, we can either compare its LF with that of another SSP of known mass or use the results of stellar population synthesis. Thus, we first compare the main-sequence LF of the eight associations with that of a young populous cluster of the Large Magellanic Cloud (NGC 2004), and then we use the theoretical results of Renzini (1998) and Maraston (1998) to find the size of a young stellar population whose upper LF matches the observed LF.

In the first case we find that the eight associations contain a factor 3.4 ± 1.2 more stars than NGC 2004, or $(6.8 \pm 2.4) \times 10^4 M_\odot$ in young stars (using the cluster mass given by Mould et al. 2000). If we use the theoretical approach, then the resulting mass in young stars is $(2.1 \pm 0.2) \times 10^4 M_\odot$ (assuming a mass-to-light ratio $M/L_{\text{bol}} = 0.036$, and a Salpeter 1955 power-law mass function of exponent $\alpha = -2.35$). A few

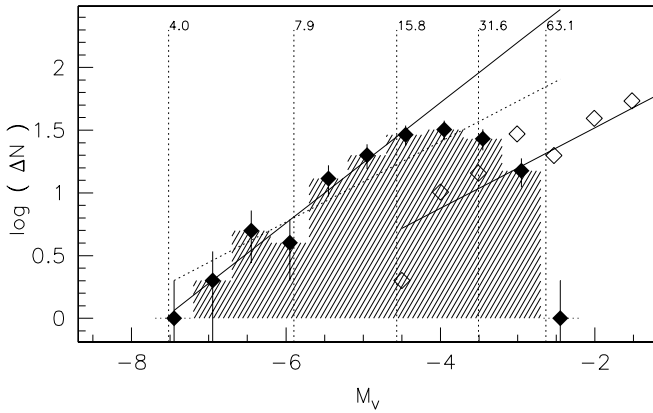


FIG. 13.—Here we show the logarithmic integrated M_V luminosity function of all the eight associations (filled diamonds and shaded histogram). The solid line is a power law with exponent 0.48, as obtained by Cole et al. (1999) for IC 1613, fitted to the data for the brightest two magnitudes ($V_0 \leq 26.5$ or $M_V \leq -4.2$). The open diamonds represent the main-sequence LF of the LMC cluster NGC 2004 (Keller et al. 2000), to which a straight line has been fitted, yielding a slope $a = 0.32 \pm 0.04$. The dotted line represents a power law of the same exponent, fitted to the bright part of our LF. We assumed a LMC distance modulus and absorption of $(m - M)_0 = 18.5$ and $A_V = 0.249$, respectively. The vertical dotted lines mark the end of the MS phase for several choices of the age, in megayears, and a metallicity $Z = 0.008$. With these choices, we find the same age for NGC 2004 as that derived by Keller et al. (2000), i.e., 15.8 Myr.

$10^4 M_\odot$ of young stars within the eight associations are then predicted under the SSP hypothesis.

The inconsistency between the previous mass estimates could be another sign of an extended star formation history. Further, the brighter part of the LF is better fit by a power-law of exponent $\alpha = 0.48$ (0.1 residual dispersion in $\log \Delta N$) than by our template SSP power-law of exponent $\alpha = 0.32$ (0.2 residual dispersion), and according to Cole et al. (1999) an exponent $\alpha = 0.48$ is a sign of continuous star formation. Therefore, in Appendix B3 the mass of the young population is computed under this hypothesis. For this, we assume that star formation has been constant up to now, since a posteriori one can see that this simplification gives a reasonably good fit to the observed LF.

The model predicts the past SF rate as $\dot{M} = 6 \pm 3 \times 10^{-3} M_\odot \text{ yr}^{-1}$, in agreement with the rate computed by MDL92 from the $H\alpha$ luminosity of the three H II regions (and scaled using our distance value). Such a rate yields a mass of $1.1 \times 10^5 M_\odot$ produced during the last 20.6 Myr spanned by our LF. This mass is larger than that computed above, so we see that the SSP hypothesis leads to an underestimate of the real mass.

By comparing the LF of all MS stars to that of the eight associations, we infer that in the entire region $(1.9 \pm 0.2) \times 10^5 M_\odot$ were converted into stars since 20.6 Myr ago. An absolute constraint on the mass of young stars comes from the total luminosity measured in this vicinity by MDL92 of $V = 17.3$ mag, or $1.8 \times 10^6 L_{V\odot}$, assuming a distance of 13.8 Mpc. If we assume that 100% of this luminosity is due to young stars, it corresponds to $4.5 \times 10^5 M_\odot$ (for the M/L of a solar metallicity population of age 100 Myr and Salpeter IMF), only a few times larger than our estimate. So the present star formation rate must have been sustained for only a few tens of megayears. The oldest stars seen in the associations must then have been produced during a period of lower star formation rate or in discrete episodes.

4.5. The Mass in Old Stars

As recalled above, stellar populations older than ~ 2 Gyr show a well-populated RGB, which ends at an M_I that is almost independent of age and metallicity (Fig. 5). Furthermore, the RGB luminosity function is a power law whose index is again almost independent of those two variables. As an example, Saviane et al. (1996) show that the LF of the dwarf spheroidal (dSph) in Tucana is similar to that of the Fornax dSph, yet Tucana hosts a globular cluster-like, metal-poor population, while Fornax is a few gigayears old with an intermediate metallicity. Thus, we can estimate the mass of the old population of the tail by comparing the LF of its RGB with that of another old population of known mass. The old population was isolated from the young populations in § 3.1, and its CMD was presented in Figure 5, so we build the corresponding LF simply counting stars in magnitude bins. Unfortunately, the errors of the NGC 4038/4039 photometry are so large that we cannot separate the AGB from the RGB based on their colors, so there will be some contamination of the LF by stars younger than ~ 2 Gyr. On the other hand, the contribution of the AGB to star counts is ~ 2 orders of magnitude smaller than that of the RGB (see, e.g., Fig. 6), so the mass that we compute will be close to the correct value.

With respect to an old population with known mass, we decided to use a dSph galaxy of the Local Group. These galaxies are ideal for this kind of comparison since they are very close to the Milky Way, their physical characteristics are known with good accuracy, and they contain statistically significant numbers of old stars. In particular, we use the Fornax dwarf, since it was recently studied in Saviane et al. (2000), and its photometry is readily available. We take the RGB from their field C (the most populated one) and before constructing the LF, we enhance the photometric errors, as was done for our comparison with NGC 625 (§ 3.1). Moreover, we multiply the counts by a factor 4.8, since the Fornax field contains fewer stars than the NGC 4038/4039 field,

For a correct estimation of the mass, we must also remember (1) that field C of Saviane et al. contains only 5% of the total population of Fornax (based on a King light profile and parameters from Irwin & Hatzidimitriou 1995) and (2) that the total area of the WFPC2 field is 4.1 times larger than the portion where the old population was isolated.

The luminosity functions of the Fornax dwarf and of our NGC 4038/4039 field are compared in Figure 14, which shows their close agreement. For $-5 \leq M_I \leq -4$, a K-S test gives a 98.1% probability that the two distributions share the same parent. The Sobel filter applied to the NGC 4038 LF gives the result shown by the solid line, and the dashed line shows the result for the Fornax LF. As in the comparison with NGC 625, we see the coincidence of the primary peaks at $M_I = -4.2$, corresponding to the RGB tip, and even that of the secondary peaks at $M_I \approx -5$, corresponding to the upper AGB. The NGC 4038 curve starts to deviate from that of Fornax below $M_I = -4$, where incompleteness starts to affect our photometry.

The Fornax distance modulus and absorption were taken from Saviane et al. [2000; $(m - M)_0 = 20.7$, and $A_I = 0.058$]. Since that distance was based on the old value for the luminosity of the RGB tip, a 0.2 mag correction was added to the distance modulus. In the comparison with NGC 625, its distance modulus was a free parameter, while now the Fornax distance is fixed. The very good match between the two LFs then means that Figure 14 not only can be used to estimate the

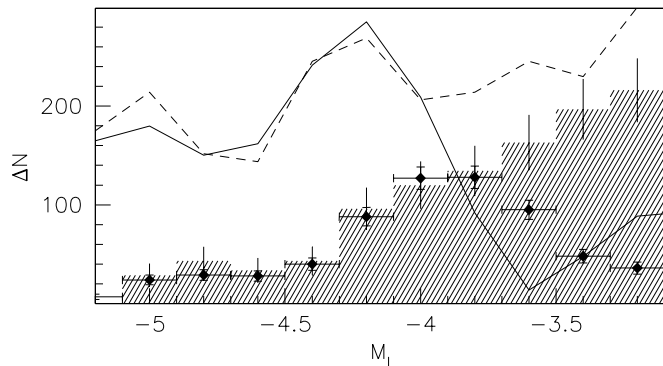


FIG. 14.—Luminosity function of the Fornax dSph (*shaded histogram with error bars*) is compared with that of the NGC 4038 tail (*filled diamonds with error bars*). Notice the agreement at the bright end, prior to the point where the Antennae data suffer from incompleteness. The x -axis represents absolute I magnitudes after correcting the two LFs for the respective distances and foreground absorptions of the two objects. The curves show the results of applying a Sobel filter to the NGC 4038 (*solid curve*) and Fornax LFs (*dashed curve*). Both curves show two main peaks, a higher one at $M_I = -4.2$ and a smaller one at $M_I \approx -5$. The first one corresponds to the RGB tip, while the second one is due to the upper AGB.

mass of the old population in the NGC 4038 tail, but that it also provides further strong support to our short distance.

Based on the previous discussion, the number of old stars in the NGC 4038/4039 field, N_{tail} , is given by $N_{\text{tail}} = N_{\text{Fornax}} \times 4.8 \times 4.1 \times 0.05 = 0.98 \times N_{\text{Fornax}}$. This assumes a roughly constant density of old stars across the WFPC2 field. Since the mass of Fornax is $6.8 \times 10^7 M_{\odot}$ (Mateo 1998), assuming the same M/L , we find that there are $6.7 \times 10^7 M_{\odot}$ of old stars within the limits of our WFPC2 field.

Again, we can check whether this value is compatible with the total light measured by MDL92 in their field. If 100% of the $1.8 \times 10^6 L_{V_{\odot}}$ is in old stars, then it would correspond to $\approx 8 \times 10^6 M_{\odot}$ if the Fornax $M/L = 4.4$ is used. The latter mass is smaller than our value, but our photometry reaches well below the surface brightness limit of ground-based imaging, so we conclude that our value of the mass for the old population is a reasonable estimate.

5. SUMMARY AND DISCUSSION

In this paper we have analyzed the stellar content of a region of linear dimension ~ 8 kpc, in the southern tail of the Antennae system of interacting galaxies. According to dynamical simulations (e.g., Barnes 1988) the material of the tail has been pulled out of NGC 4038 by the tidal field of NGC 4039 ~ 450 Myr ago (for Milky Way-sized progenitors), and previous ground-based studies of this area have shown that stars are now actively forming in a few regions (S78, MDL92). The WFPC2 camera on board of the *HST* has now been used to obtain, for the first time, broadband F555W and F814W photometry and astrometry of more than 4000 stars within the region studied by MDL92.

A population of faint red stars is seen in the CMD. This population shows no clumping in its spatial distribution, and it was presumably ejected from the outer disks of the interacting galaxies. We have isolated a subsample of this population by selecting only stars from regions far from the active star-forming areas. The selected sample shows a sharp cutoff in the LF at $I_0 < 26.5$. The LF is almost identical to that of the low surface brightness component of the star-forming dwarf

irregular galaxy NGC 625, and based on this comparison we interpreted the cutoff as the RGB tip of a few gigayears old population. This yields a distance to the Antennae of 13.8 ± 1.7 Mpc, much shorter than the typically quoted ~ 20 Mpc. The choice of a shorter distance is reinforced by comparing the LF of this population with that of VCC 1104, a dwarf elliptical galaxy in the Virgo Cluster (see Appendix A) and to that of the Fornax dwarf spheroidal galaxy in the Local Group.

Our imaging with WFPC2 along with the VLA neutral hydrogen map of Hibbard et al. (2001) gives a better picture of the stellar populations at the end of the southern tail of the Antennae. We find that the regions of most active star formation coincide with the H I areas of highest density ($> 8 \times 10^{20} \text{ cm}^{-2}$) and that the brightest young star-forming associations are similar to those seen in dwarf irregular galaxies. In particular, there are two elongated structures that contain most of the associations, and one of them is the “bar” identified by MDL92. Our color-magnitude diagrams confirm the intuitive picture that the smooth structure of the tail is composed of older stars from the disks of NGC 4038/4039 that were launched along with the gas, as a result of the interaction. The youngest stars are mostly concentrated in OB associations, but can also be found scattered over the whole region.

In contrast to the inner regions there are no “super-star clusters” seen in this region of the tail. The young tidal associations are more diffuse and have orders of magnitude fewer stars than the central star clusters. The eight most prominent associations have been used to study the recent star formation in the area. We are able to measure the luminosity function of their main sequence to reach stars as faint as $M_V = -4.2$ corresponding (roughly) to ages of 20 Myr and masses of $14 M_{\odot}$ (in the hypothesis of a short distance modulus). In this range it would appear that the star formation has been continuous.

Considering the stellar mass budget of the whole area that we studied, by comparing the LF of the red-low surface brightness component with that of the Fornax dSph galaxy, we find that most of the mass ($\approx 6.7 \times 10^7 M_{\odot}$) is contained in an old (> 2 Gyr) stellar population, of order the stellar mass of Fornax itself. With a simple model of constant star formation we show there is a further $\approx 2 \times 10^5 M_{\odot}$ of stars formed in situ (including young stars outside the eight associations), within the last 20 Myr.

Detailed investigations of the star formation process occurring well outside the boundaries of a disk or the potential well of a galaxy are rare. Mould et al. (2000) images the radio jet-induced star formation near NGC 5128 and finds a population similar to ours, with young OB associations but no massive star clusters. Clearly, star formation requires only the presence of gas of sufficient density and not the large-scale organizing gravitational potential of a disk, spiral arm, or galaxy.

One of the most important results of this work is the downward revision of the distance to the Antennae, which follows the first determination of the distance modulus based on a standard candle. This revision has consequences for the nature of the TDG candidates, for the stellar populations within the inner regions, for the dynamical nature of the system, and for the dynamical models of the local universe.

With respect to the TDG candidates, Hibbard et al. (2001) used the H I kinematics to explore the dynamical nature of the regions studied by both MDL92 and S78. Specifically, they evaluate the ratio of the luminous mass, as inferred from the

H I and optical luminosity, and the dynamical mass inferred from the H I line width and physical radius. They derive ratios of $M_{\text{lum}}/M_{\text{dyn}} \sim 0.3\text{--}0.7$ for a distance of 19.2 Mpc, where the range indicates stellar mass-to-light ratios ranging from $M_*/L_B = 0\text{--}5$ (the analysis in Appendix B1 suggests a mass-to-light ratio near the bottom of this range). Since the baryonic mass scales as the square of the distance, while the dynamical mass scales linearly with distance, a distance modulus of 30.7 requires revising these estimates downward by a factor of 1.4 (i.e., $M_{\text{lum}}/M_{\text{dyn}} \sim 0.2\text{--}0.5$). If either of these regions are self-gravitating entities, i.e., bona fide tidal dwarf galaxies, then most of their mass must be in the form of dark matter. This is quite hard to understand if they formed from disk material. Rather than witnessing the formation of a single large dwarf galaxy, we find it more likely that we are seeing several smaller scale regions forming stars. The mass scales of these regions are more typical of dwarf spheroidal galaxies than dwarf irregulars, and they may have more relevance to remnant streams around galaxies than the formation of dwarf irregular galaxies (Kroupa 1998).

With respect to the populations believed to result from the merger induced star formation taking place in the inner regions, all linear dimensions quoted in W99 would be reduced by a factor of 1.4, so the effective radii of the youngest clusters created in the merger would now be comparable to those of Galactic globulars (W99 find a median effective radius ~ 1.5 times larger than that of GGCs). The young clusters' LF would, of course, still be a power law; however, the bend found by W99 at $M_V \approx -10.4$ would now be a factor 2 fainter in luminosity and the corresponding mass would be smaller, assuming the same M/L value. W99 identified the bend with the characteristic mass of Milky Way globular clusters, although their value of $1 \times 10^5 M_\odot$ is smaller than that of GGCs ($\approx 2 \times 10^5 M_\odot$). With the shorter distance modulus, the mass of the bend would now be $\approx 5 \times 10^4 M_\odot$, making this identification weaker.

With a smaller distance, the ‘‘ultraluminous’’ X-ray source population discovered by Fabbiano, Zezas, & Murray (2001; see also Zezas et al. 2002; Zezas & Fabbiano 2002), while still extreme in its properties, becomes both less luminous (peak X-ray luminosity of $L_X = 5 \times 10^{39}$ ergs s^{-1} versus 2×10^{40} ergs s^{-1}) and less populous (six instead of 18 with $L_X > 10^{39}$ ergs s^{-1}). The X-ray sources in the Antennae are still luminous, but the new distance makes their luminosity function comparable to those found in other starburst galaxies (see Zezas & Fabbiano 2002).

Finally, with respect to the dynamical models of the local universe, we compare the predicted and observed radial velocity of the Antennae at the new distance, using the Tonry et al. (2000) galaxy flow model of the local universe, and find that the model predicts a velocity 500 km s^{-1} smaller than that of NGC 4038/4039. The discrepancy would hold even if we used the W99 distance (it would then be $>300 \text{ km s}^{-1}$).

Considering the importance of the distance estimate for a physical understanding of the Antennae, we would urge that the distance modulus be confirmed with deeper *HST*/ACS observations.

We thank Brent Tully and Stéphane Courteau for helpful insight on galaxy distances in the local supercluster. We also thank Alan Whiting for making very useful suggestions on the

question of the distance to the Antennae. An anonymous referee provided substantial help for the improvement of an earlier version of this manuscript. Based on observations made with the NASA/ESA *Hubble Space Telescope*, obtained at the Space Telescope Science Institute, which is operated by the Association of Universities for Research in Astronomy, Inc. under NASA contract NAS5-2655. M. R. and J. H. acknowledge support from proposal GO-6669, which was provided by NASA through a grant from the STScI. This research has made use of the NASA/IPAC Extragalactic Database, which is operated by the Jet Propulsion Laboratory, California Institute of Technology, under contract with NASA.

APPENDIX A

COMPARISON WITH A DWARF ELLIPTICAL GALAXY IN THE VIRGO CLUSTER

Harris et al. (1998) used the *HST* to image the Virgo Cluster dwarf elliptical galaxy VCC 1104 (= IC 3388). Photometry in the F814W filter was obtained with the WFPC2; it was calibrated with ground-based data, and then an LF was created with a bin size $\Delta I = 0.05$. If we use the same bin size for the old population of the NGC 4038 tail, its LF turns out too noisy, since its CMD contains circa half as many stars as that of VCC 1104. The VCC 1104 LF was then rebinned with $\Delta I = 0.20$, and the counts were multiplied by 0.43. The two LFs are compared in the top panel of Figure 15, where absolute magnitudes were computed assuming $(m - M)_0 = 30.7$ for the Antennae and $(m - M)_0 = 30.98$ and $A_I = 0.04$ for the Virgo dwarf (Harris et al. 1998). The bottom panel shows the LFs after application of the Sobel filter, and both curves have a clear peak at $M_I = -4.2$, although with a large uncertainty.

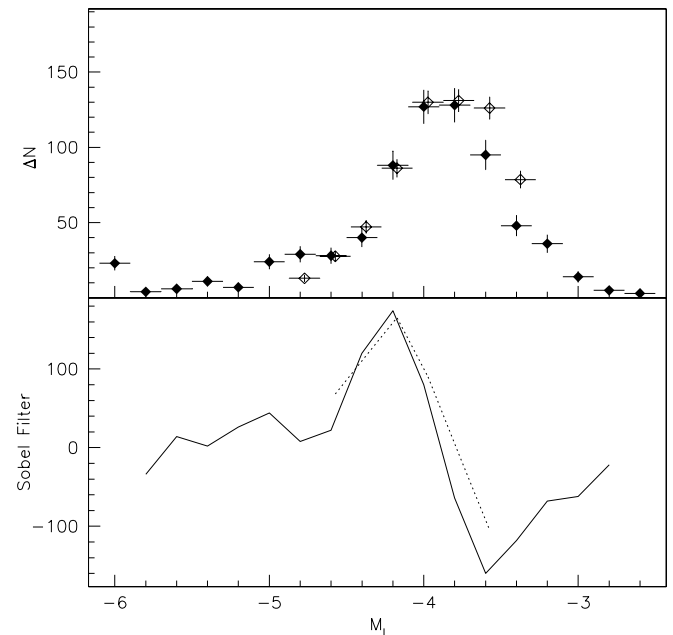


FIG. 15.—Application of the Sobel filter to our Antennae data and to a published data set of comparable S/N give the same results. The *I*-band LF of the faint red stars in the NGC 4038 southern tidal tail (filled diamonds) and that of the Virgo Cluster dwarf elliptical galaxy VCC1104 (open diamonds) are shown in the top panel. The bottom panel shows the LFs after convolution with the Sobel edge-detecting filter, where the NGC 4038 data are shown with a solid curve, and the VCC1104 data are shown as a dotted curve.

The figure shows that the two LFs are strikingly similar for ~ 1 mag down to $M_I \simeq -3.8$, where the incompleteness sets in. Hence, the two underlying populations must be similar as well; i.e., most of the faint red stars of the NGC 4038 tail must be RGB stars.

APPENDIX B

ESTIMATING THE MASS OF YOUNG STARS

B1. ESTIMATES OF THE MASS UNDER THE SSP HYPOTHESIS

We start by comparing the brighter part of the LF with that of a young stellar cluster. Since the template LF must be statistically significant, we turn to the Large Magellanic Cloud (LMC) clusters. One of the youngest LMC clusters for which a LF is available is NGC 2004 (16 Myr, Keller et al. 2000), and its LF is plotted in Figure 13 as open diamonds. The solid line through the points represents a fit to the LF, yielding a slope $\alpha = 0.32 \pm 0.04$. In the following discussion this slope will be used as the template for a simple stellar population. Now, since the two LFs have been formed using the same bins size, they can be compared directly. We fit a power-law of the same exponent to the bright part of our LF (as defined above), and the difference in zero point gives us the scale factor between the NGC 2004 LF and that of our region. The dotted line in the same figure represents the fit, which yields a scale factor of 3.4 ± 1.2 . The error has been estimated by allowing a $\pm 1 \sigma$ variation in the logarithmic zero point. Since the mass of the LMC cluster is $2 \times 10^4 M_\odot$ (Mould et al. 2000), this suggests that our eight associations contain a total of $(6.8 \pm 2.4) \times 10^4 M_\odot$ in young stars

The second way to estimate the mass of a SSP is the following theoretical one. The number of stars in a given mass range m_1 to m_2 on the MS, for a power-law IMF of exponent α , can be expressed as in Renzini (1998):

$$N_{\text{MS}} = \frac{A}{L_T} L_T \int_{m_1}^{m_2} m^\alpha dm,$$

where L_T is the total luminosity of the population, A is a normalization factor, and A/L_T depends on the age of the population. Assuming that our young stellar population can be approximated by a single $\simeq 30$ Myr old burst (the youngest age available in the adopted models), then the computations of Maraston (1998) give $A/L_T \simeq 0.007$ and a mass-to-light ratio $M/L_{\text{bol}} = 0.036$. Now we count $N_{\text{MS}} = 74 \pm 9$ stars from $M_V = -7.7$ down to $M_V = -4.2$, and using the Girardi et al. (2000) isochrones (for $Z = 0.008$), these luminosities can be translated into a mass range from $m_1 = 14 M_\odot$ to $m_2 = 55 M_\odot$. Introducing these numbers into the equation, for a Salpeter (1955) $\alpha = -2.35$ we obtain $L_T = (5.9 \pm 0.7) \times 10^5 L_\odot$, or $M_T = (2.1 \pm 0.2) \times 10^4 M_\odot$ using the quoted M/L .

B2. ESTIMATE OF THE MASS UNDER THE EXTENDED STAR FORMATION HYPOTHESIS

For this estimate, we use the model developed in the next section, which allows us to compute the number of SSPs created per unit time (\dot{n}_{SSP}) during the recent SF history as a function of the slope of the composite LF α_{CSP} , the magnitude interval it spans ΔM_V , and the corresponding time interval. In particular we have $\alpha_{\text{CSP}} = 0.49 \pm 0.05$ (for $23.5 \leq V_0 \leq 26.5$), $\Delta M_V = 3$ mag, and a time interval from 20.6 to 2.5 Myr

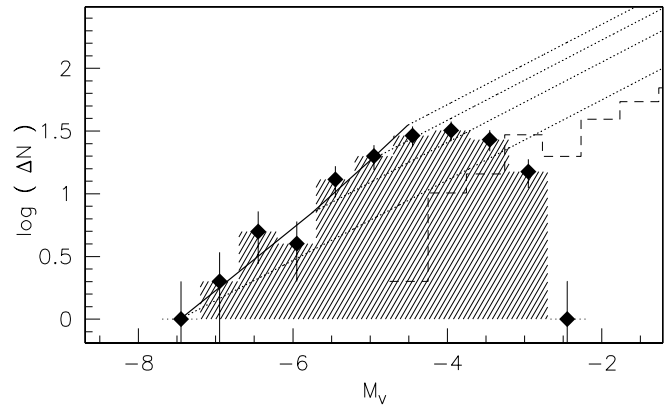


FIG. 16.—The observed LF of the main sequence can be reproduced (*heavy solid line*) with the sum of 3.1 LFs of simple stellar populations (*dotted lines*). We assume that the slope of the single LFs is equal to that of NGC 2004 (*dashed histogram*) and that the simple populations contain a factor 1.7 more stars than the LMC cluster. The populations were generated at a constant rate during 18 Myr, and all stars now evolved off the main sequence were removed from the LFs.

ago. Inserting these values in equation (B2), we find a SSP formation rate of $\dot{n} = 1.7 \pm 0.8 \times 10^{-7}$ SSPs yr^{-1} . Our model LF (*heavy solid line*) is plotted over the LF of the eight associations in Figure 16. The model predicts that 3.1 SSPs were created in ≈ 18 Myr. Of course, we have already shown that stars older than 20.6 Myr (and as old as at least ~ 100 Myr) are also present in the associations, but because of the incompleteness of our photometry, we cannot use the main-sequence LF to probe the older star formation. In Figure 16 the dotted line that reaches $M_V \approx -7.5$ represents the LF of one of the simple stellar populations. Comparing it with that of NGC 2004 (*dashed histogram*), we find that one generation produces $3.4 \times 10^4 M_\odot$, so in terms of mass the past star formation rate was $\dot{M} = (6 \pm 3) \times 10^{-3} M_\odot \text{yr}^{-1}$, and we can finally estimate that $1.1 \times 10^5 M_\odot$ have been produced within the eight associations in the last 20.6 Myr.

We can compare our SF rate with that inferred from the $\text{H}\alpha$ luminosity of the 3 H II regions measured by MDL92. The total luminosity is $\sum L(\text{H}\alpha) = 3.9 \times 10^{39}$ ergs s^{-1} , for their distance of 33.2 Mpc. Using the conversion of Hunter et al. (1986)⁴ and adopting our revised distance of 13.8 ± 1.7 Mpc yields a star formation rate of $\dot{M} = (9.5 \pm 2.5) \times 10^{-3} M_\odot \text{yr}^{-1}$, which is in agreement, within the errors, with our derivation for the eight associations. Note also that a value $\eta = 0.8$ in the Hunter et al. formula would reconcile the star formation rate from the $\text{H}\alpha$ luminosity to our finding. The agreement between the two values is not unexpected, since most of the young stars are contained in the three associations studied by MDL92.

B3. A SIMPLE MODEL OF STAR FORMATION

The purpose of our model is to explain the observed shape of the main-sequence LF in the case of continuous and constant star formation. The model is illustrated by Figure 17, where we assume that such star formation can be approximated by the sum of a discrete number of simple stellar populations (SSPs). Each generation of stars produces a power-law LF, which is added on top of that of the previous generation (*thin solid inclined lines*). As time passes, fainter

⁴ $\dot{M} = 7.07 \times 10^{-42} \eta^{-1} L_{\text{H}\alpha} M_\odot \text{yr}^{-1}$ ($\eta \simeq 0.5$).

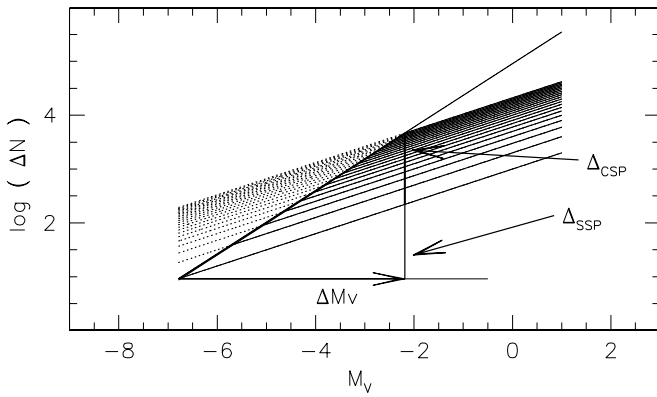


FIG. 17.—Interpreting the LF of a composite stellar population (*heavy solid line*). We assume that it is made by the convolution of several LFs of simple stellar populations (*thin inclined lines*). The single populations are generated at a constant rate \dot{n} , and stars brighter than the termination of the main sequence are removed from the LFs (*dotted lines*). The figure has been obtained for $\dot{n} = 0.21 \text{ Myr}^{-1}$, from 100 Myr to 4 Myr ago. The labels identify parameters that are used in the text to develop our model.

and fainter stars die, so we truncate the single LFs at fainter and fainter magnitudes, with truncation magnitude as a function of time taken from the theoretical isochrones of Girardi et al. (2000). The observed LF (*thick solid line*) will then be the convolution of the LFs of several generations of stars, where the number of generations depends on the star formation efficiency and duration. The slope of the observed LF will be equal to that of a single generation of stars for magnitudes fainter than the current termination of the MS (TMS), while the slope will be larger for magnitudes brighter than the TMS. In this latter range the slope will depend on the number of generations per unit time and on the slope of the single LF.

The previous reasoning can be formalized as follows. We assign variables α_{SSP} and b_{SSP} as the slope and intercept of the single LF in the $M_V, \Delta N$ plane shown in Figure 17. Then let us express the star formation rate as the number of SSPs created in the unit time, \dot{n}_{SSP} . In a given interval Δt , a number of populations $N_{\text{SSP}} = \dot{n}_{\text{SSP}} \Delta t$ are then created. In the absence of stellar deaths the final LF would be a power law of the same initial slope, and the zero point of this composite stellar population would be $b_{\text{CSP}} = b_{\text{SSP}} + \log(N_{\text{SSP}})$. Instead, each LF we add will have a fainter TMS for increasing age, so each LF in

the figure has been truncated at the corresponding M_V^{TMS} for its age. The age is $t = t_{\text{min}} + i \times T_1$, for the i^{th} population, where $T_1 = 1/\dot{n}_{\text{SSP}}$. Now, from Figure 17 we see that the slope of the brightest portion of the LF is $\alpha_{\text{CSP}} = (\Delta_{\text{CSP}} + \Delta_{\text{SSP}})/\Delta M_V$, where Δ_{CSP} , Δ_{SSP} , and ΔM_V are defined in the figure. If we assume that the LFs of all generations have the same slope, then all quantities in the equation can be expressed as functions of that slope, the star formation rate, and the times of the beginning and end of the star formation. Thus, from the equation we can compute the star formation rate.

The horizontal offset is set by the difference between the magnitude of the TMS at the oldest and youngest ages. We found the time dependence of the TMS on the basis of the Girardi et al. (2000) isochrones. After plotting M_V^{TMS} versus $\log t$ for several combinations of metallicity and age intervals, we found that a good approximation is

$$M_V^{\text{TMS}} = 3.29 \log t - 28.51, \quad (\text{B1})$$

which is valid in the interval $6.6 \leq \log t \leq 9.5$ and for metallicities $0.004 \leq Z \leq 0.02$. The 1σ error on the coefficients is 1%, and the rms dispersion of the data around the fit is 0.4 mag. From expression (B1), it follows that $\Delta M_V = 3.29 \log(t_{\text{max}}/t_{\text{min}})$. As shown above, the vertical offset introduced by creating N_{SSP} populations, is $\Delta_{\text{CSP}} = b_{\text{CSP}} - b_{\text{SSP}} = \log N_{\text{SSP}}$, and since $N_{\text{SSP}} = \dot{n}_{\text{SSP}} \Delta t$, it is $\Delta_{\text{CSP}} = \log[\dot{n}_{\text{SSP}}(t_{\text{max}} - t_{\text{min}})]$. Moreover, the vertical offset due to the simple stellar population LF is, of course, $\Delta_{\text{SSP}} = \alpha_{\text{SSP}} \times \Delta M_V = \alpha_{\text{SSP}} \times 3.29 \times \log(t_{\text{max}}/t_{\text{min}})$, where α_{SSP} is the slope of the SSP LF. In conclusion, the expected slope of a composite population that has witnessed continuous star formation from t_{min} to t_{max} , at a rate \dot{n}_{SSP} , is

$$\alpha_{\text{CSP}} = \alpha_{\text{SSP}} + \frac{\Delta_{\text{CSP}}}{\Delta M_V} = \alpha_{\text{SSP}} + \frac{\log[\dot{n}_{\text{SSP}}(t_{\text{max}} - t_{\text{min}})]}{3.29 \log(t_{\text{max}}/t_{\text{min}})}.$$

From this expression we can now obtain the number star formation rate as a function of the observables

$$\log \dot{n}_{\text{SSP}} = (\alpha_{\text{CSP}} - \alpha_{\text{SSP}}) \Delta M_V - \log \Delta t, \quad (\text{B2})$$

where an estimate of $\log \Delta t$ can be obtained from equation (B1) as a function of the observed range in M_V along the LF.

REFERENCES

- Cox, A. N., ed. 1999, *Allen's Astrophysical Quantities* (4th ed.; New York: Springer)
- Barnes, J. E. 1988, *ApJ*, 331, 699
- Barnes, J. E., & Hernquist, L. 1992, *Nature*, 360, 715–717
- Brocato, E., Di Carlo, E., & Menna, G. 2001, *A&A*, 374, 523
- Carretta, E., Gratton, R. G., Clementini, G., & Fusi Pecci, F. 2000, *ApJ*, 533, 215
- Cole, A. A., et al. 1999, *AJ*, 118, 1657
- Da Costa, G. S. 1998, in *Stellar Astrophysics for the Local Group*, ed. A. Aparicio, A. Herrero, & F. Sánchez (Cambridge: Cambridge Univ. Press), 351
- de Vaucouleurs, G. 1958, *AJ*, 63, 253
- de Vaucouleurs, G., de Vaucouleurs, A., & Freeman, K. B. 1968, *MNRAS*, 139, 425
- Dolphin, A. E. 2000, *PASP*, 112, 1397 (D00)
- Duc, P.-A., Brinks, E., Wink, J. E., & Mirabel, I. F. 1997, *A&A*, 326, 537
- Duc, P.-A., & Mirabel, I. F. 1998, *A&A*, 333, 813
- Elmegreen, B. G., & Efremov, Y. N. 1997, *ApJ*, 480, 235
- Fabbiano, G., Zezas, A., & Murray, S. S. 2001, *ApJ*, 554, 1035
- Ferrarese L., et al. 2000, *ApJ*, 529, 745
- Girardi, L., Bressan, A., Bertelli, G., & Chiosi, C. 2000, *A&AS*, 141, 371
- Gordon, S., Koribalski, B., & Jones, K. 2001, *MNRAS*, 326, 578
- Harris, W. E., Durrell, P. R., Pierce, M. J., & Secker, J. 1998, *Nature*, 395, 45
- Hibbard, J. E., van der Hulst, J. M., Barnes, J. E., & Rich, R. M. 2001, *AJ*, 122, 2969
- Holtzman, J. A., et al. 1995, *PASP*, 107, 1065 (H95)
- Hunter, D. A., Gillett, F. C., Gallagher, J. S., Rice, W. L., & Low, F. J. 1986, *ApJ*, 303, 171
- Ibata, R. A. 1999, *ApJS*, 120, 265
- Irwin, M., & Hatzidimitriou, D. 1995, *MNRAS*, 277, 1354
- Jerjen, H., Freeman, K. C., & Binggeli, B. 1998, *AJ*, 116, 2873
- Jog, C. J., & Das, M. 1992, *ApJ*, 400, 476
- . 1996, *ApJ*, 473, 797
- Kauffmann, G., & White, S. D. M. 1993, *MNRAS*, 261, 921
- Keller, S. C., Bessell, M. S., & Da Costa, G. S. 2000, *AJ*, 119, 1748
- Kroupa, P. 1998, *MNRAS*, 300, 200
- Lee, M. G., Freedman, W. L., & Madore, B. F. 1993, *ApJ*, 417, 553
- Lineweaver, C. H., Tenorio, L., Smoot, G. F., Keegstra, P., Banday, A. J., & Lubin, P. 1996, *ApJ*, 470, 38
- Madore, B. F., & Freedman, W. L. 1995, *AJ*, 109, 1645
- Maraston, C. 1998, *MNRAS*, 300, 872
- Mateo, M. 1998, *ARA&A*, 36, 435

- Mirabel, I. F., Dottori, H., & Lutz, D. 1992, *A&A*, 256, L19 (MDL92)
- Mould, J. R., et al. 2000, *ApJ*, 536, 266
- Nikolaev, S., & Weinberg, M. D. 2000, *ApJ*, 542, 804
- Pence, W. D., & de Vaucouleurs, G. 1985, *ApJ*, 298, 560
- Piotto, G., et al. 2002, *A&A*, 391, 945
- Renzini, A. 1998, *AJ*, 115, 2459
- Rozas, M., Zurita, A., Heller, C. H., & Beckman, J. E. 1999, *A&AS*, 135, 145
- Rubin, V. C., Ford, W. K., & D'Odorico, S. 1970, *ApJ*, 160, 801
- Salpeter, E. E. 1955, *ApJ*, 121, 161
- Saviane, I., Held, E. V., & Bertelli, G. 2000, *A&A*, 355, 56
- Saviane, I., Held, E. V., & Piotto, G. 1996, *A&A*, 315, 40
- Saviane, I., Rosenberg, A., Piotto, G., & Aparicio, A. 2003, in *ASP Conf. Ser.*, 296, *New Horizons in Globular Cluster Astronomy*, ed. G. Piotto, G. Meylan, G. Djorgovski, & M. Rieello (San Francisco: ASP), 402
- Schlegel, D. J., Finkbeiner, D. P., & Davis, M. 1998, *ApJ*, 500, 525
- Schweizer, F. 1978, in *Structure and Properties of Nearby Galaxies*, ed. E. M. Berkhuijsen & R. Wielebinski (Dordrecht: Reidel), 279 (S78)
- Stetson, P. B. 1987, *PASP*, 99, 191
- . 1994, *PASP*, 106, 250
- Tonry, J. L., Blakeslee, J. P., Ajhar, E. A., & Dressler, A. 2000, *ApJ*, 530, 625
- Tonry, J. L., Dressler, A., Blakeslee, J. P., Ajhar, E. A., Fletcher, A., Luppino, G. A., Metzger, M. R., & Moore, C. B. 2001, *ApJ*, 546, 681
- Toomre, A., & Toomre, J. 1972, *ApJ*, 178, 623
- Tully, B. 1988, *Nearby Galaxies Catalog* (Cambridge: Cambridge Univ. Press)
- Vacca, W. D., Garmany, C. D., & Shull, J. M. 1996, *ApJ*, 460, 914
- van der Hulst, J. M. 1979, *A&A*, 71, 131
- Whitmore, B. C., Zhang, Q., Leitherer, C., Fall, S. M., Schweizer, F., & Miller, B. W. 1999, *AJ*, 118, 1551
- Wilson, C. D., Scoville, N., Madden, S. C., & Charmandaris, V. 2000, *ApJ*, 542, 120
- Zezas, A., & Fabbiano, G. 2002, *ApJ*, 577, 726
- Zezas, A., Fabbiano, G., Rots, A. H., & Murray, S. S. 2002, *ApJS*, 142, 239
- Zwicky, F. 1956, *Ergeb. Exakten Naturwissen.*, 29, 344

Note added in proof.—Following submission of our paper, *HST* data of NGC 625 have been published in Cannon et al. (2003, *AJ*, 126, 2806). Cannon et al. find the RGB tip at $I_0 = 23.95$, while we find it at $I_0 = 23.9$. Our distance modulus is 0.15 mag larger, mostly because of the difference in the adopted absolute luminosity of the tip. It is also interesting to note that our CMD goes 1 mag deeper along the RGB.