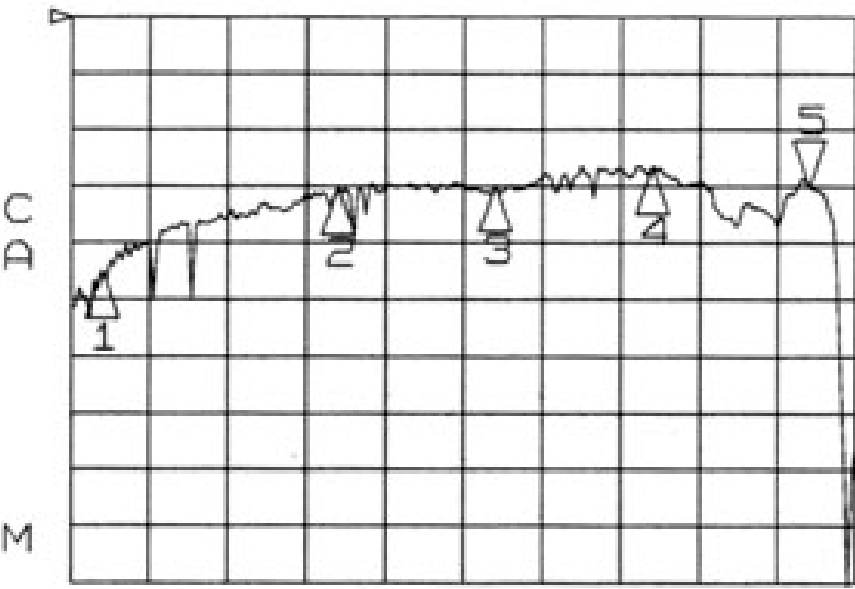


401-3-Reflection

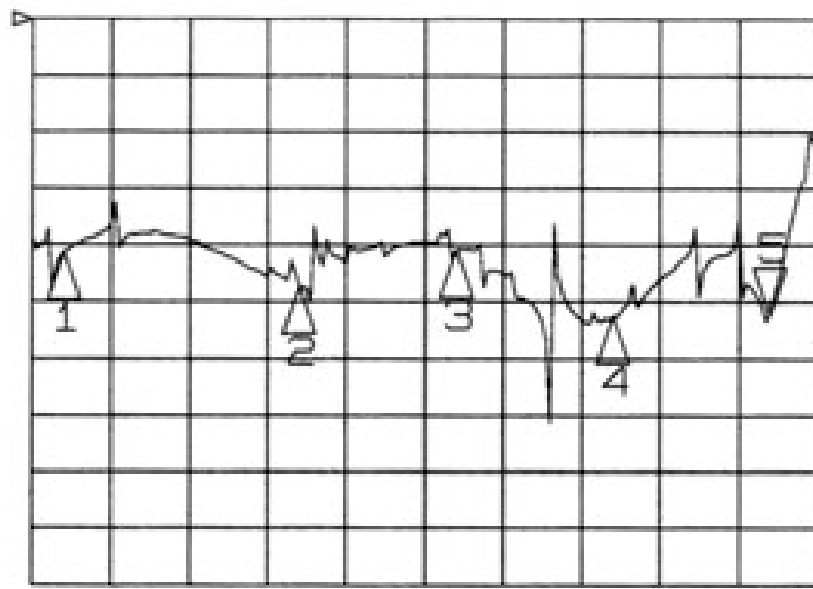
S_{11}
REF 0.0 dB

log MAG
0.2 dB/



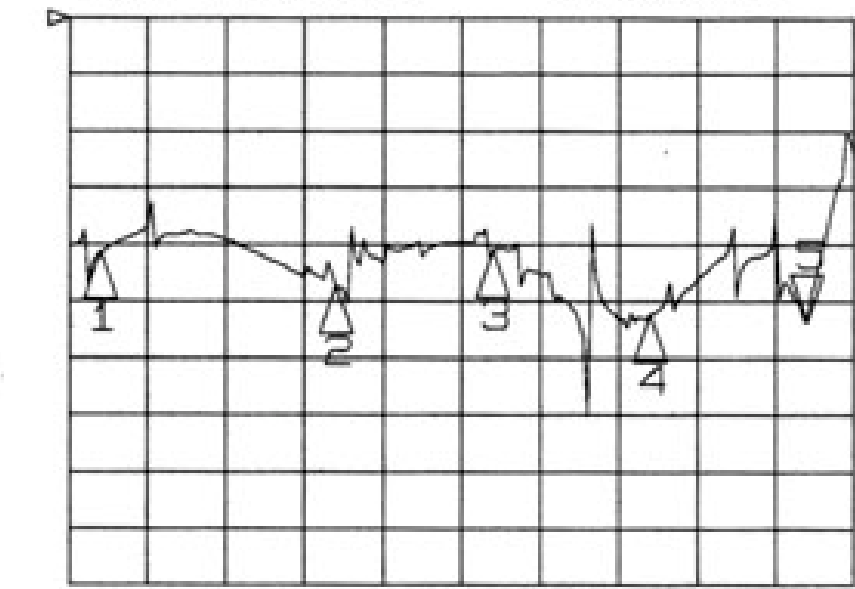
S_{12}
REF 0.0 dB

log MAG
10.0 dB/



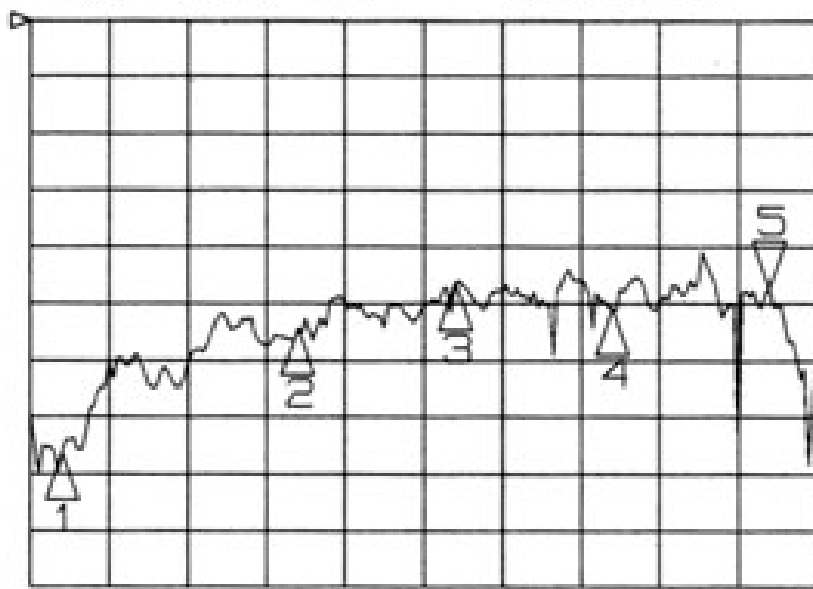
hp
 S_{21}
REF 0.0 dB

log MAG
10.0 dB/



S_{22}
REF 0.0 dB

log MAG
0.2 dB/



- MARKER 1
69.999 GHz
-1.5229 dB

- MARKER 2
84.999 GHz
-1.0851 dB

- MARKER 3
94.999 GHz
-0.9257 dB

- MARKER 4
104.99 GHz
-1.0154 dB

- MARKER 5
114.99 GHz
-0.9436 dB

START 67.999999998 GHz

STOP 117.999999870 GHz

26 OCT 01
10:44:18

401-3-ReturnLoss

S_{11}
REF 0.0 dB

log MAG
5.0 dB/



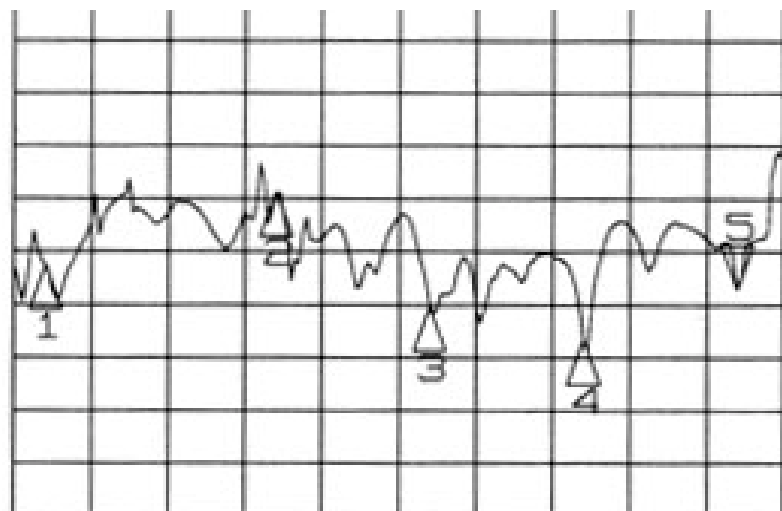
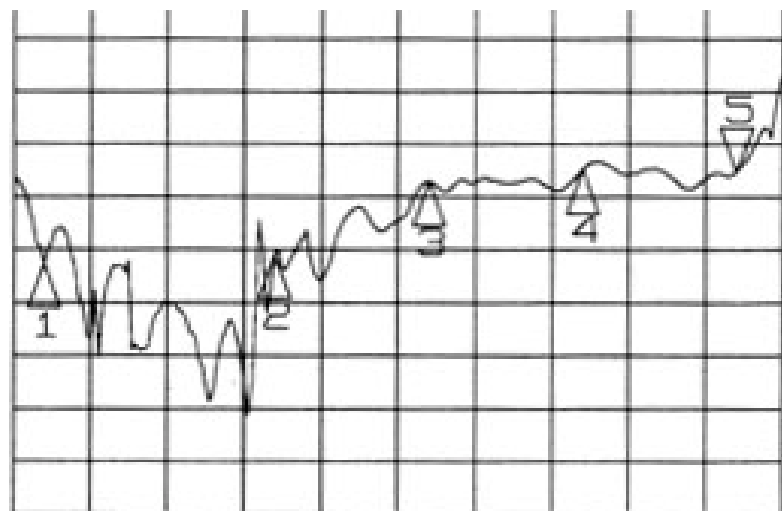
S_{12}
REF 0.0 dB

log MAG
10.0 dB/



MARKER 1
69.999 GHz
-28.251 dB

DC



MARKER 2
84.999 GHz
-47.18 dB

MARKER 3
94.999 GHz
-30.031 dB

M

hp
 S_{21}
REF 0.0 dB

log MAG
10.0 dB/



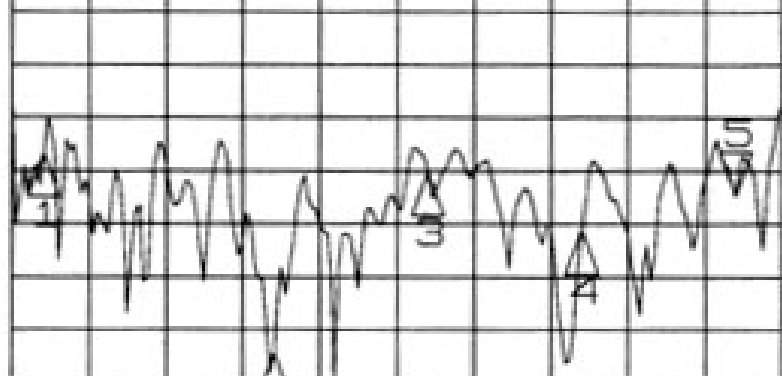
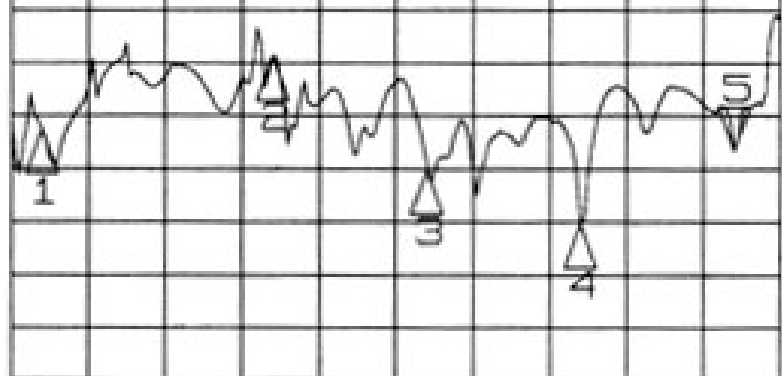
S_{22}
REF 0.0 dB

log MAG
5.0 dB/



MARKER 4
104.99 GHz
-35.582 dB

MARKER 5
114.99 GHz
-32.332 dB



START 67.999999998 GHz

STOP 117.999999870 GHz

26 OCT 01
10:52:43