

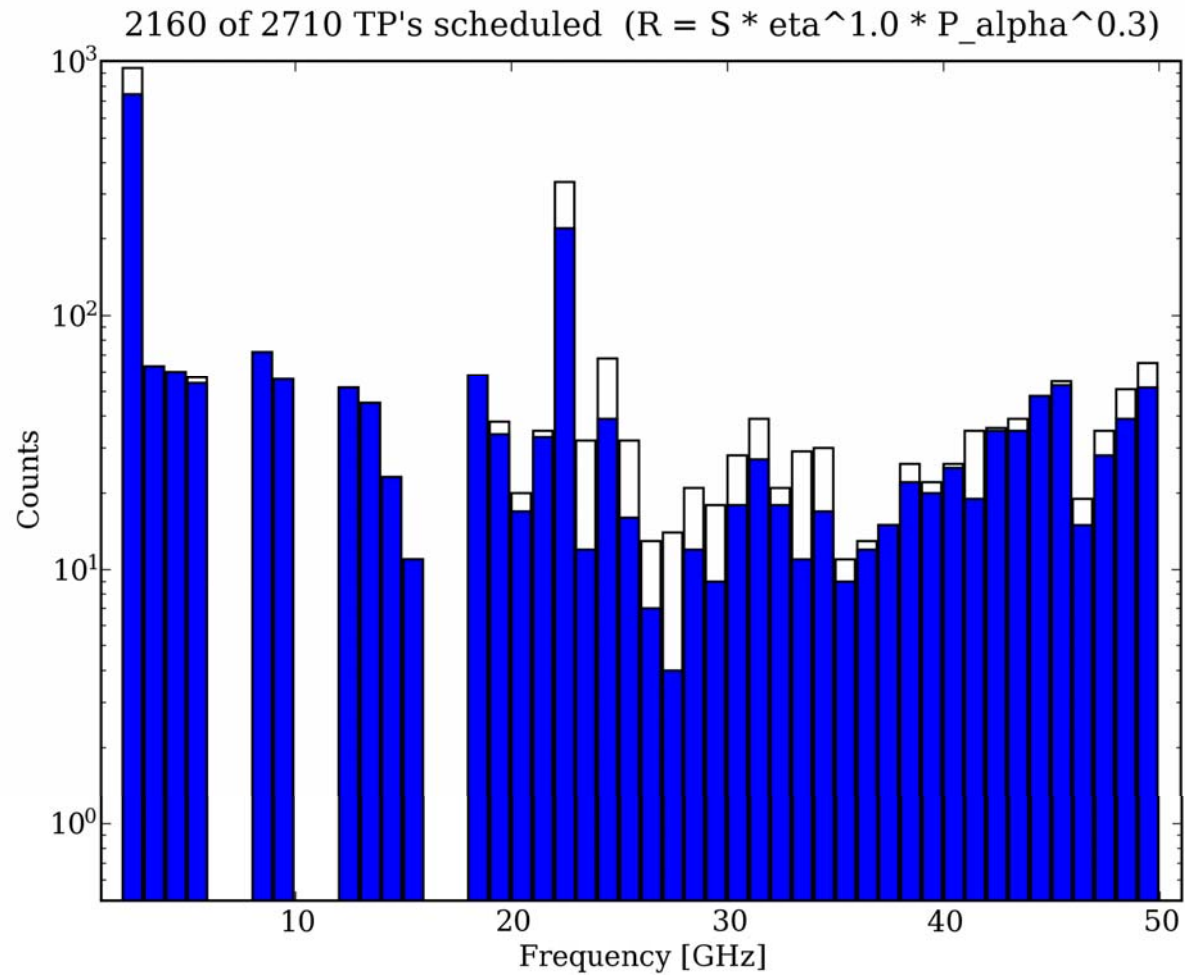


# Dynamic Scheduling Simulations

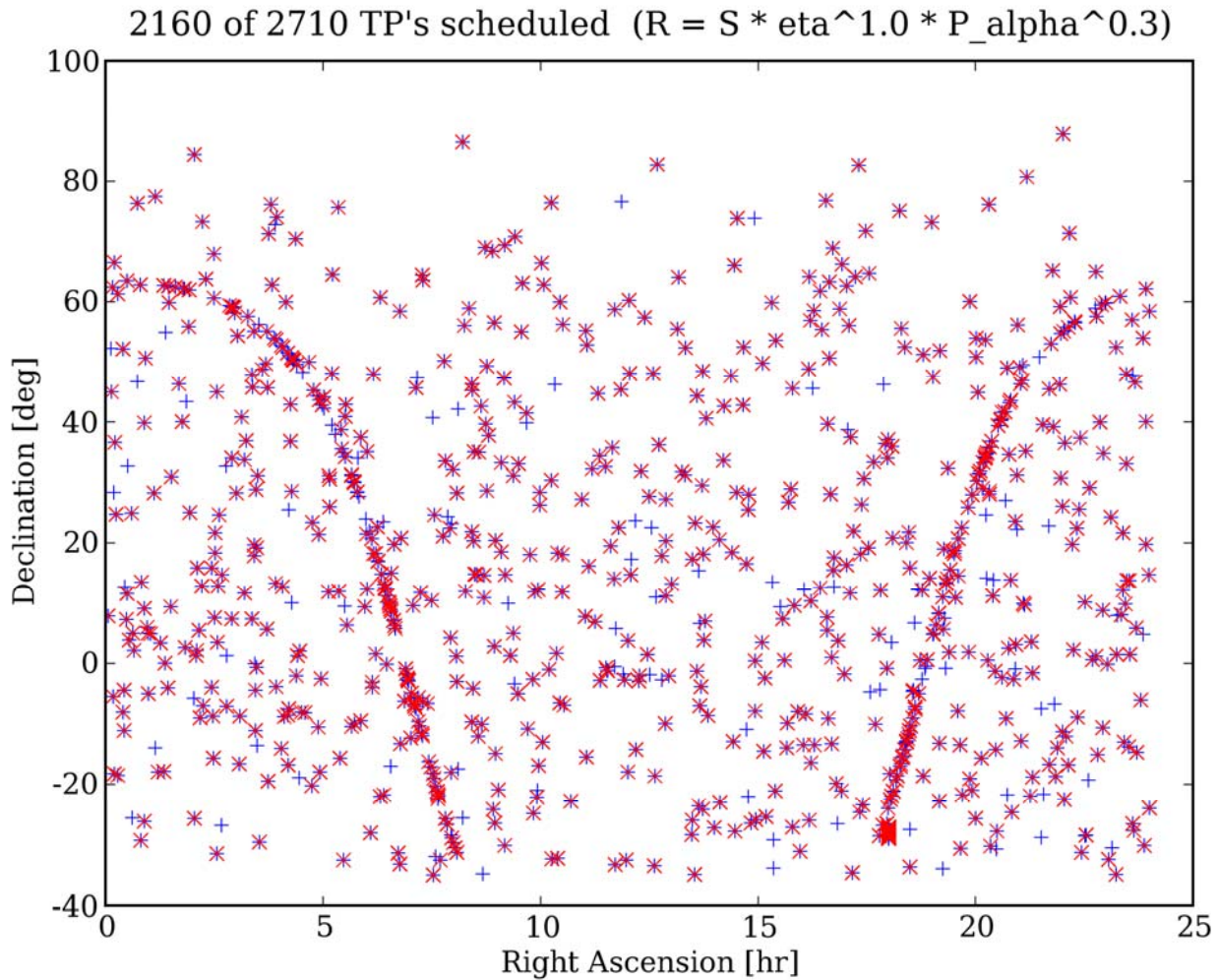
Dana S. Balsler & J.J. Condon



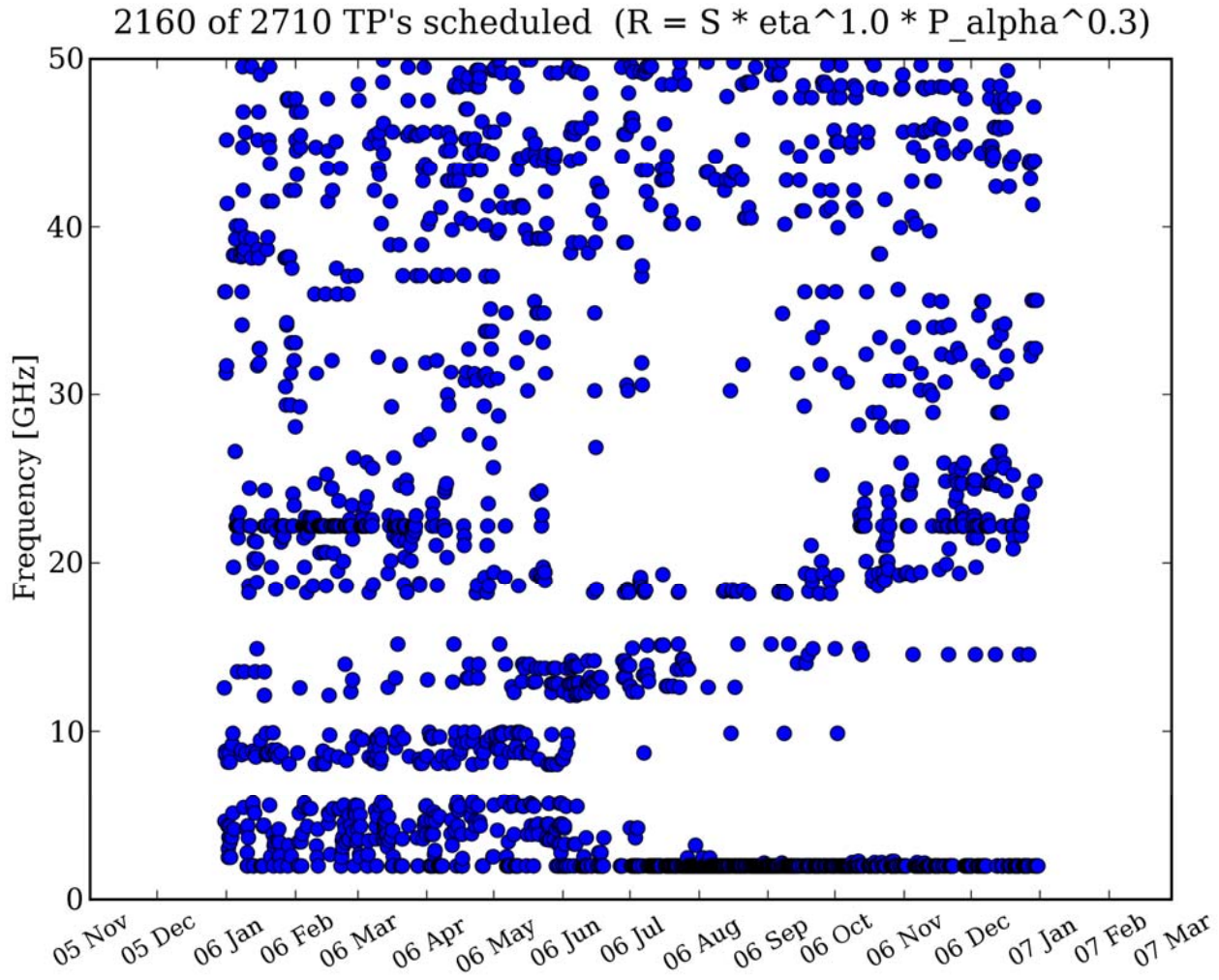
# Frequency Coverage



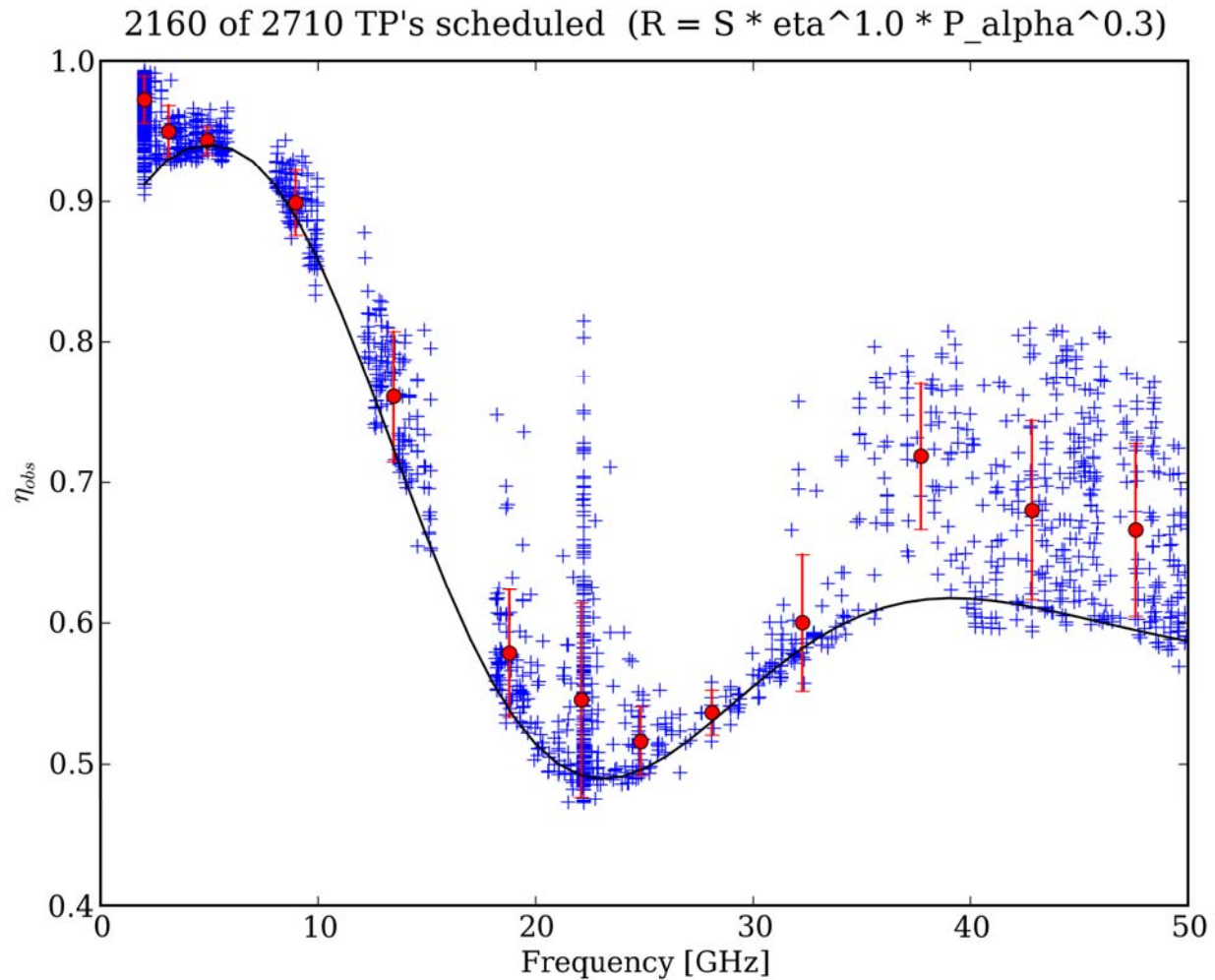
# Sky Coverage



# Frequency History

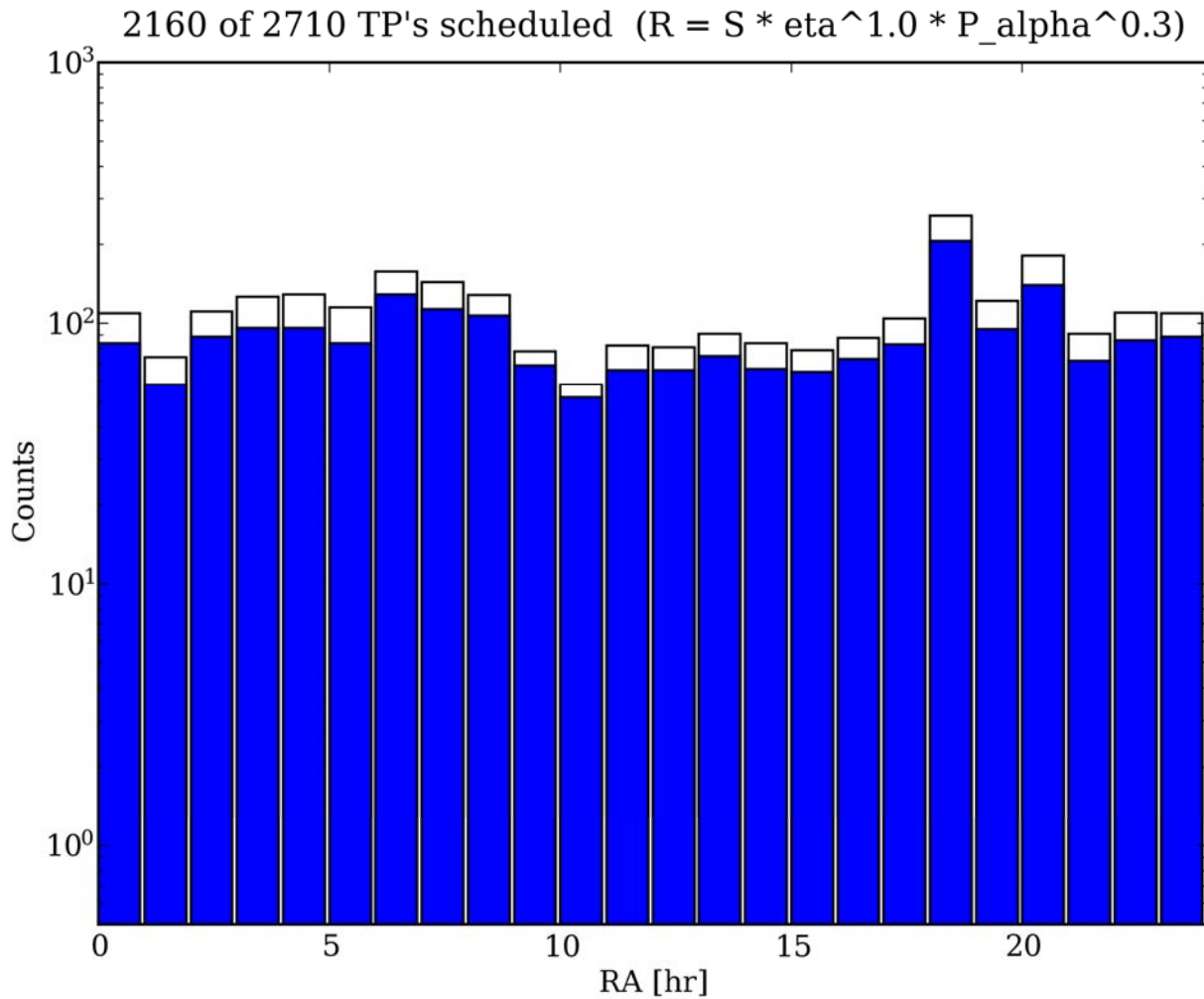


# Observing Efficiency



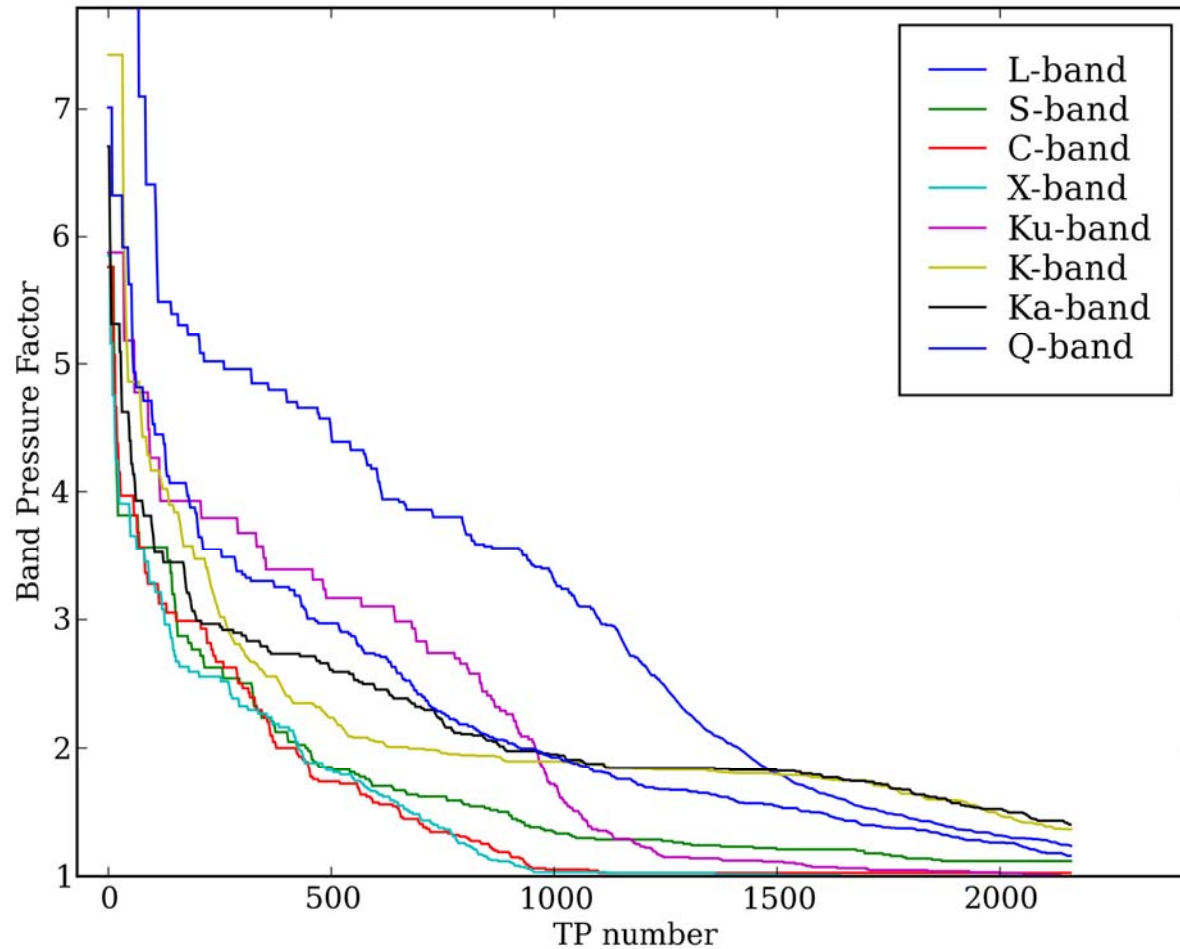


# RA Coverage



# Frequency Band Pressure Factor

2160 of 2710 TP's scheduled ( $R = S * \eta^{1.0} * P_{\alpha}^{0.3}$ )





# Ranking

```
rankTable.txt
Rank  Freq  RA   Dec  El    S    E    P    Vmax  (TP: 99  V:  4.35  Tau22: 0.047  Date: 2006-1-15 22:0:0)
2.72  18.9  1.0  -06.9 43.9  3.08  0.56  1.58  5.58
2.61  18.1  1.8  -16.3 31.8  2.74  0.61  1.55  5.76
2.52   9.9  3.4  -09.0 26.4  1.81  0.90  1.55  7.98
2.42   9.4  2.0  067.0 58.3  1.67  0.93  1.55  8.43
2.38   8.7  2.7  011.8 49.3  1.65  0.93  1.55  8.43
2.35   9.4  2.1  061.7 61.9  1.62  0.93  1.55  8.43
2.34   8.2  2.3  055.5 64.0  1.60  0.95  1.55  8.96
2.31   8.7  2.0  055.7 66.5  1.59  0.93  1.55  8.43
2.31   8.5  2.6  028.8 60.2  1.58  0.95  1.55  8.96
2.27   9.9  1.6  067.2 59.5  1.59  0.92  1.55  7.98

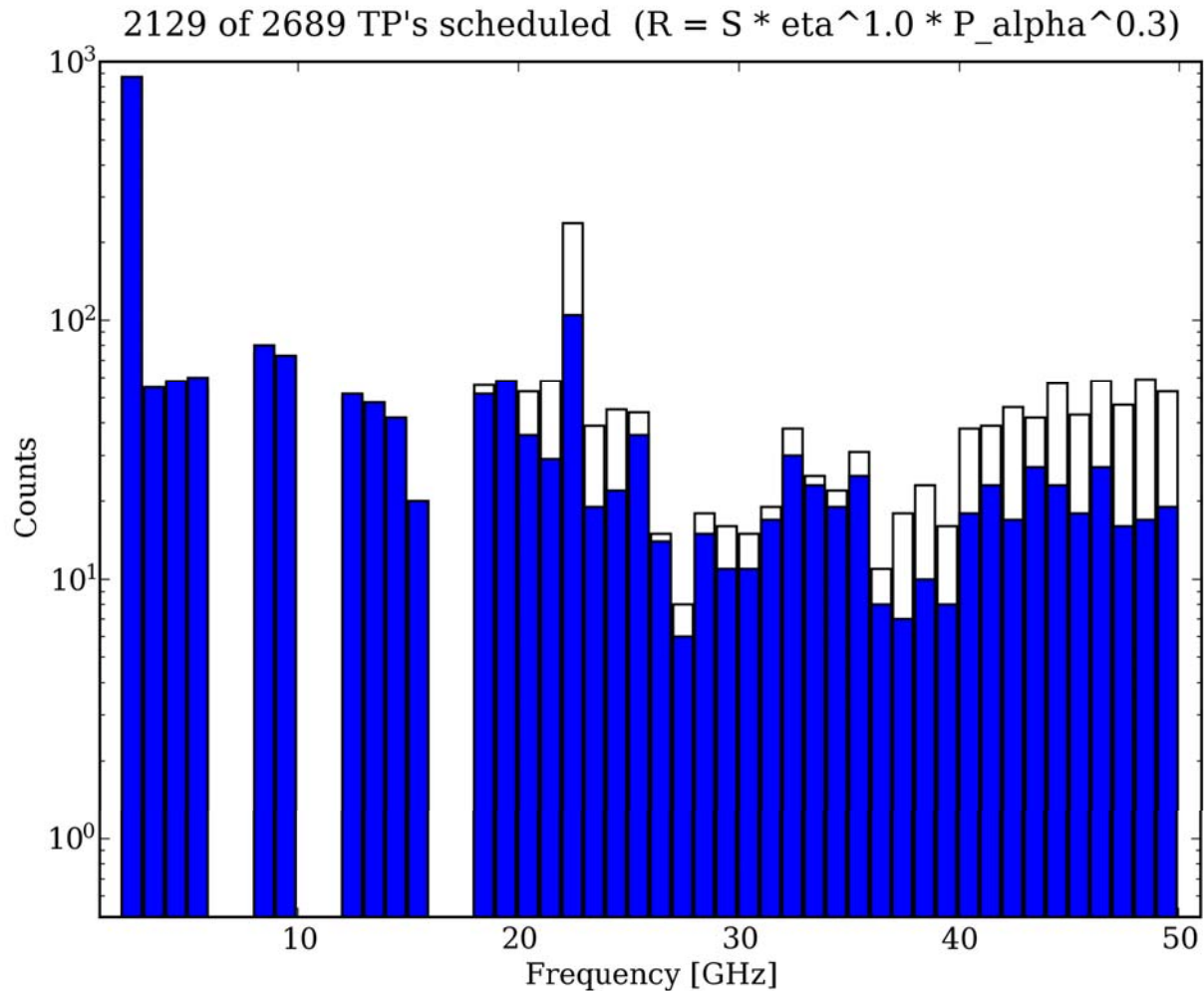
Rank  Freq  RA   Dec  El    S    E    P    Vmax  (TP: 100  V:  0.77  Tau22: 0.041  Date: 2006-1-16 4:0:0)
7.61  37.9  7.0  -04.2 46.5  6.08  0.78  1.60  3.46
7.47  34.8  5.9  -24.2 27.0  6.52  0.75  1.53  3.74
7.25  44.0  7.7  -10.1 38.3  5.92  0.77  1.59  2.87
6.88  39.1  6.3  045.0 83.4  5.38  0.80  1.60  3.36
6.81  47.7  6.9  -00.7 50.3  5.60  0.76  1.60  2.39
6.57  43.2  6.6  008.3 59.7  5.17  0.79  1.60  2.97
6.56  36.8  6.9  018.6 69.0  5.10  0.80  1.60  3.55
6.53  38.2  1.5  062.5 41.0  5.44  0.77  1.55  3.46
6.50  47.1  1.1  075.2 39.8  5.53  0.76  1.55  2.52
6.46  46.9  7.0  016.9 67.1  5.21  0.77  1.60  2.52

Rank  Freq  RA   Dec  El    S    E    P    Vmax  (TP: 101  V:  0.64  Tau22: 0.044  Date: 2006-1-16 7:0:0)
7.72  43.4  9.3  -22.5 29.1  6.76  0.75  1.53  2.97
7.15  37.9  7.0  -04.2 36.1  6.08  0.75  1.57  3.46
```

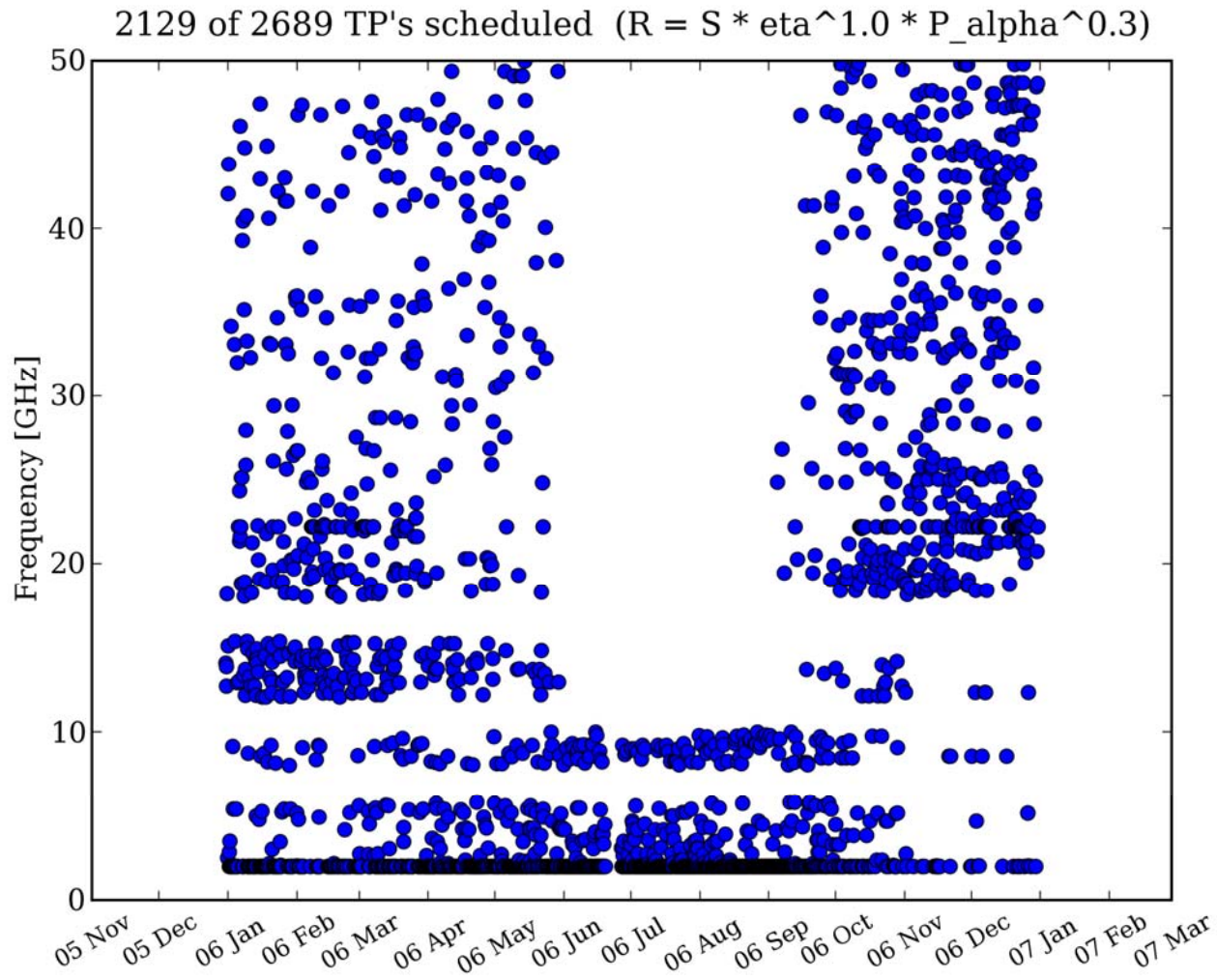
IS08---XEmacs: rankTable.txt 7:09 (Text Fill)---L1197--C0--34%

End

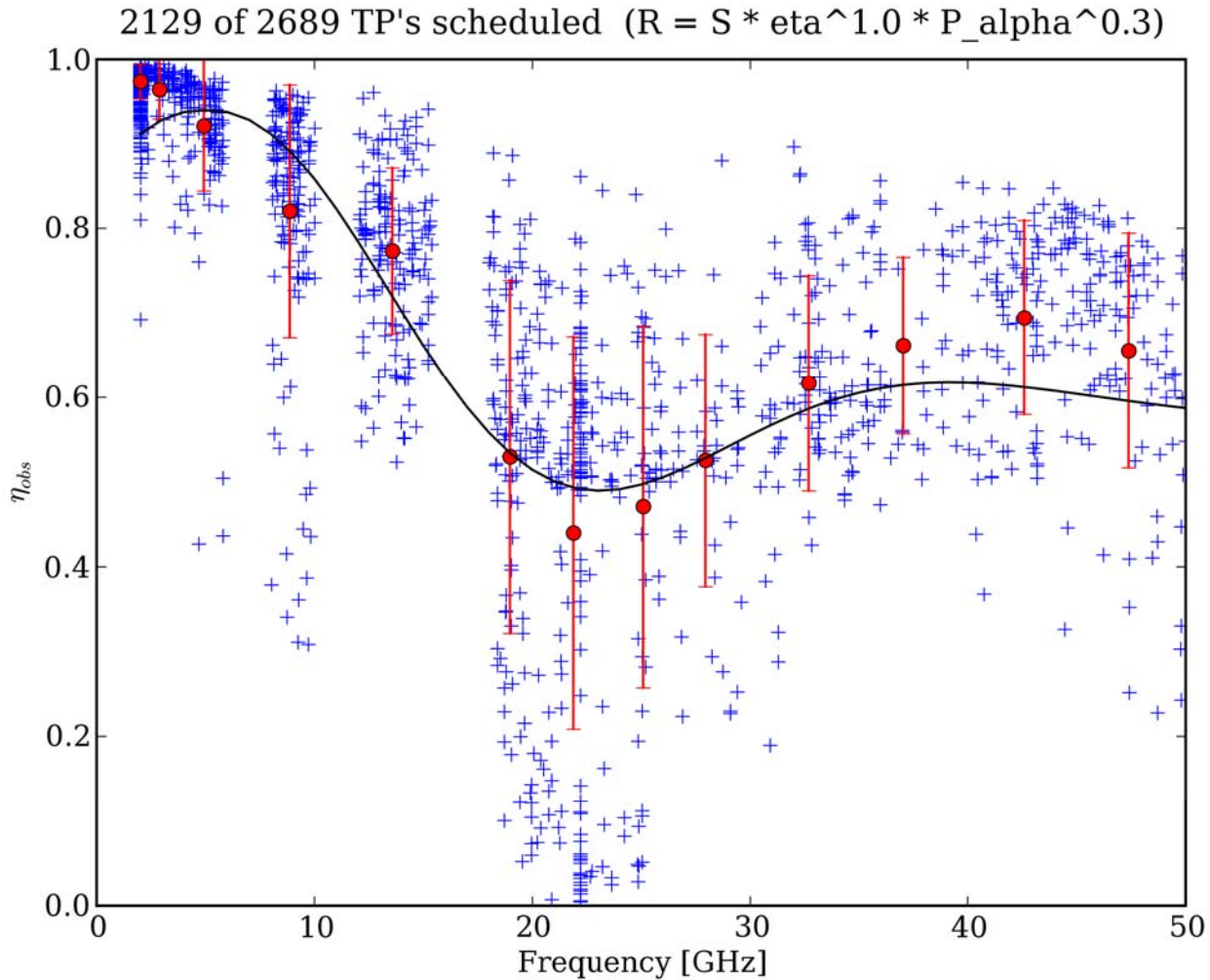
# Frequency Coverage



# Frequency History

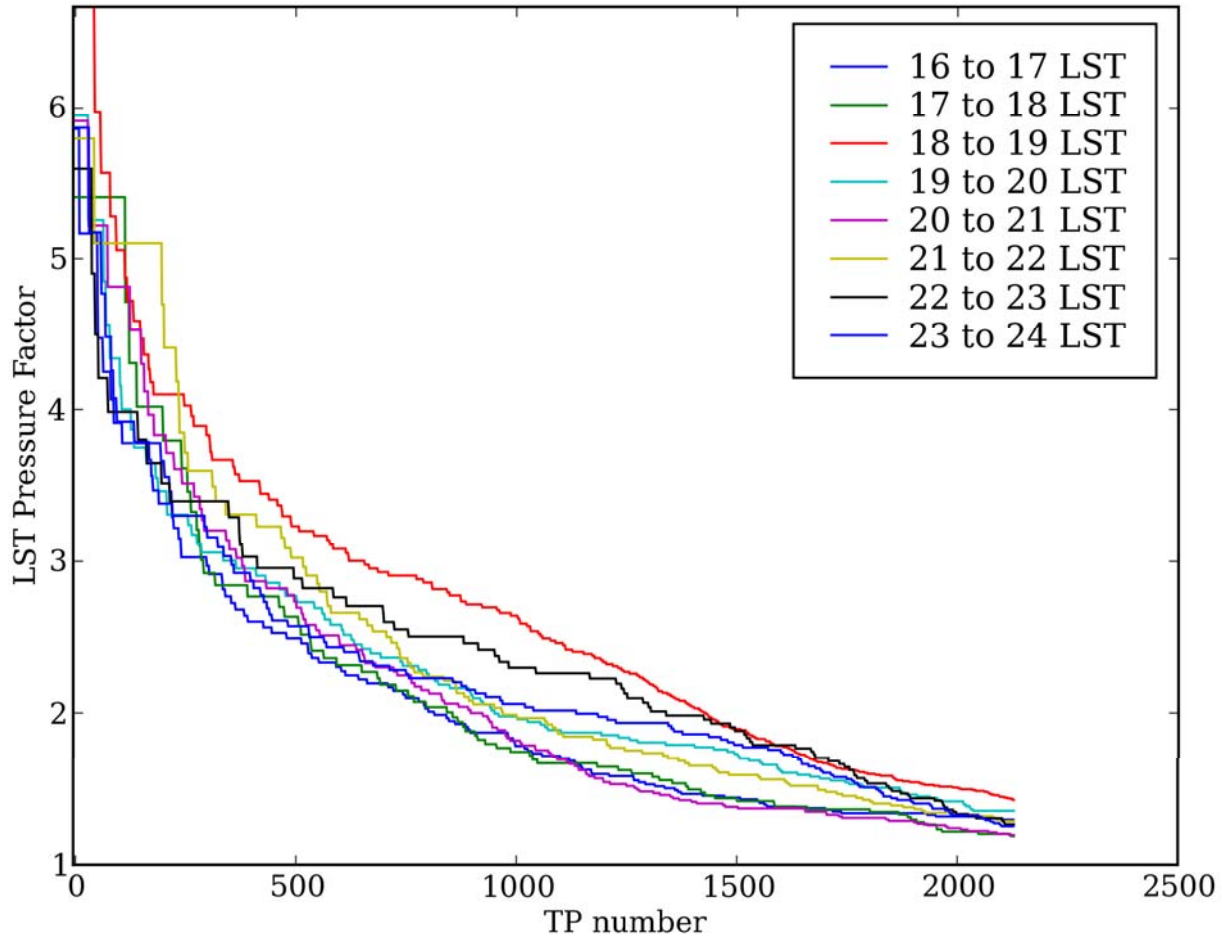


# Observing Efficiency

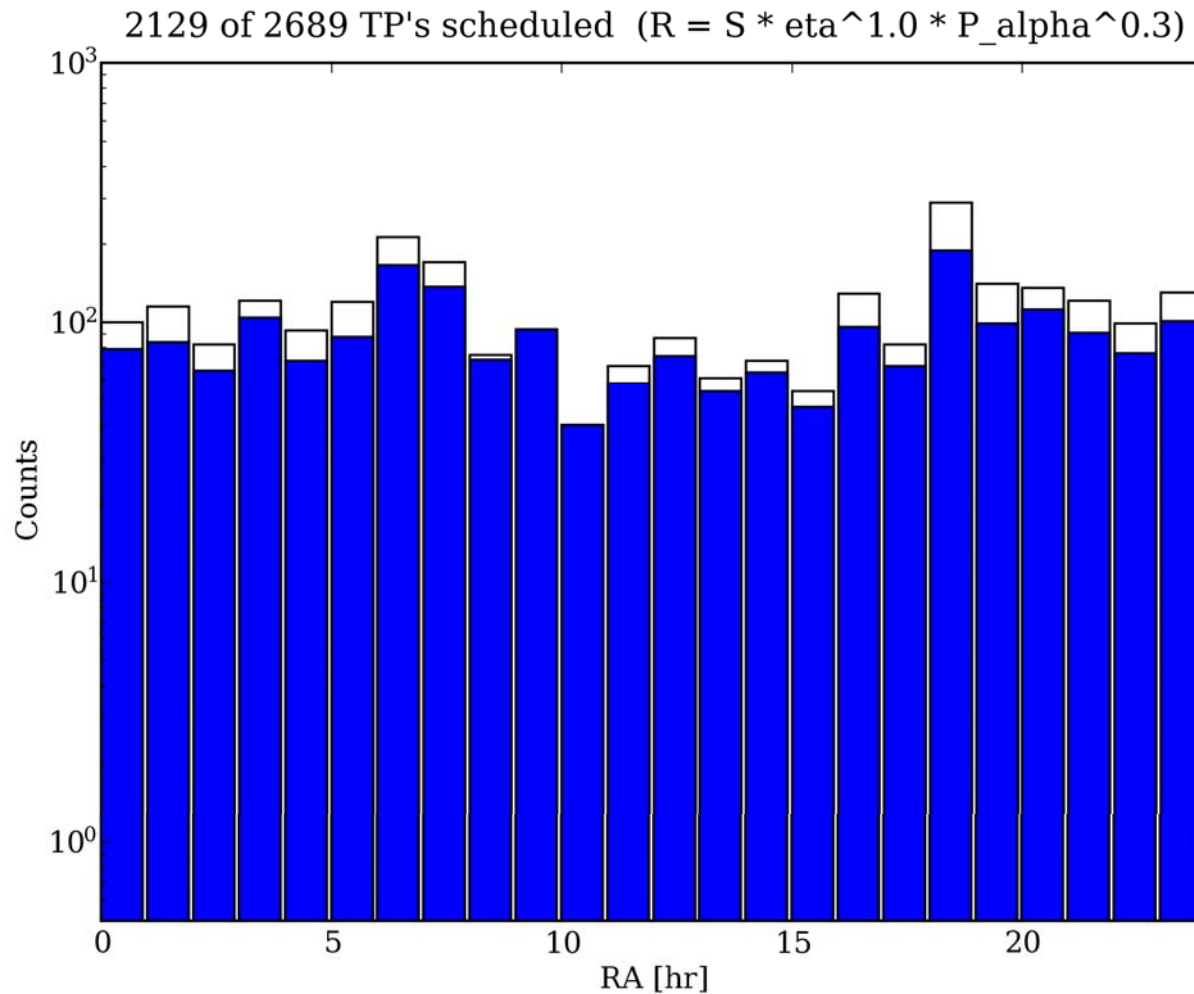


# LST Pressure Factor

2129 of 2689 TP's scheduled ( $R = S * \eta^{1.0} * P_{\alpha}^{0.3}$ )



# RA Coverage



# Frequency Band Pressure Factor

2129 of 2689 TP's scheduled ( $R = S * \eta^{1.0} * P_{\alpha}^{0.3}$ )

