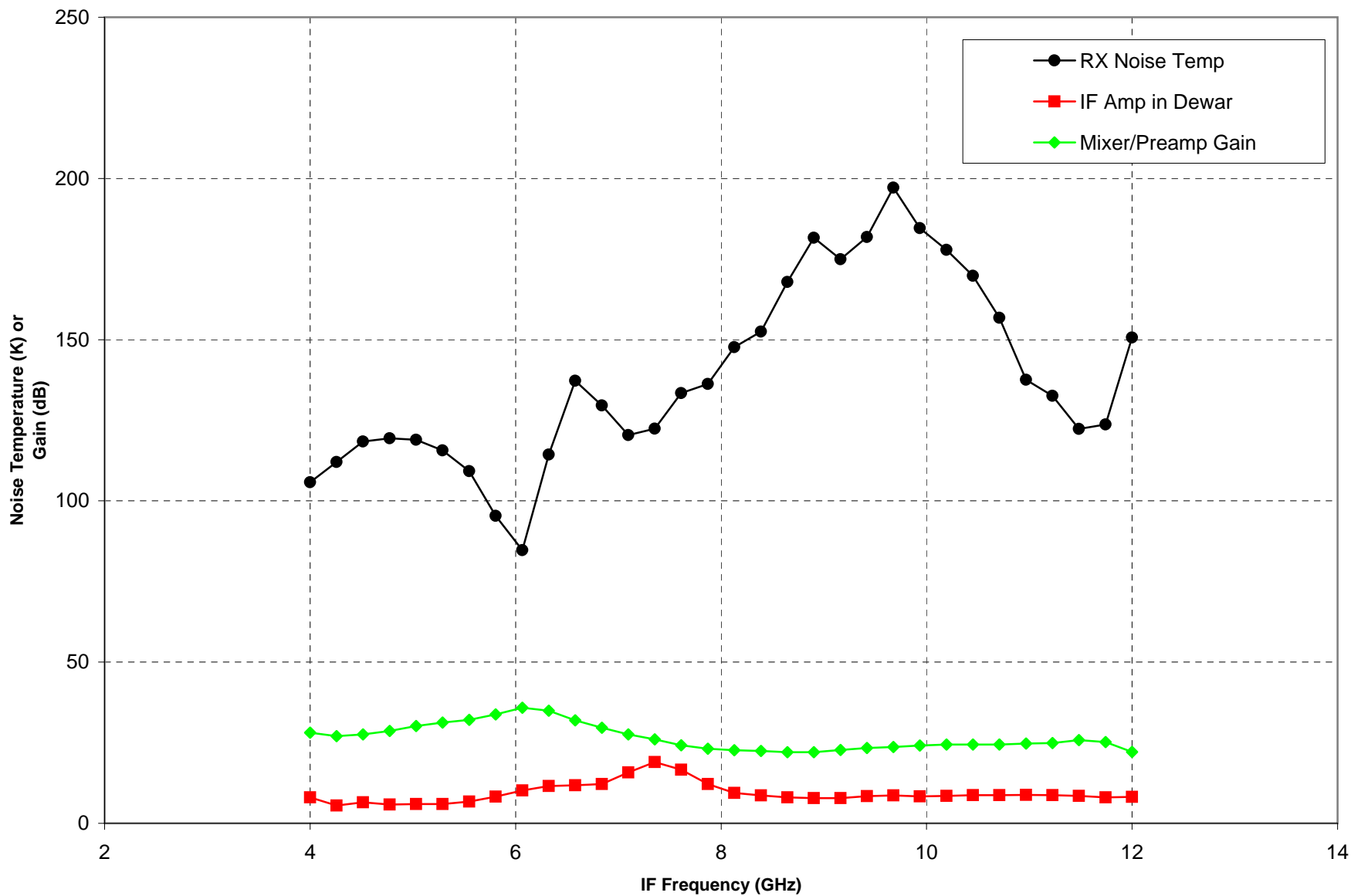
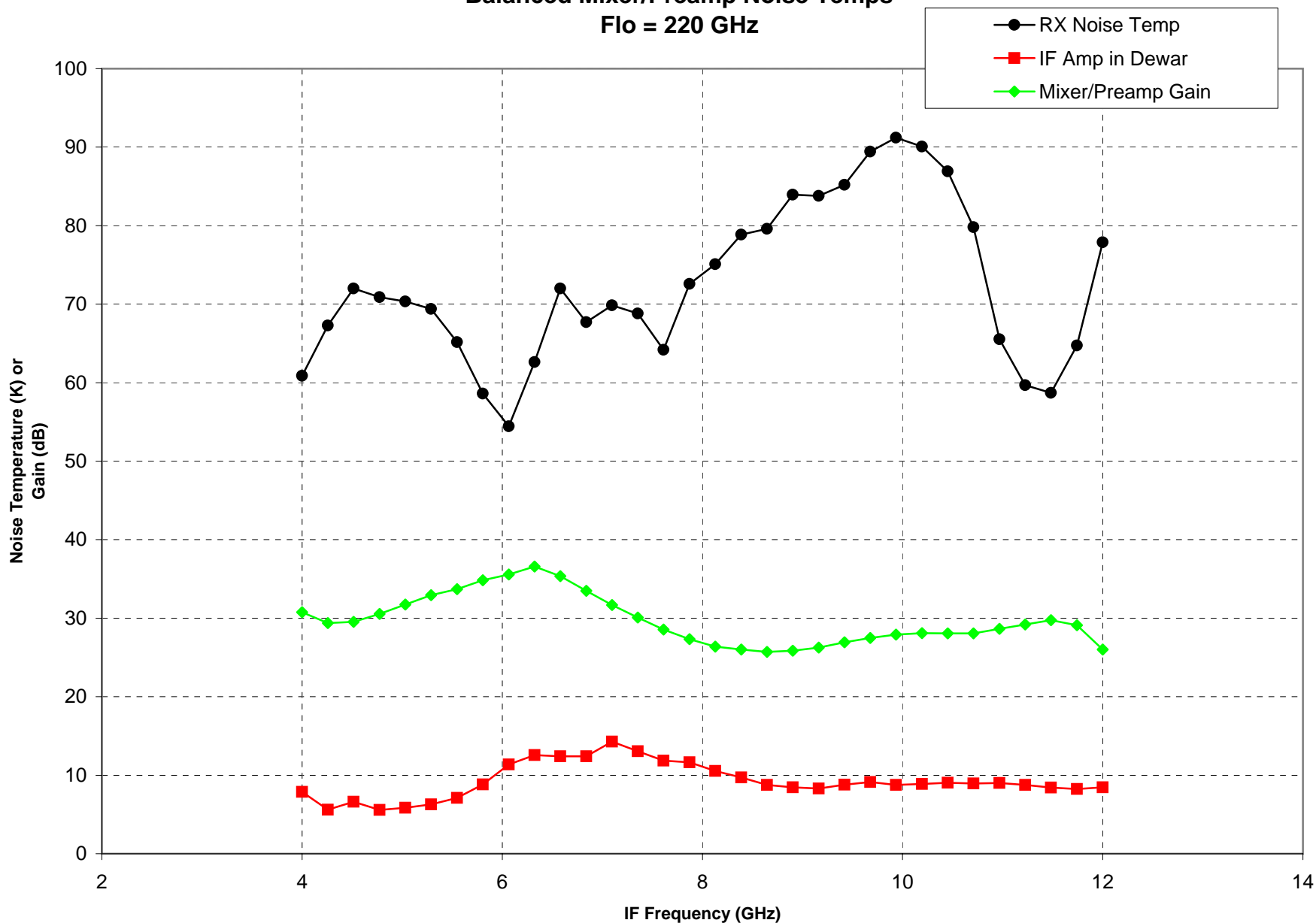


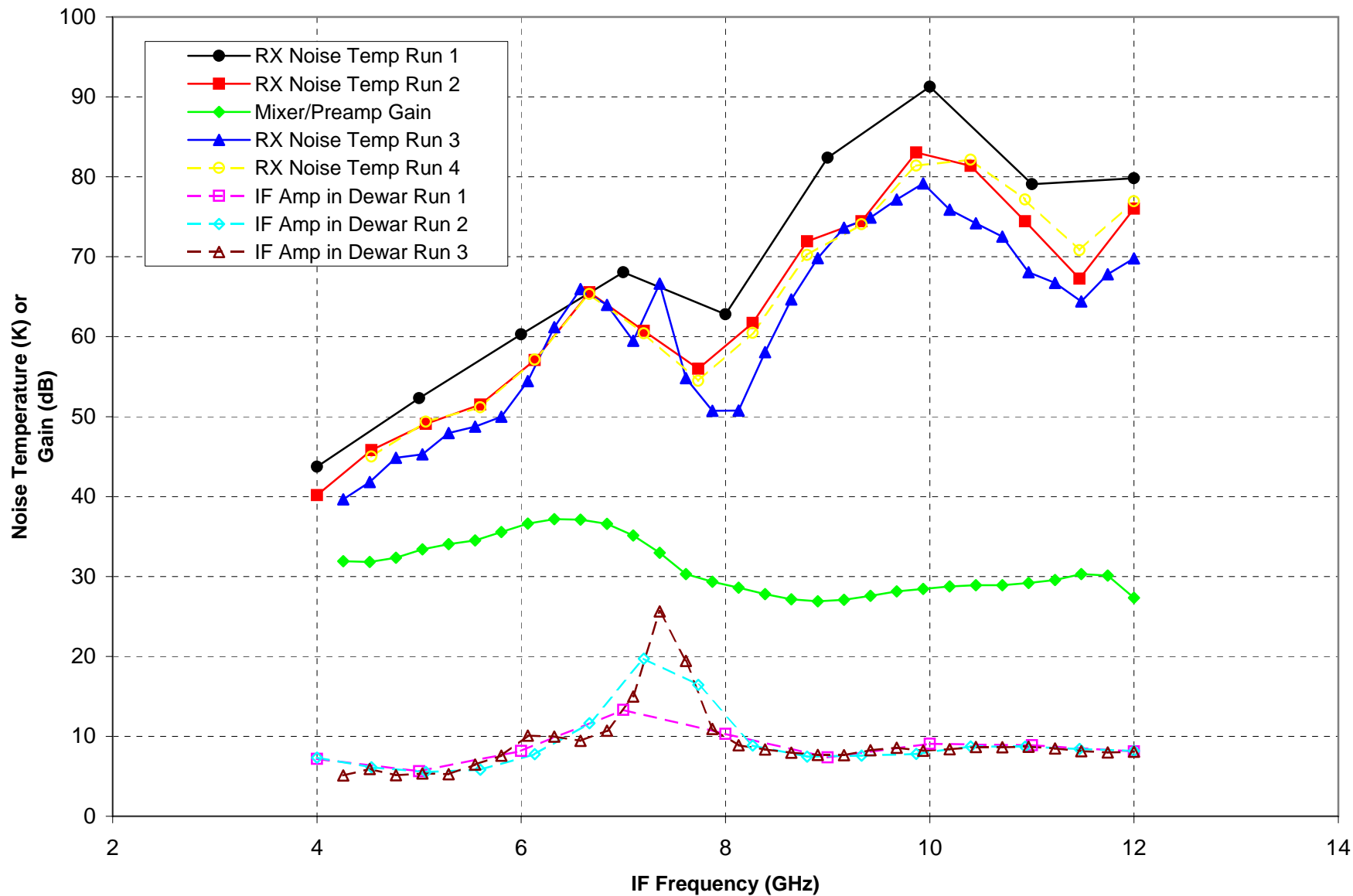
### Balanced Mixer/Preamp Noise Temps Flo = 210 GHz



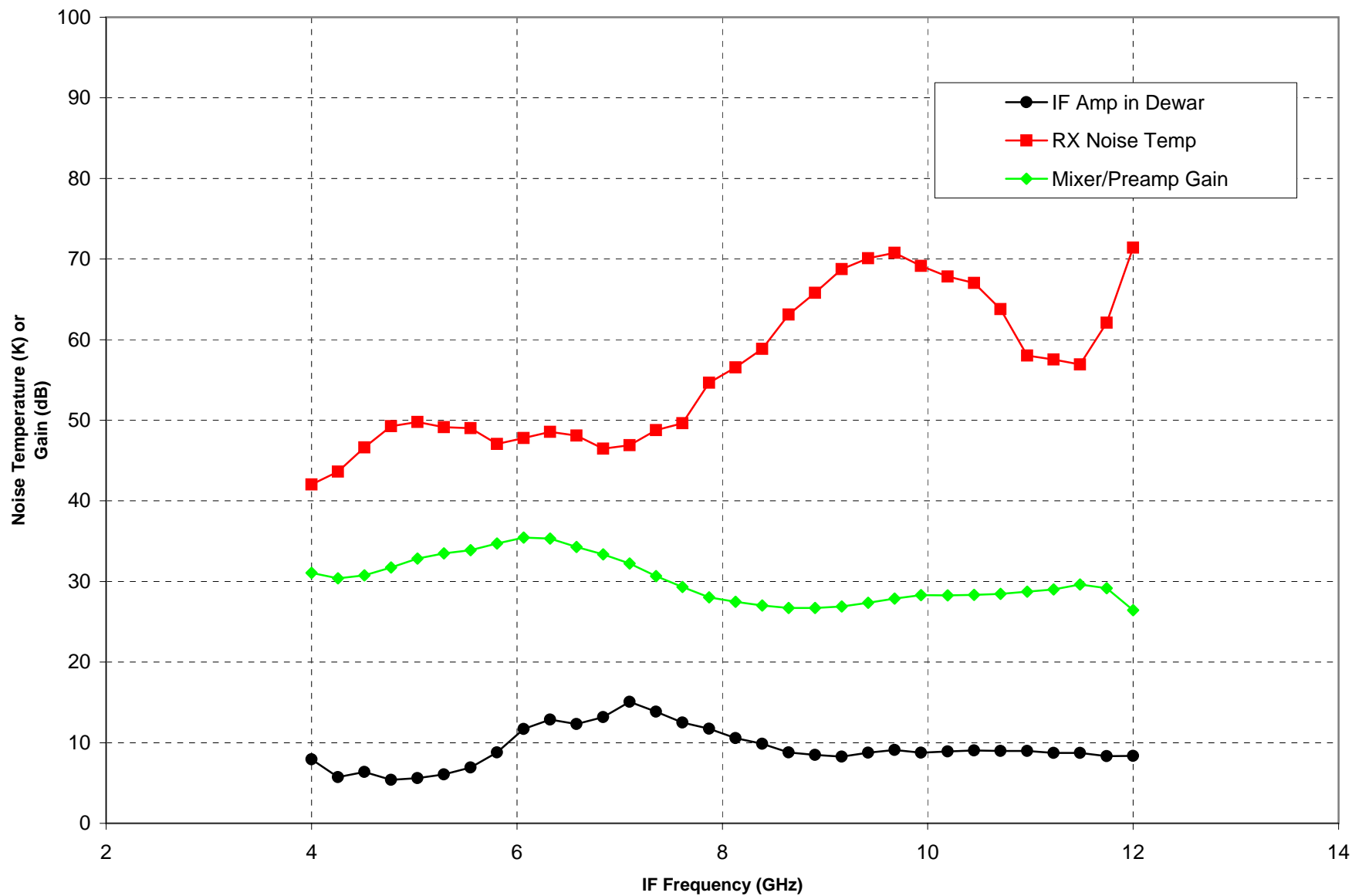
### Balanced Mixer/Preamp Noise Temps Flo = 220 GHz



### Balanced Mixer/Preamp Noise Temps Flo = 230 GHz



### Balanced Mixer/Preamp Noise Temps Flo = 250 GHz



### Balanced Mixer/Preamp Noise Temps Flo = 265 GHz

