



# Memorandum

---

**ik**  
**To:** Deepika Nagaraj Mike Lambeth

**cc:** Michael Lacasse Dave Schmitt Neil Horner Tony Kerr  
Ralph Groves Michael Reynolds Matt Morgan

**From:** John Effland

**Date:** 2008-06-10

**Revs:** 1.0 2008-04-23 jee Initial  
2.0 2008-04-24 jee Added input for initial screen, device selection, changed status screen,  
and removed Add Event screen  
3.1 2008-06-10 jee Updated to align with current Preamp Screen design

**Subject:** Internet Browser Screens to Manage Band 6 Preamp Construction

---

## 1. Introduction

This memo provides updated screens for the browser-based design to manage Band 6 preamps, and attempts to consolidate requirements into a single document, because there are too many e-mails with suggested design enhancements which render it difficult to know exactly what is being designed.

The memo is also written in response to Deepika's latest e-mail of the proposed design, dated Monday, June 09, 2008 2:15 PM, which discussed her latest Internet browser screen, [Figure 1](#). Documents describing previous design versions are available from hyperlinks in the above Rev table.

Screen designs presented here incorporate the fields from tables defined in Ver. 2.4 of the database schema, reproduced in [Figure 5](#).

Finally, note that it is important to distinguish between the preamp status screen, proposed and outlined in [Figure 2](#), and the Add/Modify screens, shown in [Figure 3](#).

### 1.1 Preamp Status Screen

The proposed preamp status screen of [Figure 2](#) includes the following features:

1. Selection of preamp of interest by selecting the serial number from a select box.
2. Modification of attributes of the selected preamp by pressing the `Modify` button.
3. Selecting the mixer to which this preamp attaches using standard nomenclature:

Part of Mixer-preamp [155](#) : [235](#) / [133](#) : 17

where the mating mixer screen is obtained from the 155 hyperlink, and the matched preamp screen from the 133 hyperlink. If no such pairing exists, then the hyperlink is not present.

4. Warm and cold measurement data are available by selecting the appropriate hyperlinks. Note that old measurement data are still available by selecting the appropriate hyperlink in the Events table located at the bottom of the status screen.
5. The HFET wafer and chip parameters are available from the table at the bottom of the screen.
6. The notes table at the bottom of the screen contains notes (entered using the Add/Modify screen) and I have included an example set from our latest mixer shipment to ACC.

Note that no changes can be made to any entries from the status screen. The `MODIFY` button located at the top of the screen must be pressed to add or change information, as described in the next section.

## 1.2 Preamp Add/Modify Screen

Additions and changes to preamp information occur from this screen, shown in [Figure 3](#). The all-important `UPDATE RECORD` button is located at the top of the screen. This screen has the following features:

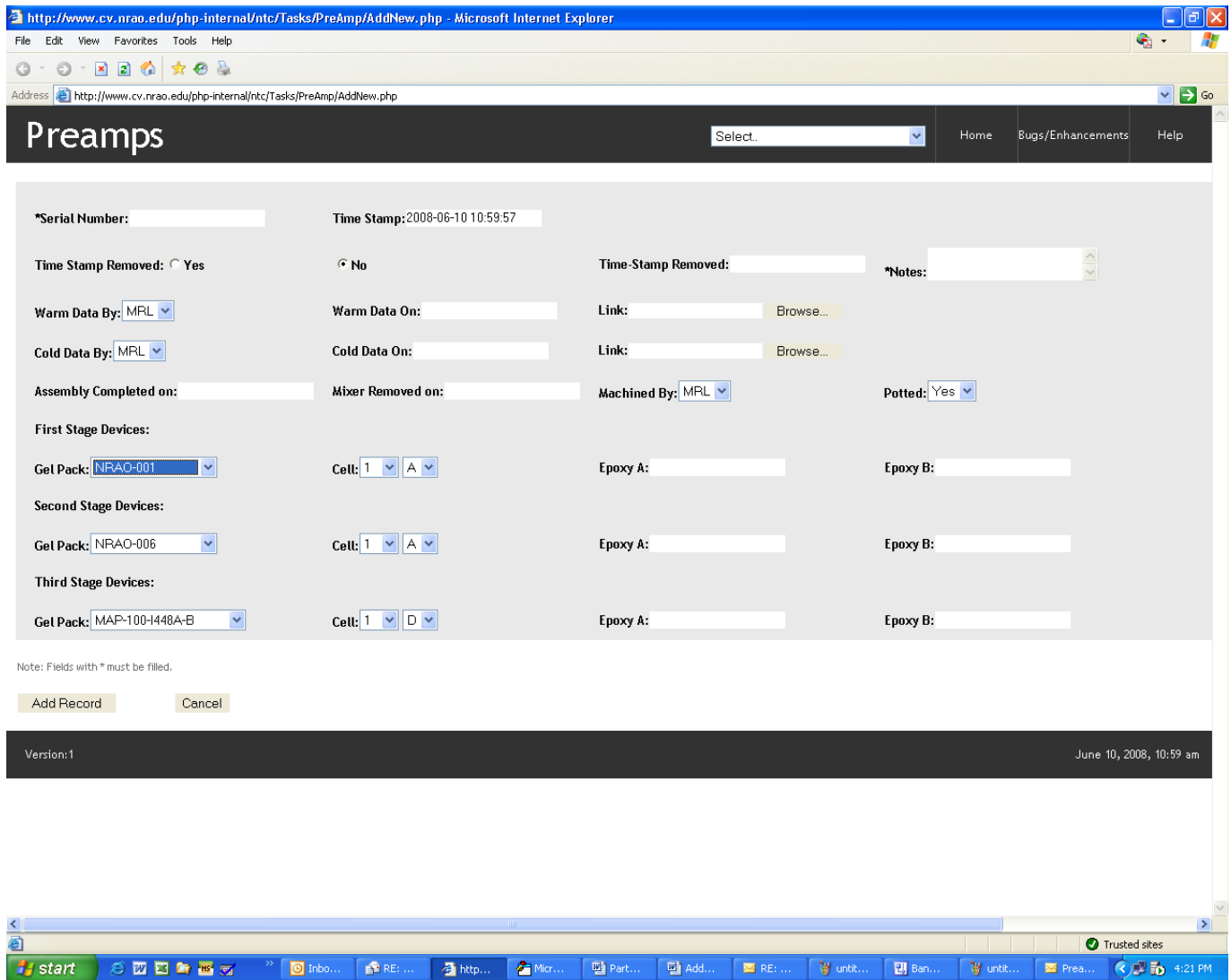
1. Removing a preamp, either from a mixer or from a matched pair, is accomplished by pressing the `REMOVE PREAMP` button, which automatically records the date of removal. The user should probably be forced to enter notes about what is removed.
2. Entering either warm or cold measurement data is accomplished by updating the next two lines, and pressing the `SELECT FILE` button allows the user to choose the Excel data file and path.
3. Entering or modifying HFET wafer data *etc.* is problematical with this approach, because the program won't know if the user has entered any changes unless all the boxes are either blank or already contain the relevant information.
4. Location information about the preamp is entered using the Notes section at the bottom of the screen.

## 1.3 Common Screen Elements

The `BUGS/ENHANCEMENTS` button loads the software bug tracking web page, which will soon be upgraded to allow requests to enhance software in addition to tracking bugs. A `HELP` button loads an HTML help file.

[Table 1](#) and [Figure 4](#) describe the common drop-down box located at the top of each page.

Figure 1: Proposed Update Screen from Nagaraj, dated Monday, June 09, 2008 2:15 PM



**Figure 2: Proposed Preamp Status Screen**

| Preamps           |                   | Modify                                    |                      | Select.   | Home          | Bugs/Enhancements | Help                    |
|-------------------|-------------------|---|----------------------|---|---------------|-------------------|-------------------------|
| Serial #          | 235               | Part of Mixer-preamp 155 : 235 / 133 : 17 |                      | Location:   | Desiccator    | on                | 2008-04-24 09:45        |
| Warm Data on:     |                   | 2008-04-24 09:45                          | by:                  | ML  | Cold Data on: |                   | 2008-04-24 09:45 by: ML |
| Stage             | Gel-Pack          | Cell                                      | Epoxy A              | Epoxy B   |               |                   |                         |
| 1st               | NRAO-001          | A10                                       | PB012345             | PB135673  |               |                   |                         |
| 2nd               | NRAO-006          | D4  | PB112345             | PB112345  |               |                   |                         |
| 3rd               | MAP-100-2006-09-A | J2  | PB112345             | PB112344  |               |                   |                         |
| Events            |                   |   |                      |   |               |                   |                         |
| Date <sup>1</sup> | Location          | Who                                       | Data                 | Notes   |               |                   |                         |
| 2008-06-11 23:22  | Desiccator        | ML  | <a href="#">Link</a> | Preamp installed in mixer block   |               |                   |                         |
| 2008-06-11 23:22  | Desiccator        | ML  | <a href="#">Link</a> | Preamp matched with another   |               |                   |                         |
| 2008-06-11 23:22  | ATS               | ML  | <a href="#">Link</a> | This preamp was measured cold today but the ATS has temperature problems<br>h h h h h |               |                   |                         |
| 2008-06-11 23:22  | Mxr Assm Lab      | ML  |                      | Warm tested   |               |                   |                         |
| 2008-06-11 23:22  | Mxr Assm Lab      | ML  |                      | Active devices installed  |               |                   |                         |
| 2008-06-11 23:22  | Mxr Assm Lab      | RG  |                      | Blocks received from ACC - passive components inserted                                |               |                   |                         |
| 2008-06-11 23:22  | ACC               | RG  |                      | Blocks returned to ACC  |               |                   |                         |
| 2008-06-11 23:22  | Mxr Assm Lab      | MR  |                      | Screw holes cleaned out   |               |                   |                         |
| 2008-06-11 23:22  | Mxr Assm Lab      | ML  |                      | ACC returned block, can't fit screws in lids  |               |                   |                         |
| 2008-06-11 23:22  | ACC               | RG  |                      | Preamps shipped to ACC  |               |                   |                         |
| 2008-06-11 23:22  | Mxr Assm Lab      | RG  |                      | Blocks given to Gerry today to be plated  |               |                   |                         |

<sup>1</sup> Events are ordered chronologically with most recent at top.

|                  |              |    |  |                            |
|------------------|--------------|----|--|----------------------------|
| 2008-06-11 23:22 | Mxr Assm Lab | RG |  | Blocks cleaned for plating |
| 2008-06-11 23:22 | Mxr Assm Lab | RG |  | Blocks received from shop. |

**Figure 3: Add / Modify Preamp Screen**

|                                  |                                       |  |   |  |                                   |                      |
|----------------------------------|---------------------------------------|--|---|--|-----------------------------------|----------------------|
| <b>Add/ Modify Preamps</b>       |                                       | <input type="button" value="Update Record"/> | <input type="text" value="Select.."/>         | <a href="#">Home</a>                       | <a href="#">Bugs/Enhancements</a> | <a href="#">Help</a> |
| Serial #:                        | <input type="text" value="235"/>      | <input type="button" value="Remove Preamp"/> |   |  |                                   |                      |
| Warm data by:                    | <input type="text" value="ML"/>       | Warm data on:                                | <input type="text" value="2008-04-24 09:45"/> | <input type="button" value="Select File"/> |                                   |                      |
| Cold data by:                    | <input type="text" value="ML"/>       | Cold data on:                                | <input type="text" value="2008-04-24 09:45"/> | <input type="button" value="Select File"/> |                                   |                      |
| <b>Stage</b>                     | <b>Gel-Pack</b>                       | <b>Cell</b>                                  |   | <b>Epoxy A</b>                             | <b>Epoxy B</b>                    |                      |
| 1st                              | <input type="text" value="NRAO-001"/> | <input type="text" value="1"/>               | <input type="text" value="1A"/>               | <input type="text"/>                       | <input type="text"/>              |                      |
| 2nd                              | <input type="text" value="NRAO-001"/> | <input type="text" value="1"/>               | <input type="text" value="1A"/>               | <input type="text"/>                       | <input type="text"/>              |                      |
| 3rd                              | <input type="text" value="NRAO-001"/> | <input type="text" value="1"/>               | <input type="text" value="1A"/>               | <input type="text"/>                       | <input type="text"/>              |                      |
| <b>Enter Notes</b>               |                                       |  |   |  |                                   |                      |
| <b>Location</b>                  | <b>Who</b>                            | <b>Data</b>                                  | <b>Notes</b>                                  |  |                                   |                      |
| <input type="text" value="ACC"/> | <input type="text" value="ML"/>       | <a href="#">Link</a>                         | <input type="text" value="Type notes here"/>  |  |                                   |                      |

| Table 1: Items in view ALL Drop-Down Screen |                                  |
|---|----------------------------------|
| Item Text                                   | Action when selected...links to  |
| View All                                    | list all preamps in database     |
| View New                                    | list all preamps with no entries |
| -----                                       | divider                          |
| Account Nums                                | Band 6 account number web page   |
| Bugs  | Software bug tracking web page   |
| Leave Schedule                              | NTC leave schedule               |
| Phone Book                                  | NRAO phone book                  |
| Plating Jobs                                | NTC Plating job listing          |
| NTC Tasks                                   | NTC task web page                |
| NTC Conf Room Sched                         | Conference room schedule         |
| NTC Penthouse Sched                         | Penthouse schedule               |
| Tasks Database                              | Band 6 task database web page    |
| Shop Jobs                                   | NTC machine shop job listing     |

Figure 4: Sample drop-down box from Band 6 Tasks Software

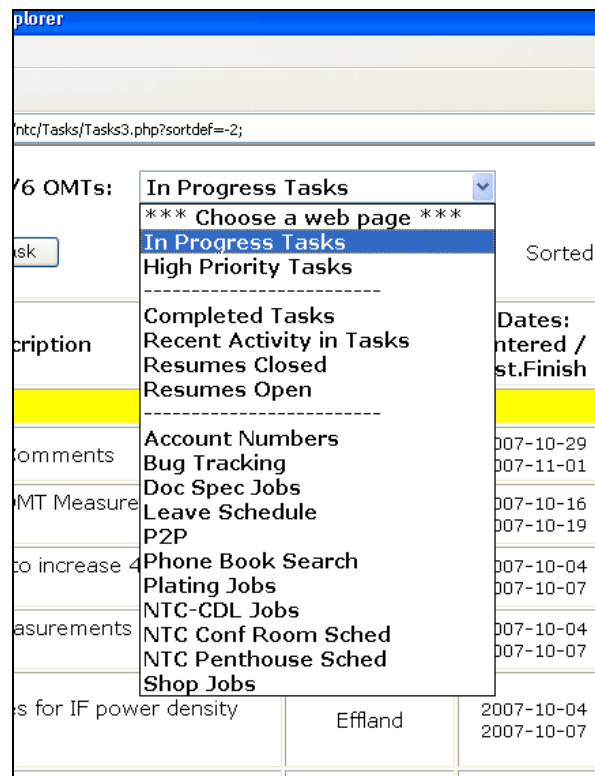
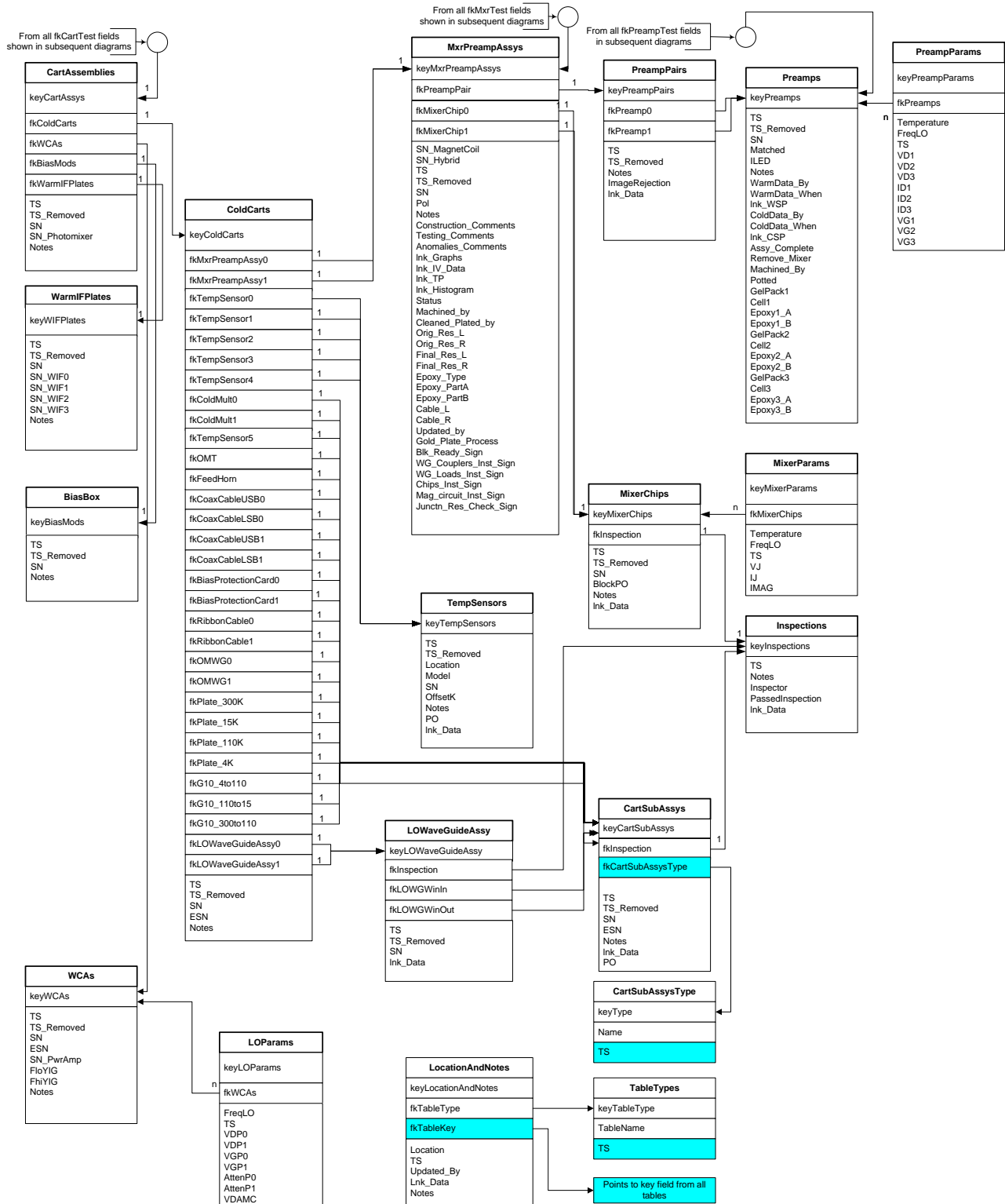


Figure 5: Database Schema Ver. 2.4



Ver 2.4 2008-06-06 jee Added PreampPair table. See notes for details.  
 Ver 2.3 2008-06-02 dn Added fields to Preamps  
 Ver 2.2 2008-05-30 jee Added fK OMIT to ColdCarts  
 Changed table "Location" to LocationAndNotes" and added more fields to that.  
 Ver 2.1 2008-05-23 jee added TS to TableTypes and CartSubAssysType  
 Ver:2

\\cvfiler.nrao.edu\cv-cdl-sis\Software\Documentation\Band6dbSchema2.4.vsd