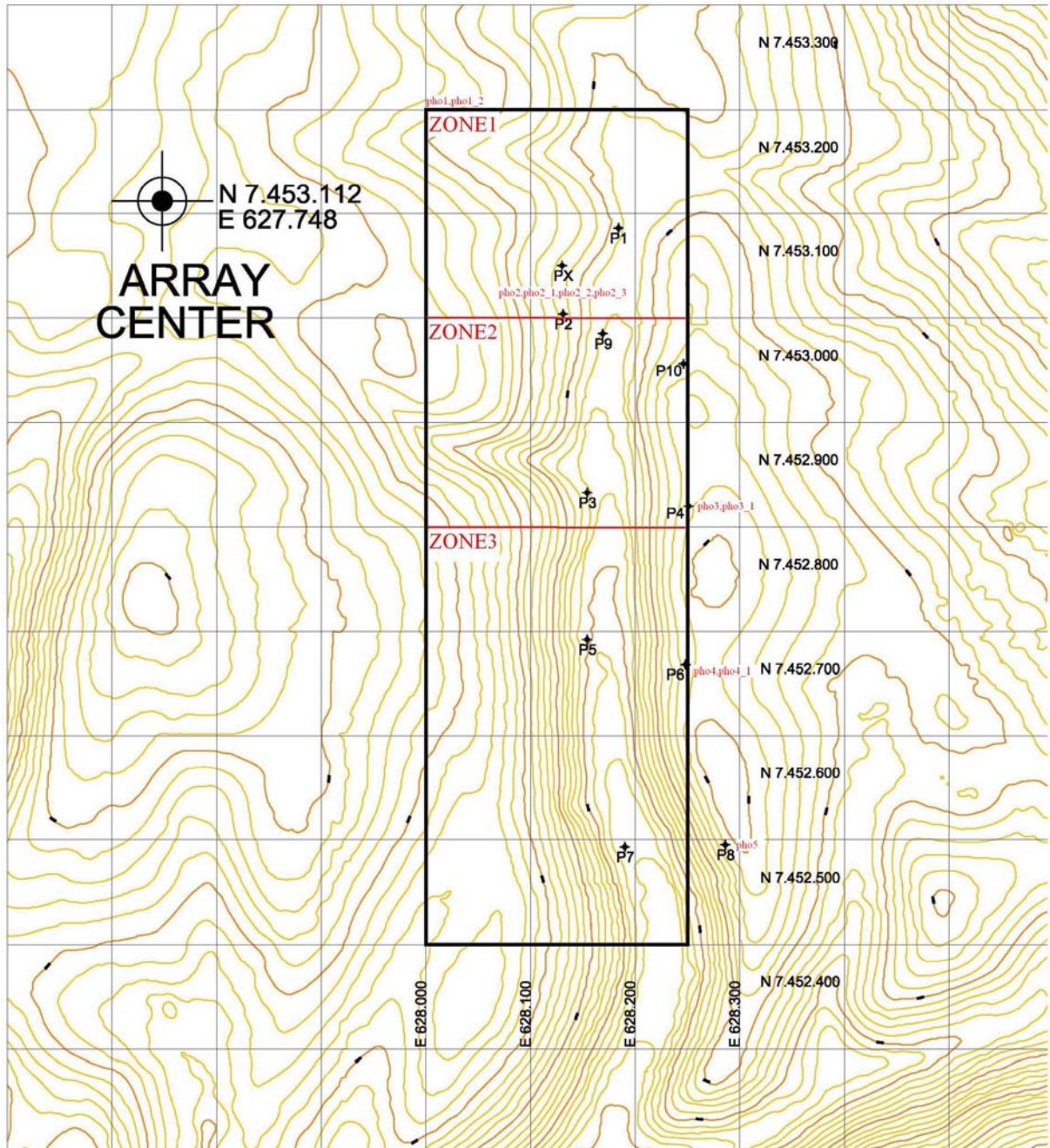


## Expedition to Quebrada

We explored the whole quebrada and the surrounding area. Here are our comments:

We include a map in pdf with the points where we were: P1, P2, PX, etc, and places where the photos were taken (pho1, pho2, etc), we divide the map in three zones (1,2 and 3) with different characteristics



## ZONE 1

We started in the north-west corner:

- The northern part of the quebrada between the point PX and the north border is not deep; it is flat area without signs of water or snow accumulation.

Picture pho1:

Taken in the north-west corner of the rectangle looking to the south-east.



Picture pho1

Picture pho1\_2:

Taken in the same position but looking straight along the quebrada (from north to south).



Picture pho1\_2

- **Point P2:** Is just a few meters away from the point PX (red star in John Conway's map), at this point the quebrada is just beginning and the slope is not steep.

Picture pho2:

Taken from P2 (looking to the east).

Truck in P9

Lars-Ake going to P10



Picture pho2

Pictures pho2\_1, pho2\_2 and pho2\_3:

Taken from P2. (Looking to the east).

Truck in P9

Lars-Ake on P10



Picture pho2\_1



Picture pho2\_2



Picture pho2\_3

## ZONE 2

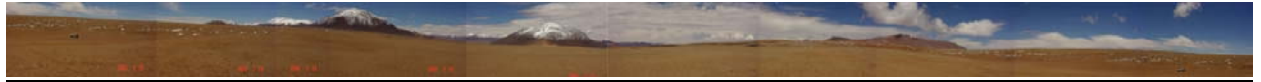
- **Point P3:** The slope is starting to become steeper and the quebrada is deeper.

### Picture pho3

Taken from P4 (east border of the rectangle, is a 360° photo)

Truck in P3

Lars-Ake in front of P4 on the other side of the quebrada (west)



Picture pho3

### Picture pho3\_1:

Taken from P4 (east border of the rectangle looking to the west)

Truck in P3

Lars-Ake in front of P4 at the other side of the quebrada (west)



Picture pho3\_1

The most important thing here is the detail in the picture **pho3\_1** where one you can see how the slope increases in the southern part of the quebrada and how the water (snow) flow from the highest part of the quebrada to the bottom through these small quebradas..

### **ZONE 3**

- **Point P5:** At this point the quebrada is really deep.

#### Picture pho4:

Taken from P6 (east border of the rectangle)

Truck on P5

Lars-Ake is in front of P6



Picture pho4

#### Picture pho4\_1:

Taken from P6 (east border of the rectangle)

Truck on P5

Lars-Ake is in front of P6 on the other side of the quebrada (west).



Picture pho4\_1

- **Point P7:** It's almost the same situation that the P5, the quebrada is very deep.

Picture pho5:

Taken from P8 (east border of the rectangle)

Truck on P7

Lars-Ake is in front of P8 on the other side of the quebrada (west)

You can see in **pho5** the entire quebrada (looking to north) and how the water flows along the bottom (south direction)



Picture pho5

## Conclusions:

In the north part of the quebrada (ZONE1 and ZONE2), from N7452800 to the north, it is possible to install antennas, the area is not really deep especially around the position that Conway is interested in (628130,7453050).

In ZONE2 the antennas can be placed inside the quebrada, which is quite shallow.

From N7452800 to the south (ZONE3) the antenna cannot be placed, because the quebrada is deep and there is evidence of water flow and snow accumulation.

If we can resume our exploration we can say:

ZONE1: OK

ZONE2: Possible inside the quebrada (not on the slopes)

ZONE3: Not recommended.

Lars-Åke Nyman  
Roberto Rivera M.