

# DT50

## Data Logger

# dataTaker®

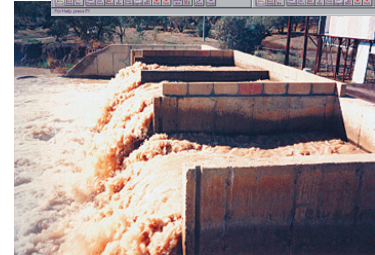
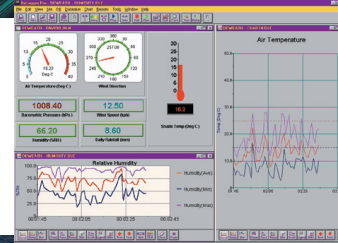
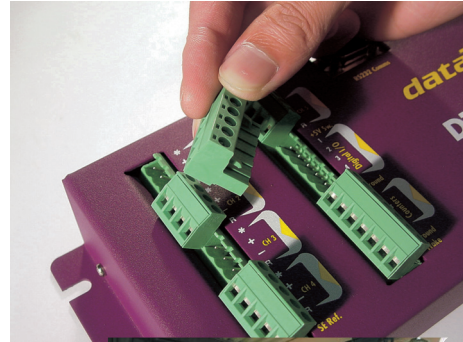
### Intelligent Data Logging Products

- General Purpose Low Cost, Low Power Data Logger
- 5-10 Sensor Channels, 8 Digital Channels
- Unique Universal Channels
- Up to 1,390,000 Data Points
- Stand Alone & Real Time Data Acquisition
- Remote Monitoring & Control
- Removable Screw Terminals

## The *dataTaker DT50* General Purpose Low Cost Unit

The *dataTaker DT50* is a general purpose low cost data logger. The *DT50* features 5 to 10 analog channels depending on sensor type, five digital input channels, 3 high speed counters and sampling speed of 25 - 70 samples per second.

Data can be conveniently and securely stored in battery backed RAM and removable PC cards; the latter providing storage for up to 1,390,000 data points. Alarms may be set for all channels. The *DT50's* rugged steel construction makes the unit suitable for harsh environments.



Specifications

### Applications include:

- Fault Finding
- Weather Stations
- Process Monitoring
- Building Monitoring
- Automotive Testing
- Flood Warnings
- Machine Down Time
- Strain Guages
- Temperature Profiling
- Research & Development
- Load Cells

**FREE  
Software &  
Technical  
Support**

## *dataTaker* software and Resource CD

The *dataTaker* Resource CD is provided FREE with every new logger. It contains software to enable easy setup, fast download, real time viewing of data and direct export to excel spreadsheets. The Resource CD also contains helpful training videos, manuals, application and technical notes and other valuable utilities.

DeLogger™ 4 Pro is the enhanced graphical package including additional automation, reporting, database and remote *dataTaker* management features.

For your nearest local Datataker distributor visit [www.datataker.com](http://www.datataker.com).

### Australasia

Datataker Pty Ltd  
7 Seismic Court  
Rowville Melbourne  
Victoria 3178

Tel: +61 3 9764 8600  
Fax: +61 3 9764 8997  
Email: [sales@datataker.com.au](mailto:sales@datataker.com.au)

### Europe

Grant Instruments (Cambridge) Ltd  
Shepreth  
Cambridgeshire  
SG8 6GB

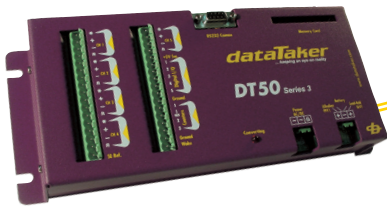
Tel: +44 (0) 1763 264780  
Fax: +44 (0) 1763 262410  
Email: [sales@datataker.co.uk](mailto:sales@datataker.co.uk)

### Americas

Computer Aided Solutions  
8588 Mayfield Rd, Suite One  
Chesterland, OH 44026

Tel: +1 800 9 LOGGER  
Tel: +1 440 729 2570  
Fax: +1 413 375 6137  
Email: [sales@computeraidedsolutions.com](mailto:sales@computeraidedsolutions.com)

[www.datataker.com](http://www.datataker.com)



## Analog Channels

### Channel Number

Number of input channels depends on sensor wiring configuration. Sensor configurations may be mixed:

- Two wire: 5
- Two wire with one shared terminal: 10
- Three wire: 5
- Four wire: 5
- 4-20mA current loop: 5 with shared common + with 10 external shunts

## Fundamental Input Ranges

The DT50 hardware measures voltage, current, resistance and frequency. From these, all other measurements are derived.

Full Scale	Resolution	Full Scale	Resolution
±25.00 mVdc	2.00 µV	50 Ω	.25 mΩ
±250.0 mVdc	20.00 µV	500 Ω	2.50 mΩ
±2.50 Vdc	200.00 µV	5,000 Ω	25.00 mΩ
±0.25 mA	0.20 µA	100 Hz	0.01 %
±2.50 mA	1.00 µA	10 Hz	0.01 %
±25.00 mA	10.00 µA		

## Accuracy

Measurement at	25°C	-45°C to 60°C
DC Voltage	0.15%	0.25%
DC Current	0.25%	0.35%
DC Resistance	0.20%	0.30%

### Sensor Excitation

Each channel: 4.5V (10k source), 250µA or 2.5mA switched on when channels is selected

DC Voltage: 5V at 100mA (max.) switched

### Multiplexer (Channel Selector)

Type: solid-state ±5V input ratings  
Input impedance: 1M or >100M, programmable  
Common mode range: ±3.5V

### Internal Channels

Temperature (thermocouple reference junction): 1  
Reference voltage channels: 1  
Internal battery voltage: 1

### Sampling

Sampling for accuracy and noise rejection by integrating over 50/60Hz line period.  
Maximum sample speed: 25Hz  
Effective resolution: 15 bits  
Linearity: 0.01%  
Common mode rejection 25mV range: >90dB  
Line (50/60Hz) series mode rejection: >35dB

## Sensor Support

Supports a wide range of sensors types including, but not limited to the following:

### Thermocouples

Types: B, C, D, E, G, J, K, N, R, S, T  
Reference junction compensation accuracy:

Case temperature	2.5°C	-20 to +60°C
Accuracy	±1.0°C	±1.5°C

### RTDs

Types: Pt, Ni, Cu  
Resistance range: 10Ω to 20k  
Measurement accuracy: 4 wire: 0.15% of resistance value  
3 wire: 0.25% of resistance value

### Thermistors

Types: YSI 400xx Series  
Resistance range: <7kΩ,  
<20kΩ with parallel resistor

### Monolithic Temperature Sensors

Types supported: LM335, LM34, LM35, AD590

### Bridge Sensors

Configurations: 4-wire and 6-wire  
Excitation: voltage or current  
Bridge completion: external or internal half bridge

### 4-20mA Current Loops

Shunt value: 100Ω to a shared common  
Accuracy: 0.25% at 25°C

### Sensors - Comments

A wide range of sensor scaling and linearising facilities are provided including polynomials, expressions and functions.

## Digital Channels

### Number of Channels

Bi-directional channels: 5  
Dedicated counter channels: 3

### Digital Input

Number: 5, shared with bi-directional channels  
Input Type: logic level (protected with pull-up)

### Counter Channels

Number: 5 low speed (10Hz) shared with bi-directional channels  
3 high speed (1kHz, sleep mode) with switchable internal clocking options  
Size: 16 bit (65535 counts)

### Digital Output

Number: 5  
Output type: open-collector npn transistor  
Rating: +30V, 100mA

## Calculation Channels

Any expression involving variables and functions including: sin(), cos(), tan(), asin(), acos(), atan(), abs(), sqrt(), average, maximum, minimum, time of max., time of min., variance, integral, histogram

## Scheduling of Data Acquisition

Number of schedules: 4 acquisition schedules  
Scan triggers: time base or digital event  
Conditional scanning: while digital input high  
Time based scheduling: from seconds to months in increments of 1 second, 1 minute, 1 hour and 1 day  
Maximum scheduled rate: 1 second or as fast as possible, typically 25 samples per second  
Dynamic scan time base change: yes  
Maximum number of channel entries: 110

## Alarms

Condition: high, low, within range and outside range  
Delay: optional time period for alarm response  
Actions: set digital outputs, execute any dataTaker commands. Alarms can be combined in a logical fashion.

## Data Storage

### Internal

Type: battery backed SRAM  
Capacity: 166,500 data points

### PC Card

Types: SRAM to 4MBytes, Type 1  
Card voltage: 5V types  
Capacity: up to 1,390,000 data points  
Data format: proprietary

### Download Data Format

Format: ASCII floating point, fixed point or exponential formats  
Compatibility: spreadsheets, word processors, graphing packages, statistical programs and SCADA software

## Serial Interface (RS232)

The DT50 is programmed and data extracted via the RS232 serial interface  
Speed: 300 to 9600 baud (9600 default)  
Handshake: XON and XOFF  
Wake from sleep: yes  
Isolation: 500V  
Compatibility: computers, modems, satellite-modems, radio-modems and printers

## System

Processor type: Z180, 18 MHz  
Program storage: FLASH  
Data storage: SRAM, battery backed  
Indicator LED: sampling

### Real Time Clock

For time stamping of data, scheduling and timers  
Normal resolution: 1 second  
Accuracy: 2 seconds per day (25°C)

### Power Supply

Voltage range: 11 to 24Vdc or 9 to 18Vac  
External battery input: 6V lead acid

### Power Consumption

In normal mode: 1W (2W with ext. battery charging)  
Sleeping: 2mW (350µA from 6V battery)  
Typical low power operation: 20mW

### Internal Backup Battery

For real time clock and internal data storage backup  
Type: 3V 1/2AA Lithium

## Physical and Environment

Construction: Powder coated fabricated steel  
Dimensions: 260 x 110 x 55mm (height 104mm with PC Card)

Weight: 1.5kg (2.5kg shipping)  
Environment temperature range: -45°C to 70°C  
Humidity: 85%, non-condensing

## Accessories Included

Comms cable: for PC RS232 and USB adapter  
Resource CD which includes standard software  
Manuals: "Getting Started with dataTaker"  
"User's Manual"

Line adaptor: 110/240Vac, 500mA

## Optional Accessories

### Battery (Recommended)

A battery can be connected for stand alone data logging. The battery can be re-charged by the DT50 when main supply is restored/applied.

Chemistry: lead acid gel cell  
Voltage: 6V  
Maximum charge current: 200mA  
Temperature compensation charging: -10°C to +70°C

### External Battery (GC-4)

Capacity: 4Ahr  
for mounting external to the DT50

Normal: approx. 24 hours  
Low power: approx. 12 months

### Internal Battery (BATOPTION)

0.5Ahr (Lead Acid) - factory fitted  
Normal: approx. 3 hours  
Low power: approx. 1 months

### Portable Carrying Case (PE500)

Capacity: 1 DT50 unit + battery  
Environmental protection: IP66

### SRAM PC Card (MC1024P, MC4096P)

Capacity: 1MByte, approximately 340,000 data points  
4MByte, approximately 1,390,000 data points

### DeLogger™ 4 Pro

Graphical programming and supervision software. Supports a large network of DT50, DT500 and DT800 range units connected via modem. Features include comprehensive plotting, reporting, mimics, database, web publishing and other powerful capabilities.

**dataTaker®**

Your local distributor



**Warranty:** The dataTaker DT50 is covered by a 3 year warranty on workmanship and parts. For further information on the dataTaker range, or for useful downloads, visit the Datataker web site at [www.datataker.com](http://www.datataker.com) or contact your nearest Datataker office or distributor.

**Quality Statement:** Datataker operates a Quality Management System complying with ISO9001:2000. It is Datataker's policy to supply customers with products which are fit for their intended purpose, safe in use, perform reliably to published specification and are backed by a fast and efficient customer support service.

**Trademarks:** dataTaker is a registered trademark of Datataker Pty Ltd.

**Specifications:** Datataker Pty Ltd reserves the right to change product specifications at any time without notice.  
**Manufactured and designed in Australia.**

[www.datataker.com](http://www.datataker.com)